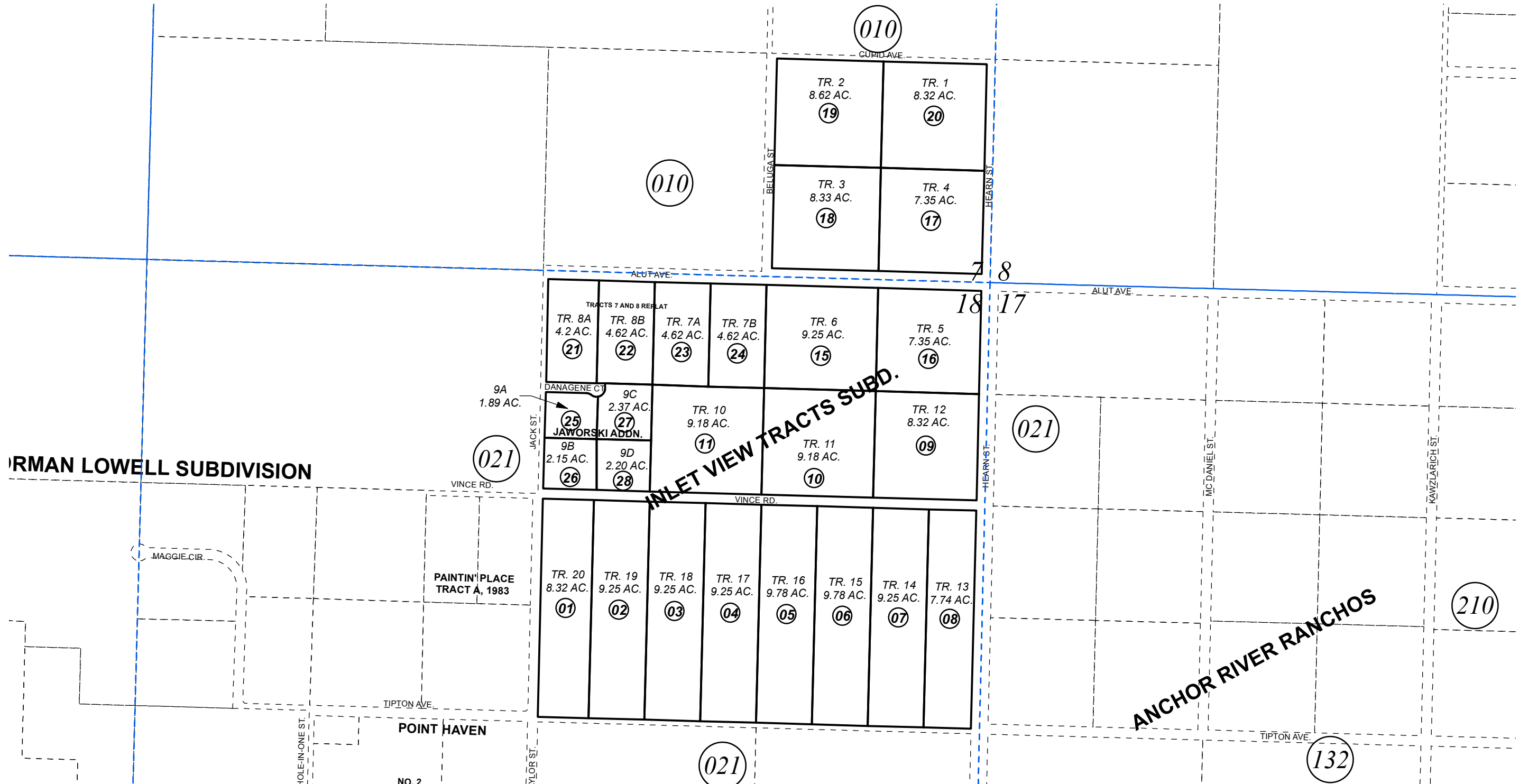


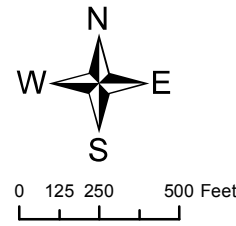
SE1/4 SE1/4 SEC. 7 & NE1/4 SEC. 18, T05S, R14W, S.M.

171-270



AUGUST 8, 2016

For 2017 assessment roll		
Delete	Add	Revise
To		
12	25-28	



Assessor's Map
Kenai Peninsula Borough

INLET VIEW TRACTS SUB HM0740698
 INLET VIEW TRACTS 7 AND 8 REPLAT HM0970050
 INLET VIEW TRACTS SUB JAWORSKI ADDITION HM2016011

This map is prepared for Kenai Peninsula Borough Assessing Dept. use only and is not intended for conveyance nor is it a survey.
 Note- Assessor's block Numbers Shown in Ellipses
 Assessor's Parcel Numbers Shown in Circles