

POR. SECS. 26, 35, 36, T4S, R14W, SEWARD MERIDIAN

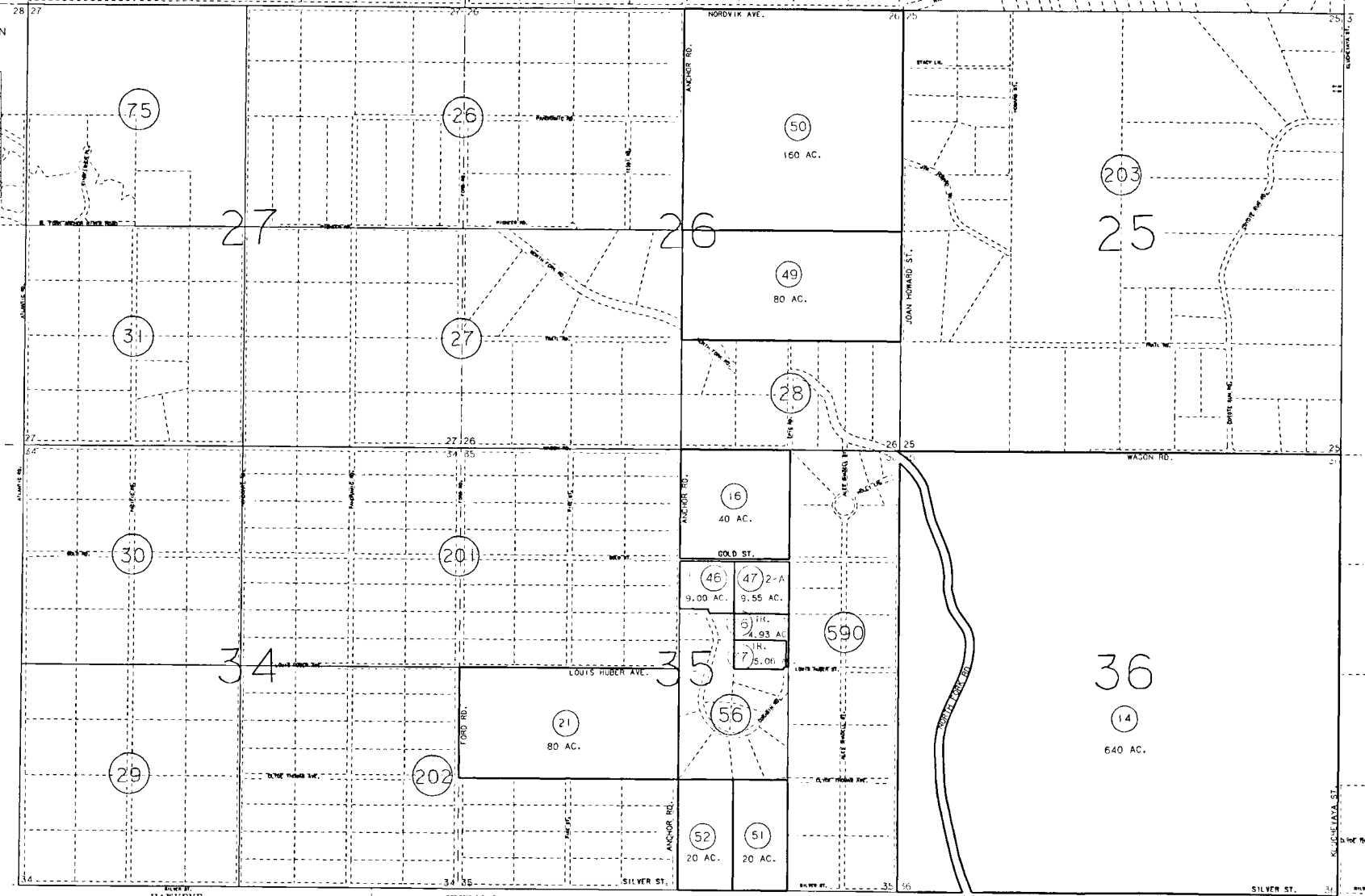
165-200

THIS MAP IS PREPARED FOR KENAI PENINSULA BOROUGH ASSESSING DEPT. USE ONLY AND IS NOT INTENDED FOR ANY OTHER USE OR REPRESENTATION

DATE: DEC. 27, 1993

FOR 1994 ASSESSMENT ROLL

DELETE	ADD	REVISED
TO		
41,42,55,59-75,		
78-91 TO PG 203		



DRAWN BY  
 HAWKEYE  
 THOMAS SIMMONS  
 THOMAS SIMMONS NO. 2  
 LESHAR, WILLIAM A.  
 HM770047  
 HM700012  
 HM810076  
 HM890010W

NOTE - Assessor's Block Numbers Shown In Ellipses  
 Assessor's Parcel Numbers Shown In Circles

Assessor's Map  
 Kenai Peninsula Borough