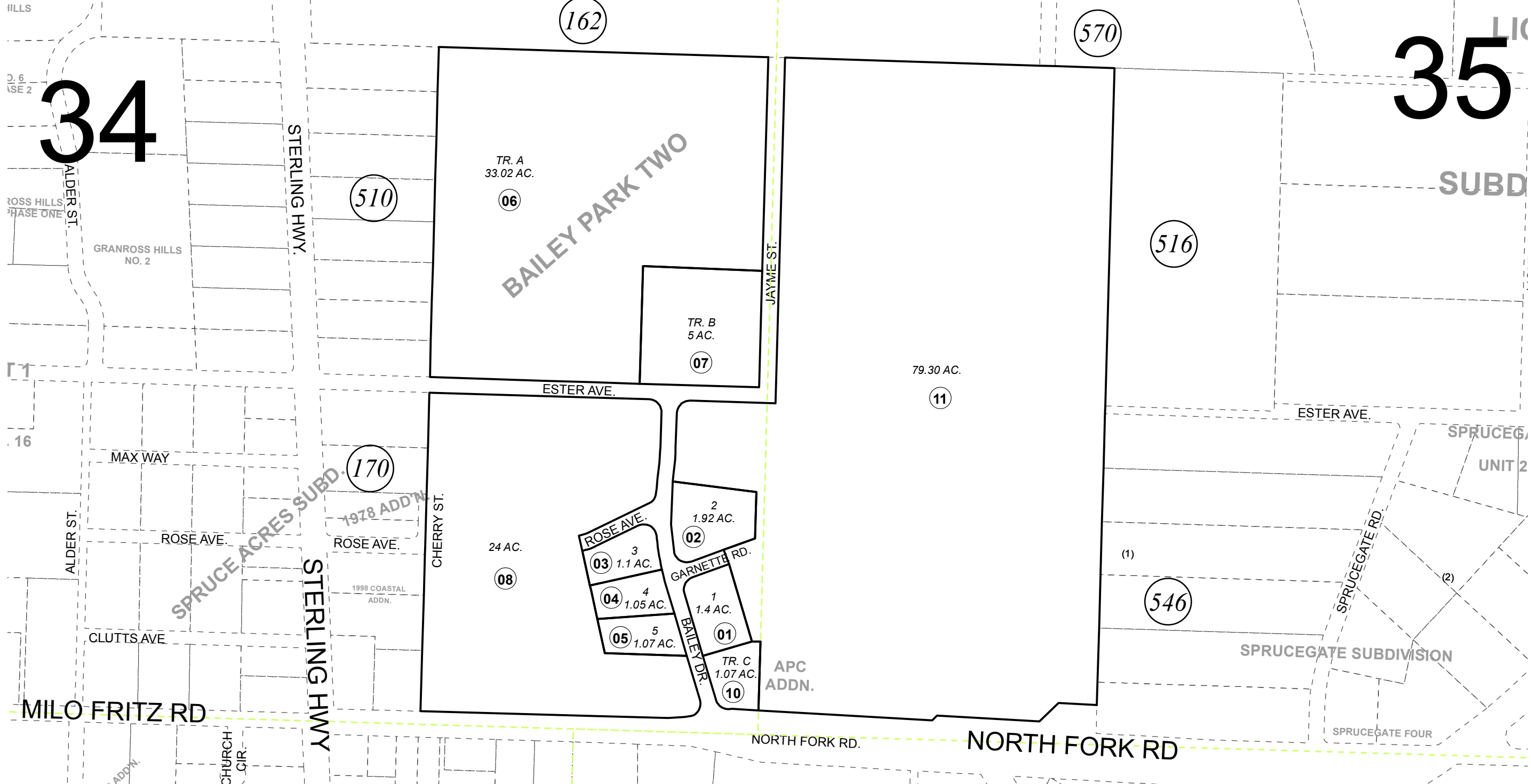


E 1/2 SE 1/4 SEC. 34 & W 1/2 SW 1/4 SEC. 35, T04S, R15W, S.M.

165-720



34

35

JANUARY 4, 2017

For 2011 assessment roll		
Delete	Add	Revise
To		
		11
(ACRERAGE CHANGE)		



0 100 200 400 Feet

Assessor's Map  
Kenai Peninsula Borough

BAILEY PARK SUB HM0810066  
BAILEY PARK TWO HM0850018  
BAILEY PARK SUB APC ADDN HM2010068

This map is prepared for Kenai Peninsula Borough Assessing Dept. use only and is not intended for conveyance nor is it a survey.  
Note- Assessor's block Numbers Shown in Elipses  
Assessor's Parcel Numbers Shown in Circles