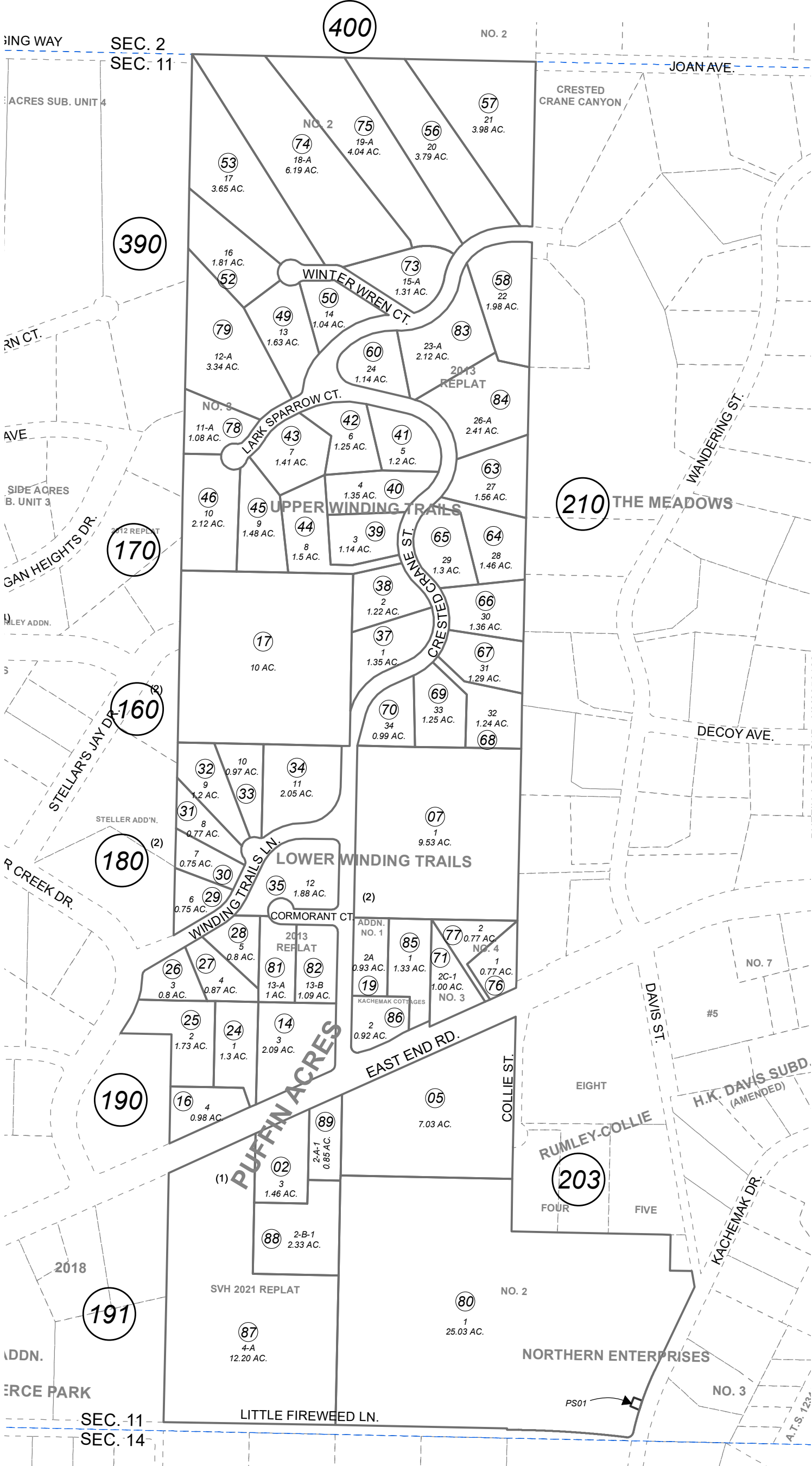


174-192

E1/2 W1/2 SEC. 11, T06S, R13W, S.M.

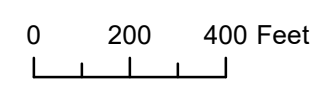


- PUFFIN ACRES SUB HM0850122
- PUFFIN ACRES SUB ADDN NO 1 HM0910010
- PUFFIN ACRES NO 2 HM0950052
- UPPER WINDING TRAILS HM0990038
- LOWER WINDING TRAILS HM0990044
- PUFFIN ACRES NO 3 HM2003071
- UPPER WINDING TRAILS NO 2 HM2005099
- PUFFIN ACRES NO 4 HM2008050
- UPPER WINDING TRAILS NO 3 HM2009041
- NORTHERN ENTERPRISES NO 2 HM2012054
- LOWER WINDING TRAILS 2013 REPLAT HM2014013
- UPPER WINDING TRAILS 2013 REPLAT HM2015006
- PUFFIN ACRES KACHEMAK COTTAGES HM2019018
- PUFFIN ACRES SVH 2021 REPLAT HM2021033

This map is prepared for Kenai Peninsula Borough Assessing Dept. use only and is not intended for conveyance nor is it a survey.

Note- Assessor's block Numbers Shown in Ellipses
Assessor's Parcel Numbers Shown in Circles

Assessor's Map
Kenai Peninsula Borough



SEPTEMBER 21, 2021	
For 2022 assessment roll	
Delete	Revise
To	
01, 22,	87-89
23	