

172-240

W 1/2 N 1/4 SEC. 23, T05S, R12W, S.M.

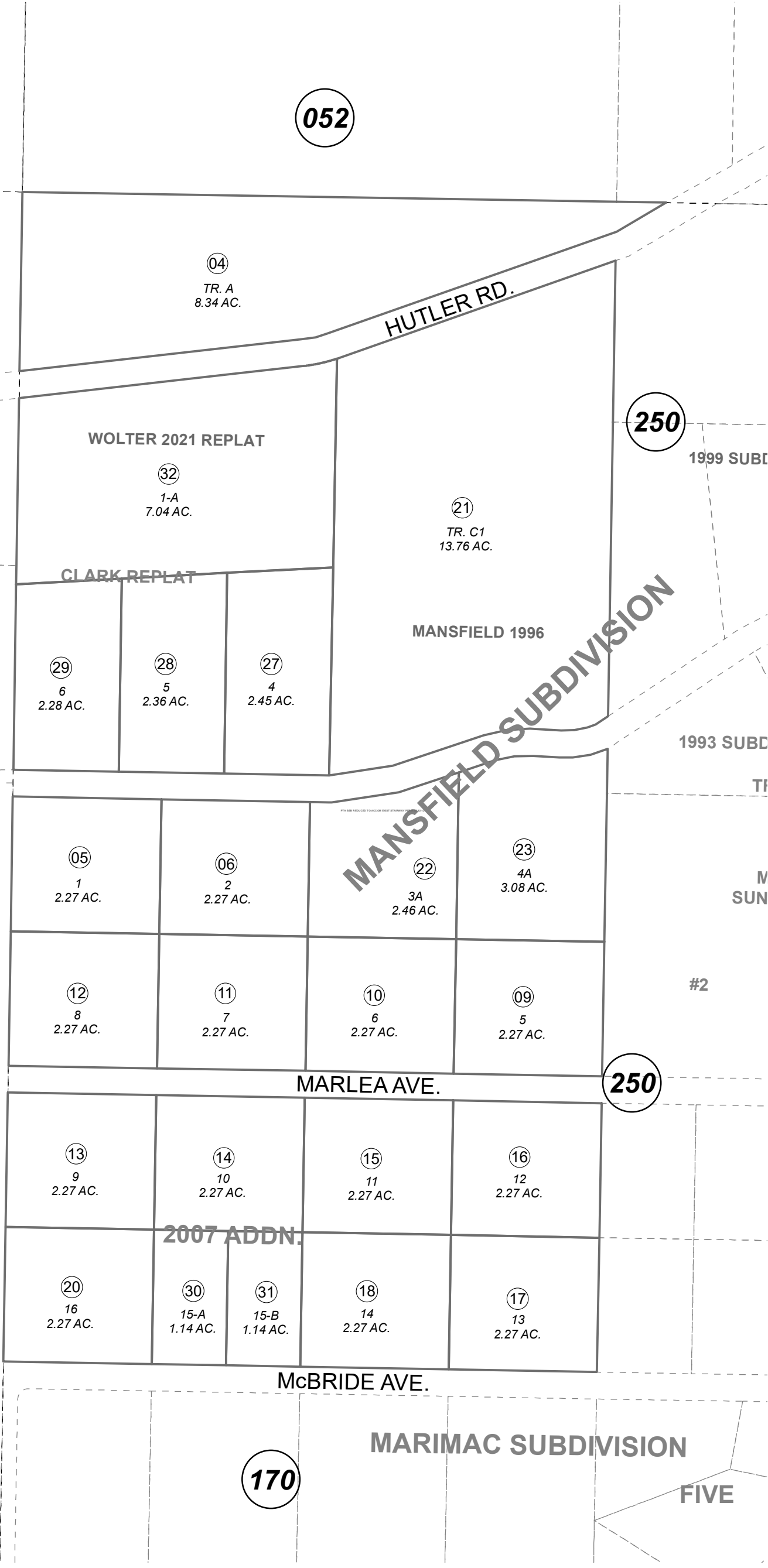
052

051

170

250

250



This map is prepared for Kenal Peninsula Borough Assessing Dept. use only and is not intended for conveyance nor is it a survey.

Note- Assessor's block Numbers Shown in Ellipses Assessor's Parcel Numbers Shown in Circles

- MANSFIELD SUB HM0780094
- MANSFIELD 1983 SUB OF TR H HM0850086
- MANSFIELD 1983 SUB OF TRACT H HM0850086
- MANSFIELD 1996 HM0960057
- MANSFIELD SUB CLARK REPLAT HM2007090
- MANSFIELD SUB 2007 ADDN HM2008025
- MANSFIELD SUB WOLTER 2021 REPLAT HM2021063

Assessor's Map Kenal Peninsula Borough



0 50 100 200 Feet

JANUARY 5, 2022	
For 2022 assessment roll	
Delete	Add
	Revise
To	24-26 32