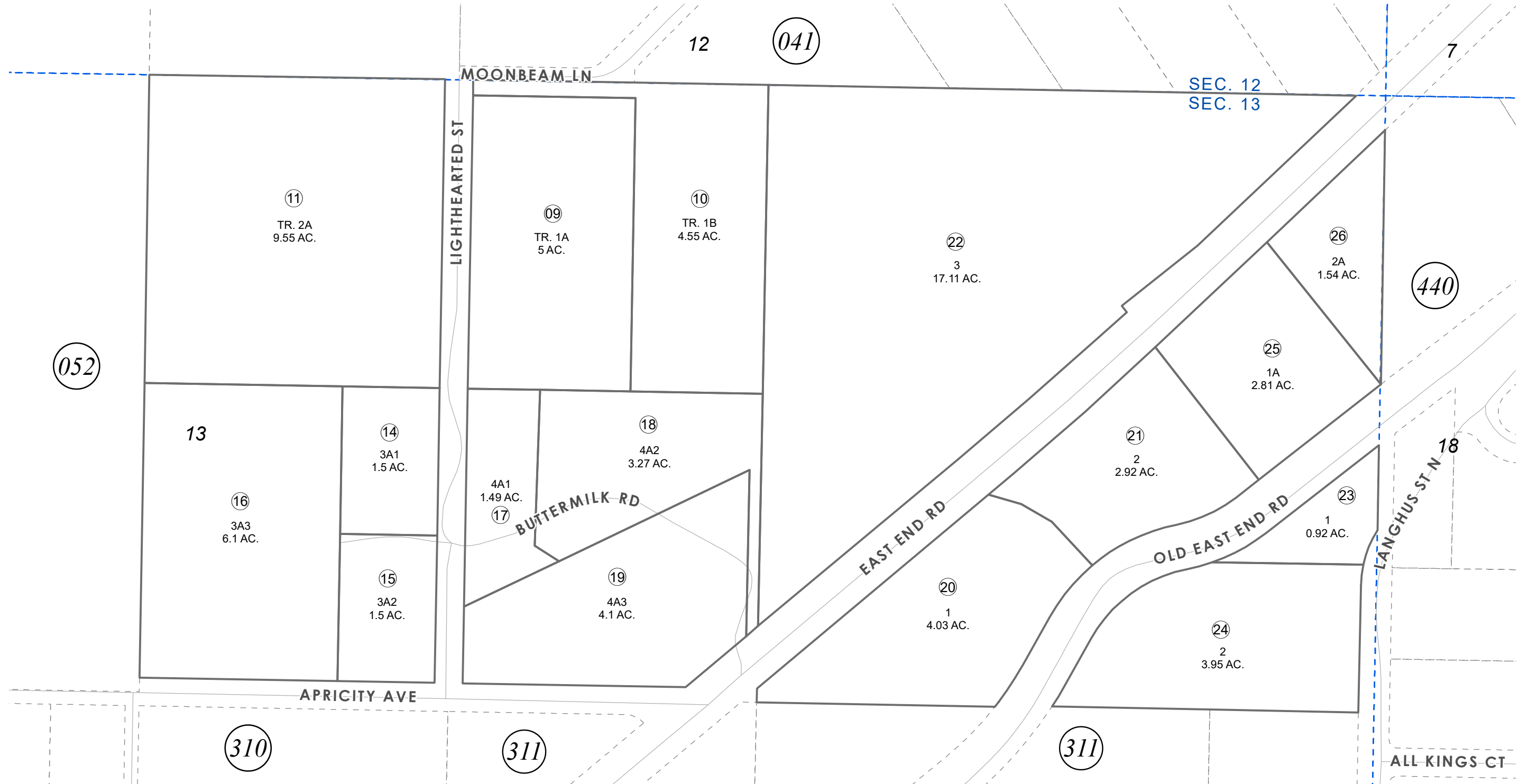


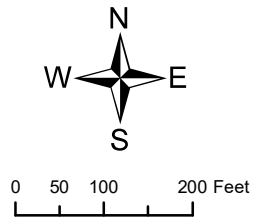
N1/2 NE1/4 SEC. 13, T05S, R12W, S.M.

172-420



OCTOBER 25, 2023

For 2024 assessment roll		
Delete	Add	Revise
	To	
06,07	25,26	



Assessor's Map  
Kenai Peninsula Borough

BAYWOOD SUB HM0810027  
 BUTTERMILK MEADOWS TWO HM0830105  
 BUTTERMILK MEADOWS THREE HM0910064  
 LONEWOLF SUB HM0950039  
 OVER THE EDGE HM2020011  
 BAYWOOD 2022 HM2023033

This map is prepared for Kenai Peninsula Borough Assessing Dept. use only and is not intended for conveyance nor is it a survey.  
 Note- Assessor's block Numbers Shown in Ellipses  
 Assessor's Parcel Numbers Shown in Circles