

PORTION SECTION 24, T4N, R1W, SEWARD MERIDIAN 15

125-140

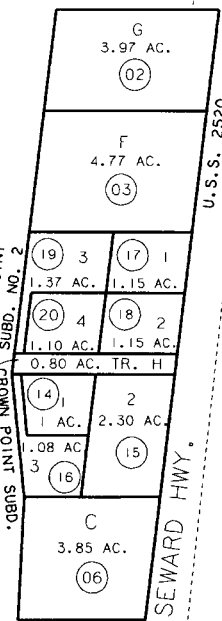
USS 2915 PORTION LOT H SW000034  
 PTARMIGAN LAKE SUBD. SW750003  
 USS 2520 CROWN POINT SW820018  
 USS 2520 CROWN POINT SW830012  
 PTARMIGAN LAKE REPLAT & ROW VAC SW920017  
 66' ROW (SOLAR MTN. RD.) RES. SN8801

322

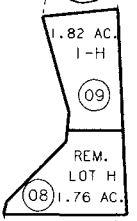
TRAIL RIVER

24

CROWN POINT SUBD. NO. 2  
 CROWN POINT SUBD.  
 OF TRACT D

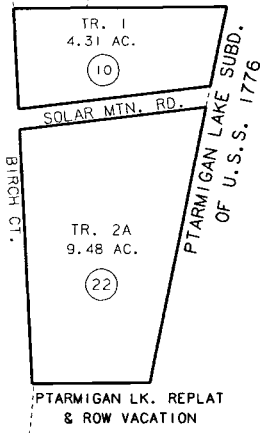


13



141

ALASKA RAILROAD  
 BIRCH CT.



322



DATE: FEB. 22, 1994

FOR 19 95 ASSESSMENT ROLL
DELETE ADD REVISED
TO
REVISED PAGE REF.

NOTE - Assessor's Block Numbers Shown In Ellipses  
 Assessor's Parcel Numbers Shown In Circles

Assessor's Map  
 Kenai Peninsula Borough

THIS MAP IS PREPARED FOR KENAI PENINSULA BOROUGH ASSESSING DEPT. USE ONLY AND IS NOT INTENDED FOR ANY OTHER USE OR REPRESENTATION