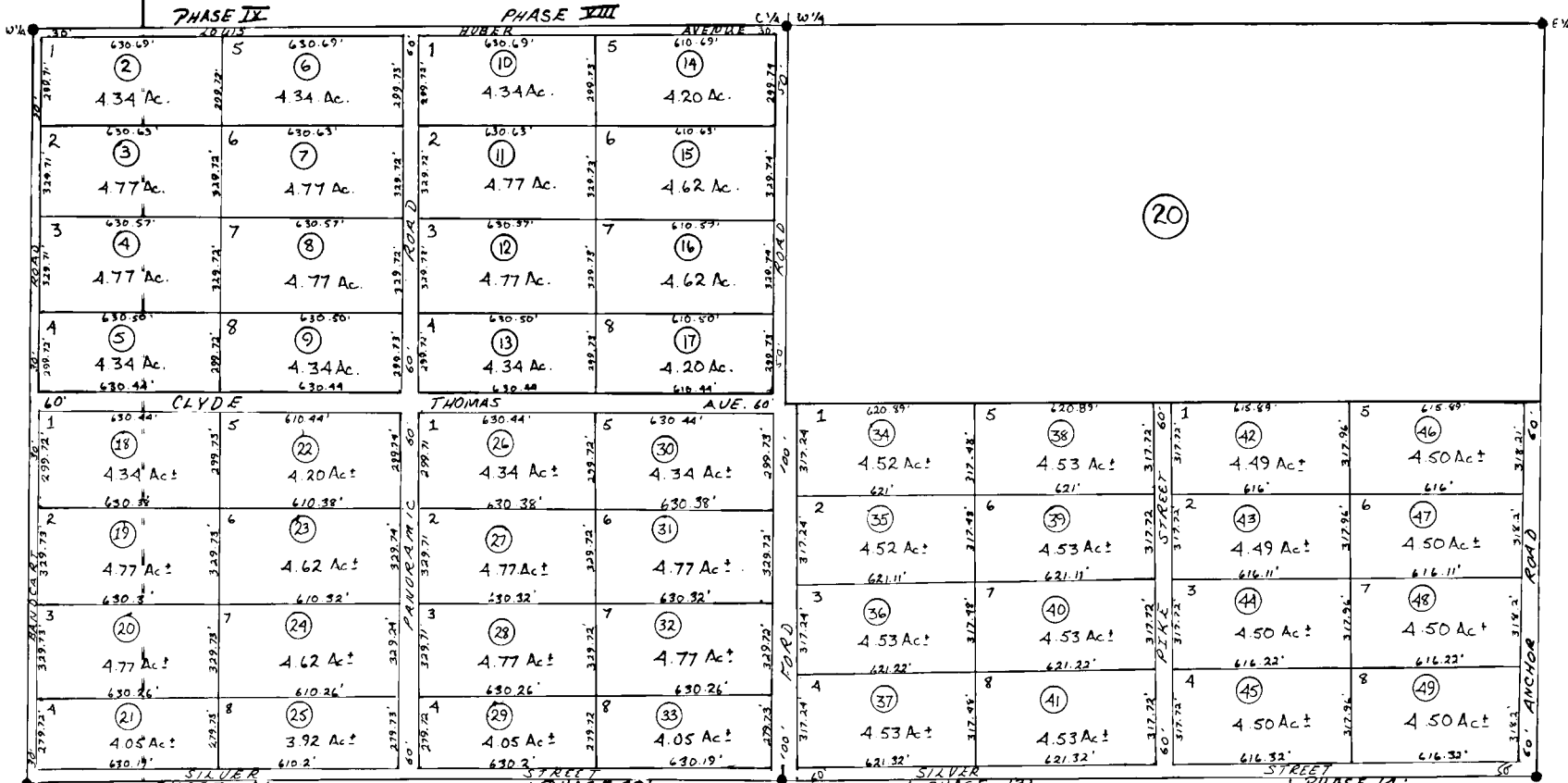


T4S, R14W, S.M., SE 1/4 Sec.34 & SW 1/4 Sec.35



- ROYAL HIGHLANDS PHASE 9 (H-83-124) AMENDED H84-22
- " " PHASE 10 (H-83-125) " H84-23
- ROYAL HIGHLANDS PHASE 11 (H-84-1)
- ROYAL HIGHLANDS PHASE 12 (H-84-2)
- ROYAL HIGHLANDS PHASE 13 (H-84-12)
- ROYAL HIGHLANDS PHASE 14 (H-84-13)

Assessor's Map
Kenai Peninsula Borough, Alaska

NOTE - Assessor's Block Numbers Shown in Ellipses
Assessor's Parcel Numbers Shown in Circles