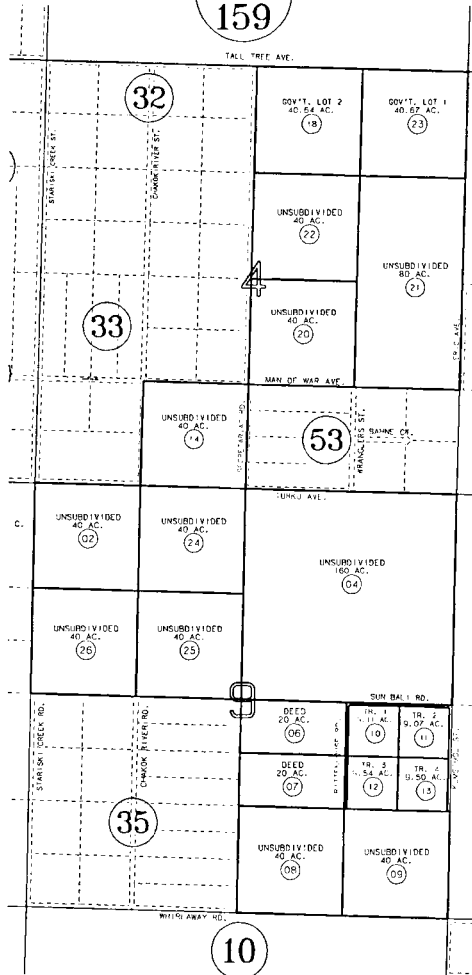


BK  
159



022

3

10



DATE: OCT. 7, 1993

FOR 1994 ASSESSMENT ROLL		
DELETE	ADD	REVISED
TO		
REVISED PAGE		

NOTE - Assessor's Block Numbers Shown in Ellipses  
Assessor's Parcel Numbers Shown in Circles

Assessor's Map  
Kenai Peninsula Borough

RITTENHOUSE TRACTS

HM750006

THIS MAP IS PREPARED  
FOR KENAI PENINSULA  
BOROUGH ASSESSING DEPT.  
USE ONLY AND IS NOT  
INTENDED FOR ANY  
OTHER USE OR REPRESENTATION