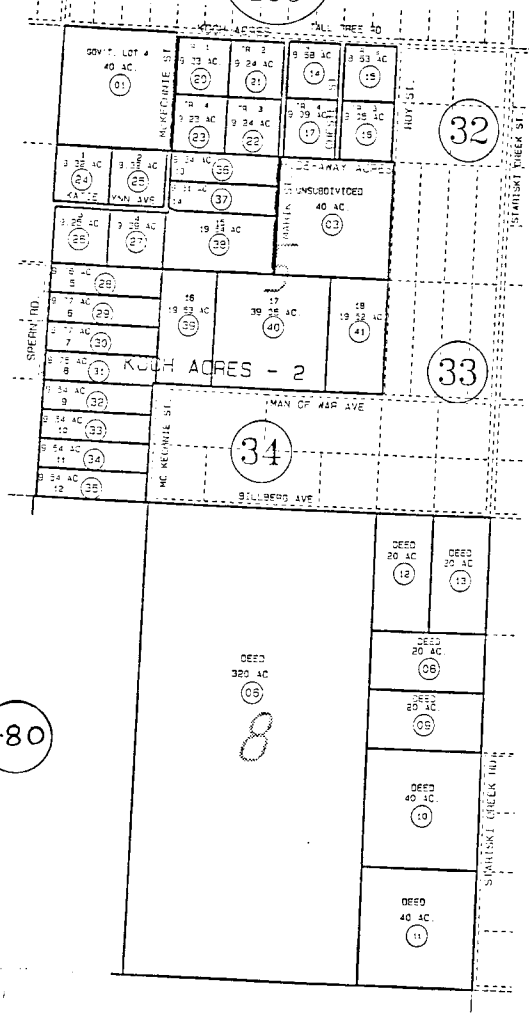


SEC. 5,8, T4S, R14W, SEWARD MERIDIAN

165-022

BK
159



021

023

480

10

DATE NOV 13, 2002

FOR 2003 ASSESSMENT ROLL

DELETE ADD REVISED

5 TO 165480+

HIDE-AWAY ACRES HM700083
 KOCH ACRES HM930054
 KOCH ACRES-2 HM950014

Assessor's Map
 Kenai Peninsula Borough

THIS MAP IS PREPARED FOR KENAI PENINSULA BOROUGH ASSESSING DEPT. USE ONLY AND IS NOT INTENDED FOR ANY OTHER USE OR REPRESENTATION

NOTE - Assessor's Block Numbers Shown In Ellipses
 Assessor's Parcel Numbers Shown In Circles