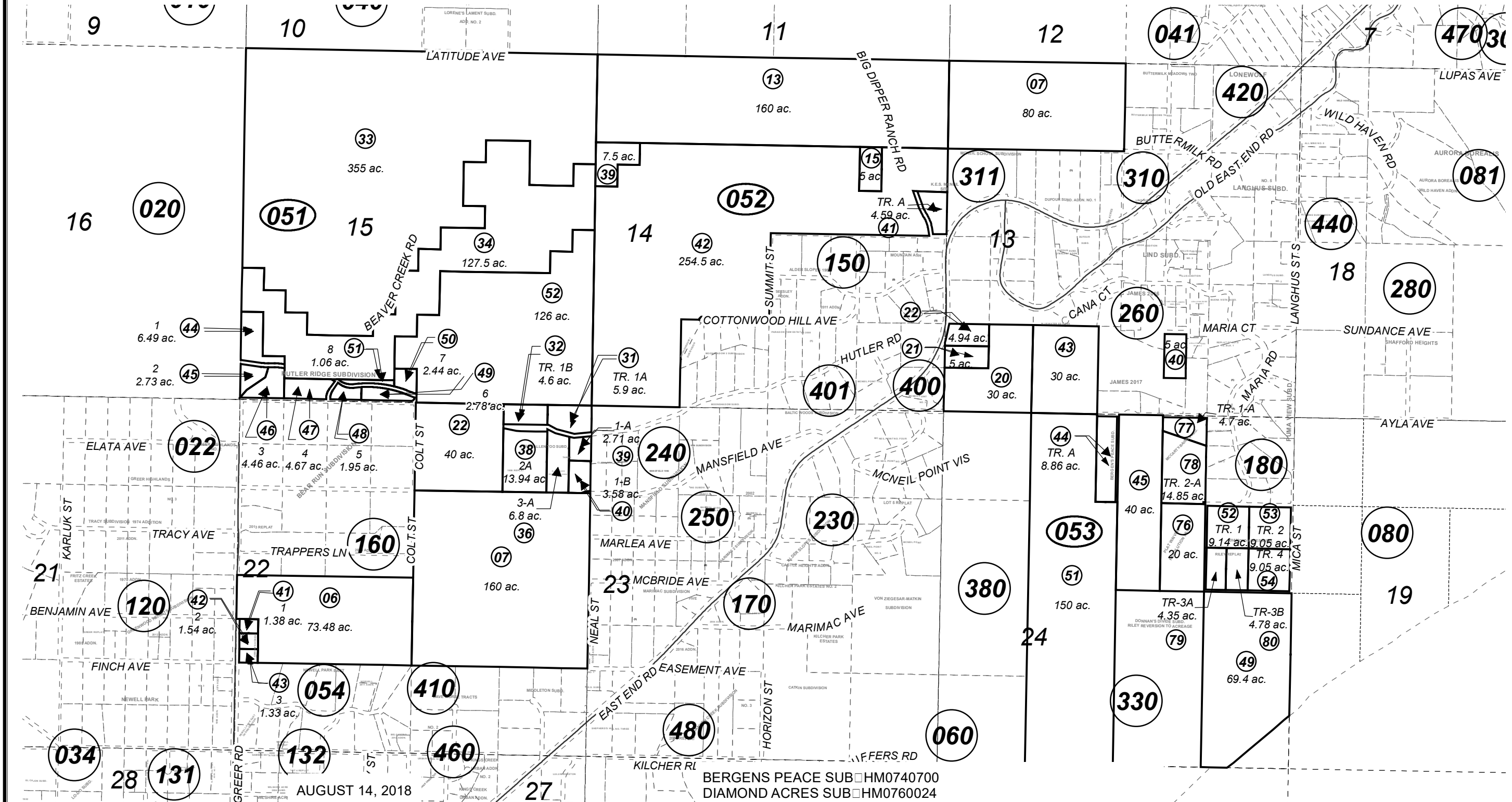


SEC. 13-15 & 22-24, T05S, R12W, S.M.

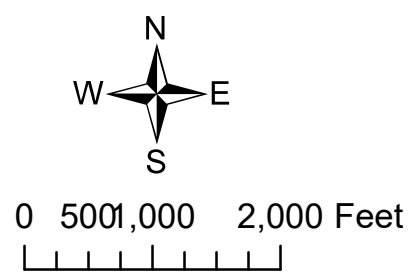
172-050



| | | |
|--------------------------|---------|--------|
| For 2019 assessment roll | | |
| Delete | Add | Revise |
| To | | |
| 05342 | 172310+ | |

- BERGENS PEACE SUB HM0740700
- DIAMOND ACRES SUB HM0760024
- BLUE ALLEN TOO SUB HM0790133
- BLUE ALLEN 1999 REPLAT HM2000059
- KES MCNEIL SITE HM2002064
- BLUE ALLEN THREE SUB HM2003093
- GIBSONS ACRES SUB HM2007063
- MCCARTY-BAIRD SUB HM2007118
- COTTONWOOD HILL AVE & JOEL ST ROW DEDICATION HM2008080
- HUTLER RIDGE SUB HM2009026
- DIAMOND ACRES RILEY REPLAT HM2016028

Assessor's Map
Kenai Peninsula Borough



This map is prepared for Kenai Peninsula Borough Assessing Dept. use only and is not intended for conveyance nor is it a survey.
Note- Assessor's block Numbers Shown in Ellipses
Assessor's Parcel Numbers Shown in Circles