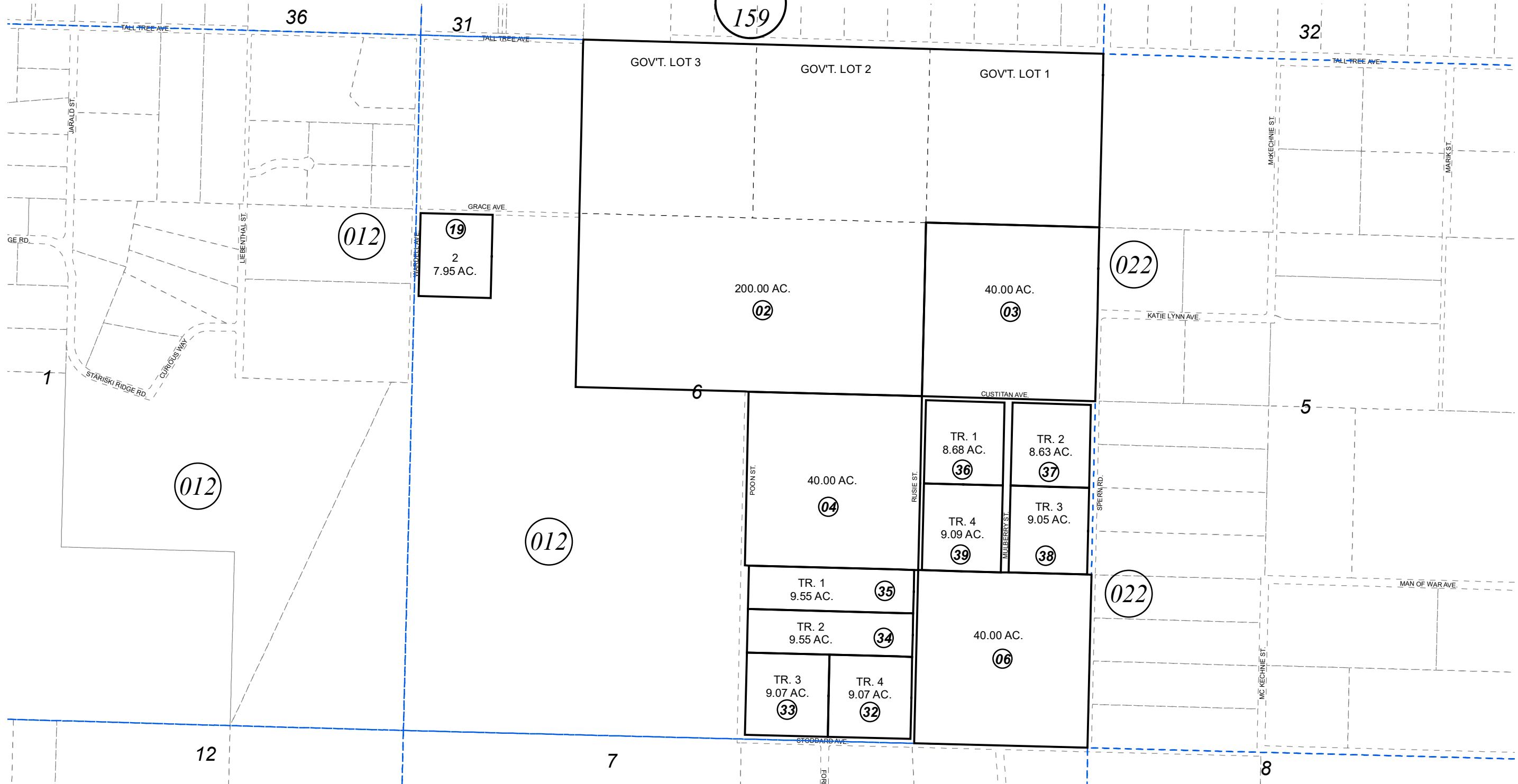


SEC. 6, T04S, R14W, S.M.

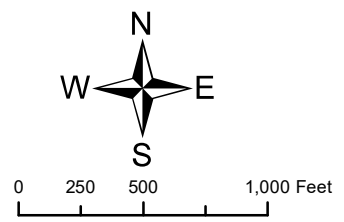
BK
159

165-021



AUGUST 27, 2019

For 2020 assessment roll		
Delete	Add	Revise
To		
10-18		
20-29	165012+	



Assessor's Map
Kenai Peninsula Borough

HM0760099 STARISKI ESTATES
HM0780082 MULBERRY ACRES SUB
HM0780084 WINNBURG HEIGHTS SUB

480

This map is prepared for Kenai Peninsula Borough Assessing Dept. use only and is not intended for conveyance nor is it a survey.
Note- Assessor's block Numbers Shown in Elipses
Assessor's Parcel Numbers Shown in Circles