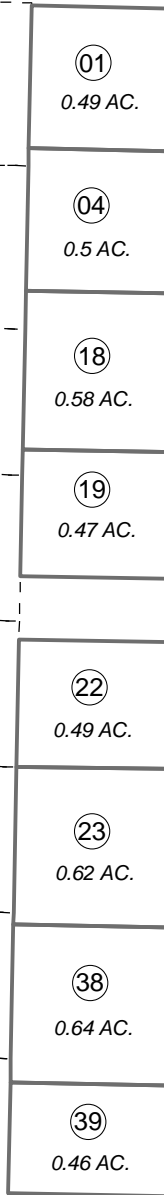


S 1/2 SE 1/4, SEC. 14, T06N, R12W, S.M.

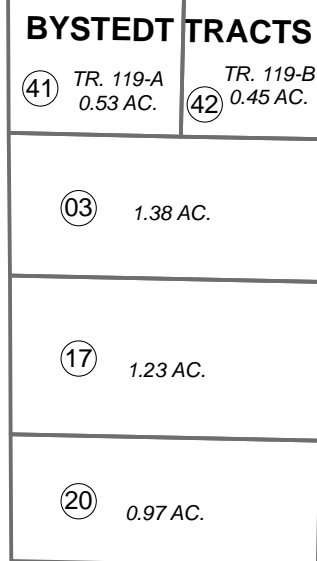
017-170

KILARNEY AVE

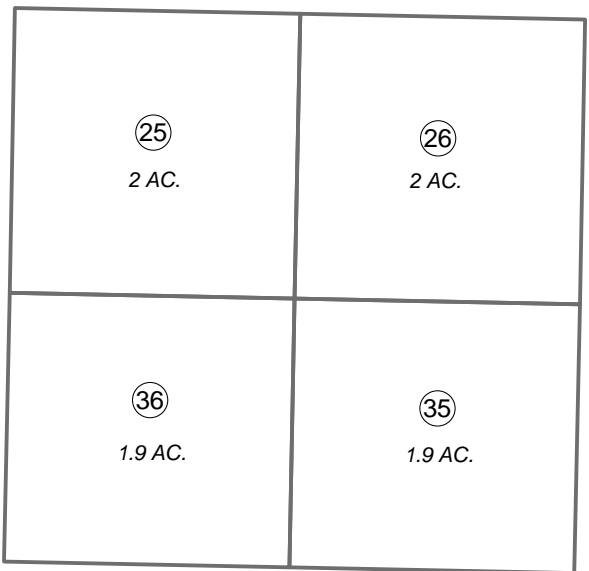
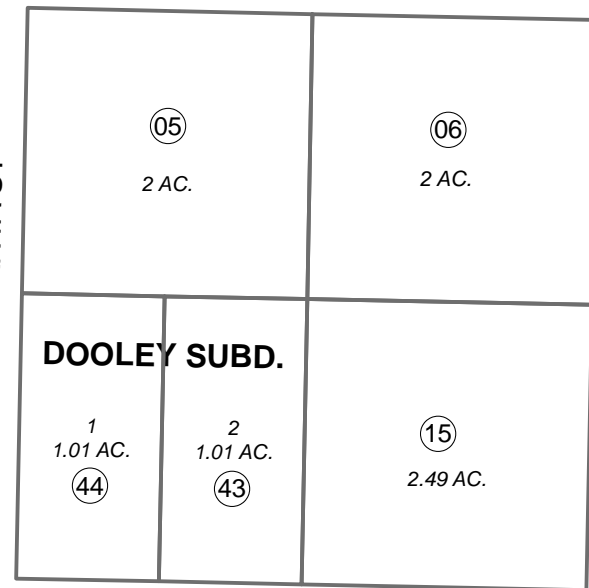
BYSTEDT AVE



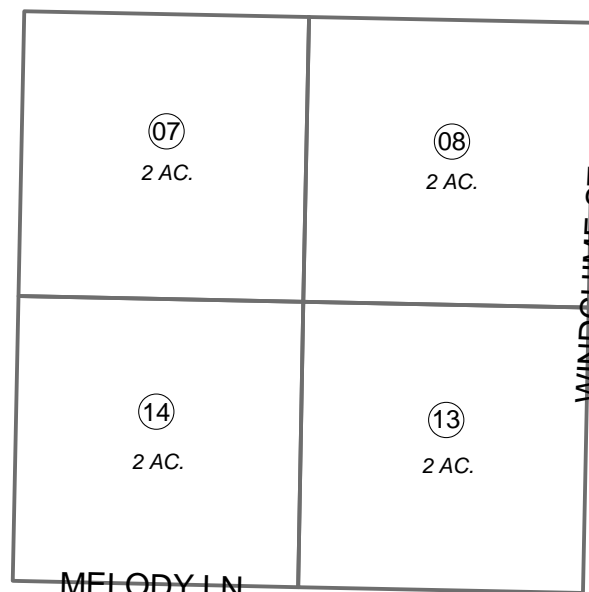
KENAI SPUR HWY



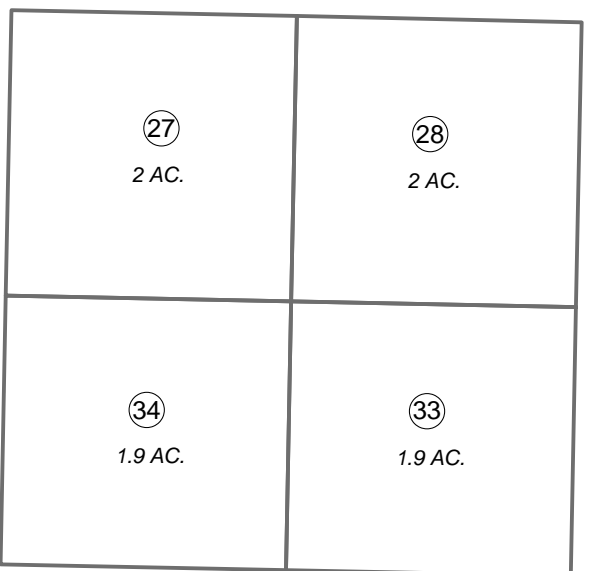
BANTA ST



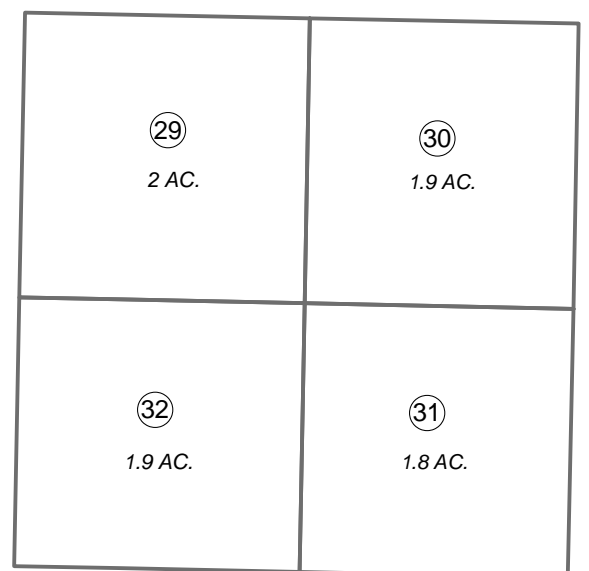
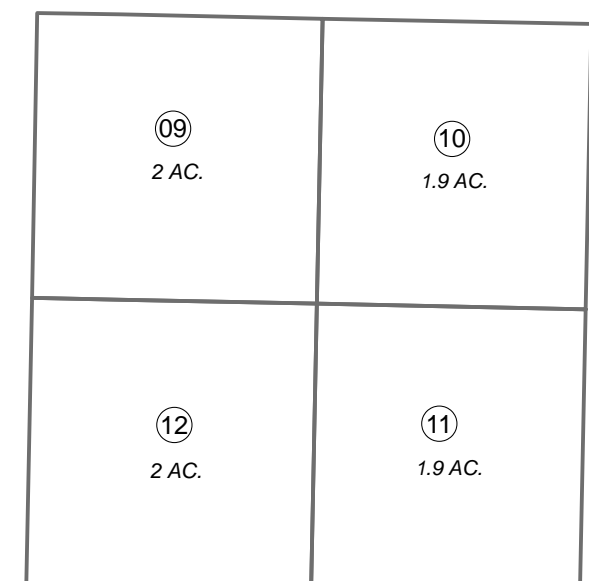
GALANKIN ST



MELODY LN



WINDCHIME ST



SAM ST

111

(5)

160

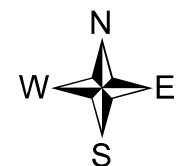
200

180

PANORAMA AVE

FEBRUARY 12, 2014

For 2014 assessment roll		
Delete	Add	Revise
To		15
(ACREAGE CHANGE)		



0 50 100 200 Feet

Assessor's Map  
Kenai Peninsula Borough

BYSTEDT TRACTS KN0790134  
DOOLEY SUB KN0870005  
SERVICE SUB KN0950051  
RECORD OF SURVEY KN2013025

This map is prepared for Kenai Peninsula Borough Assessing Dept. use only and is not intended for conveyance nor is it a survey.

Note- Assessor's block Numbers Shown in Ellipses  
Assessor's Parcel Numbers Shown in Circles