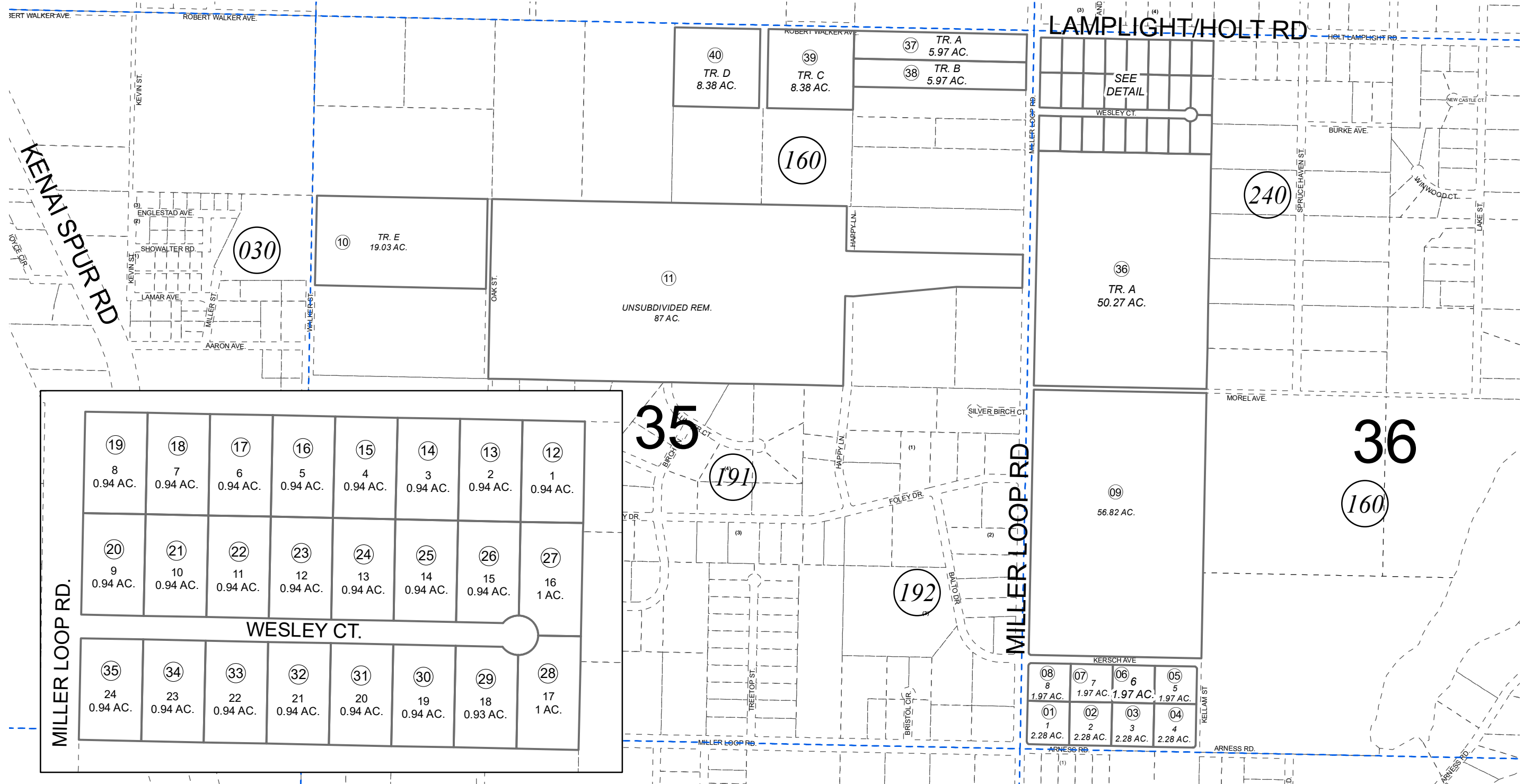


POR. S1/2 N1/2 SEC. 35 & W1/4 SEC. 36, T07N, R12W, S.M.

015-161



JANUARY 17, 2023

For 2022 assessment roll		
Delete	Add	Revise
	To	
16013	37-40	



0 150 300 600 Feet

Assessor's Map
Kenai Peninsula Borough

BIRCH GROVE ESTATES KN2007056
HEATHERWOOD ESTATES SUB NUMBER THREE KN2010018
MILLERS CROSSING SUB PHASE 1 KN2014057
LOBDELL SUB KN2022084

This map is prepared for Kenai Peninsula Borough Assessing Dept. use only and is not intended for conveyance nor is it a survey.
Note- Assessor's block Numbers Shown in Ellipses
Assessor's Parcel Numbers Shown in Circles