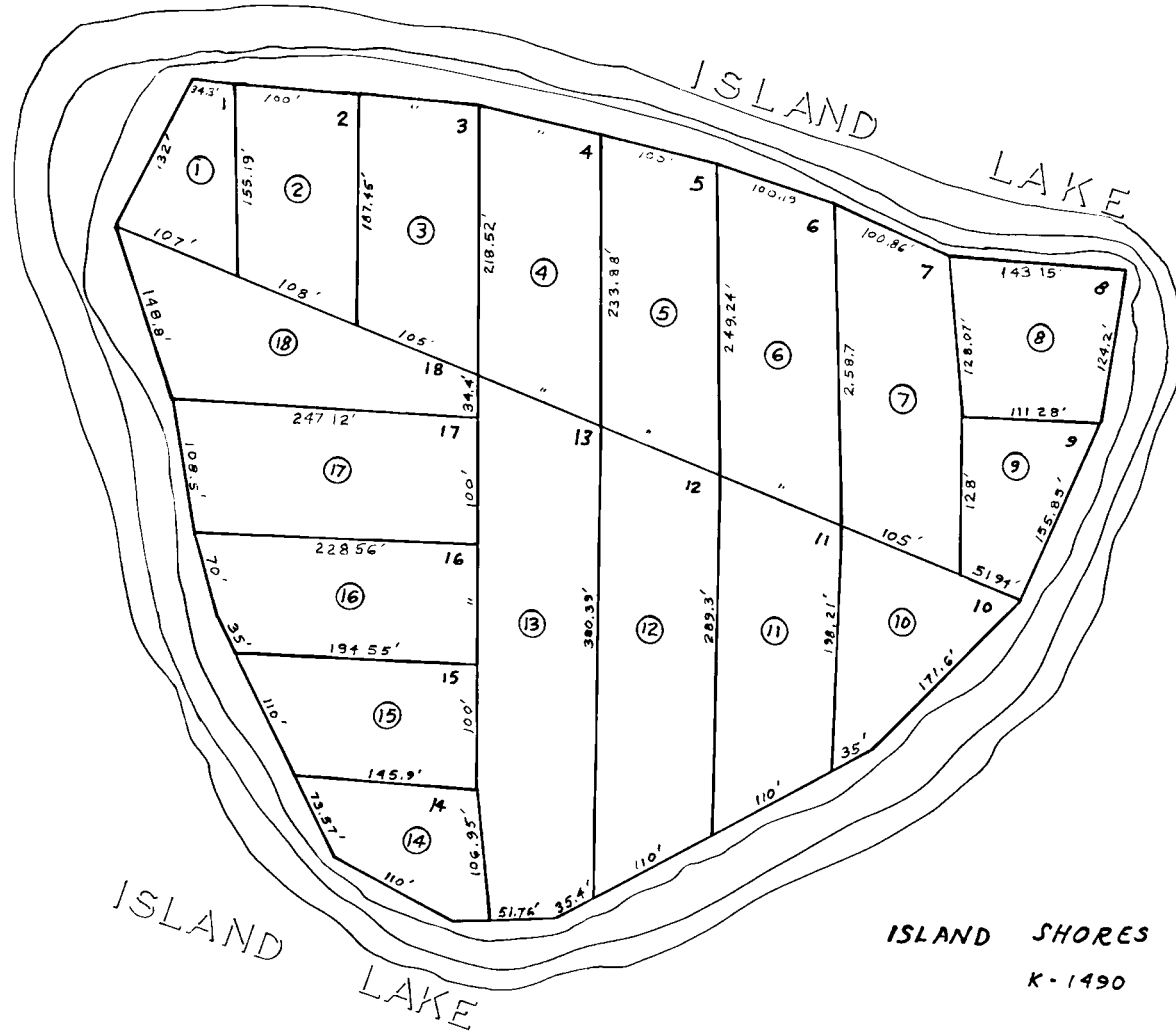


LOTS 11 & 12, SEC. 12, T.7N, R.12W, S.B.&M.



ISLAND SHORES SUBDIVISION
K-1490 8-9-67

Kenai Peninsula Borough, Alaska

NOTE - Assessor's Block Numbers Shown in Ellipses
Assessor's Parcel Numbers Shown in Circles