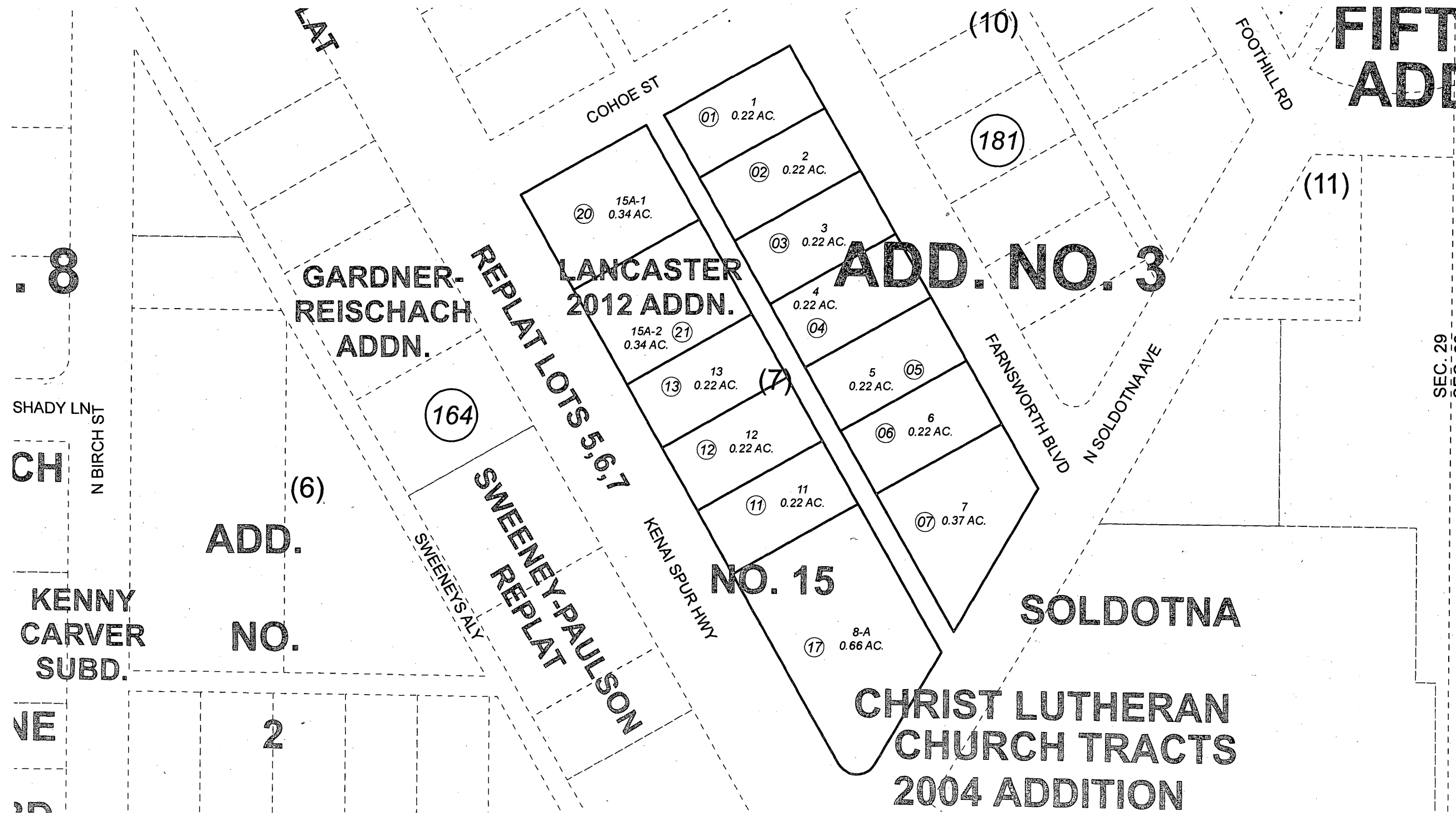


POR. SEC. 29, T05N, R10W, S.M.

059-182

**FIFTH
ADD**



ADD.
NO. 2

ADD. NO. 3

NO. 15

SOLDOTNA

**CHRIST LUTHERAN
CHURCH TRACTS
2004 ADDITION**



AUGUST 22, 2012

For 2013 assessment roll		
Delete	Add	Revise
To		
19	20,21	

Assessor's Map
Kenai Peninsula Borough

SOLDOTNA JUNCTION SUB ADDN 3 KN0000825
 SOLDOTNA JUNCTION SUB ADDN NO 15 KN0930029
 SOLDOTNA JUNCTION SUB LANCASTER 2ND ADDN KN2005018
 SOLDOTNA JUNCTION SUB LANCASTER 2012 ADDN KN2012041

This map is prepared for Kenai Peninsula Borough Assessing Dept. use only and is not intended for conveyance nor is it a survey.
 Note- Assessor's block Numbers Shown in Elipses
 Assessor's Parcel Numbers Shown in Circles