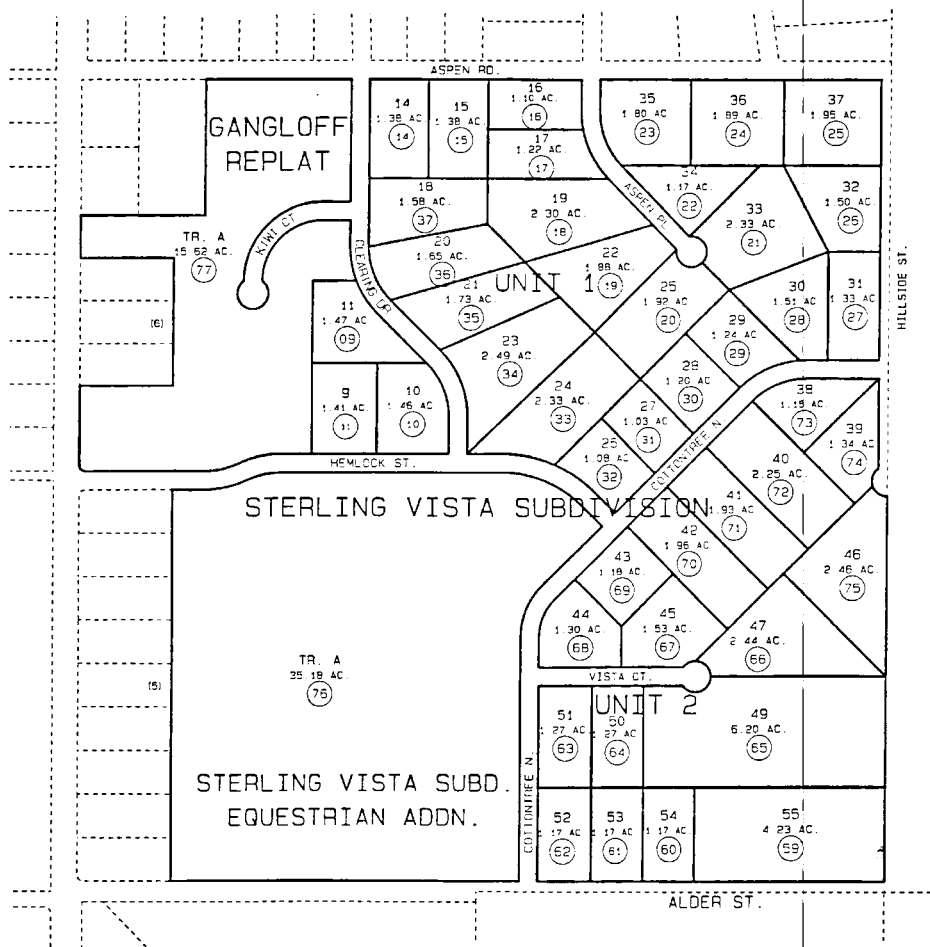


PORTION OF SW1/4 SEC. 23, T5N, R8W, SEWARD MERIDIAN

065-162

160



500

160

180



DATE: DEC. 2, 1997

FOR 1998 ASSESSMENT ROLL		
DELETE	ADD	REVISED
1-8.12.13 TO		
06550023		
06550024	77	
06550028		

Assessor's Map
Kenai Peninsula Borough

STERLING VISTA UNIT 1 KN840186
STERLING VISTA UNIT 2 KN840209
STERLING VISTA EQUESTRIAN ADDN. KN930028
STERLING VISTA GANGLOFF REPLAT KN970068

THIS MAP IS PREPARED FOR KENAI PENINSULA BOROUGH ASSESSING DEPT. USE ONLY AND IS NOT INTENDED FOR ANY OTHER USE OR REPRESENTATION

NOTE - Assessor's Block Numbers Shown in Ellipses
Assessor's Parcel Numbers Shown in Circles