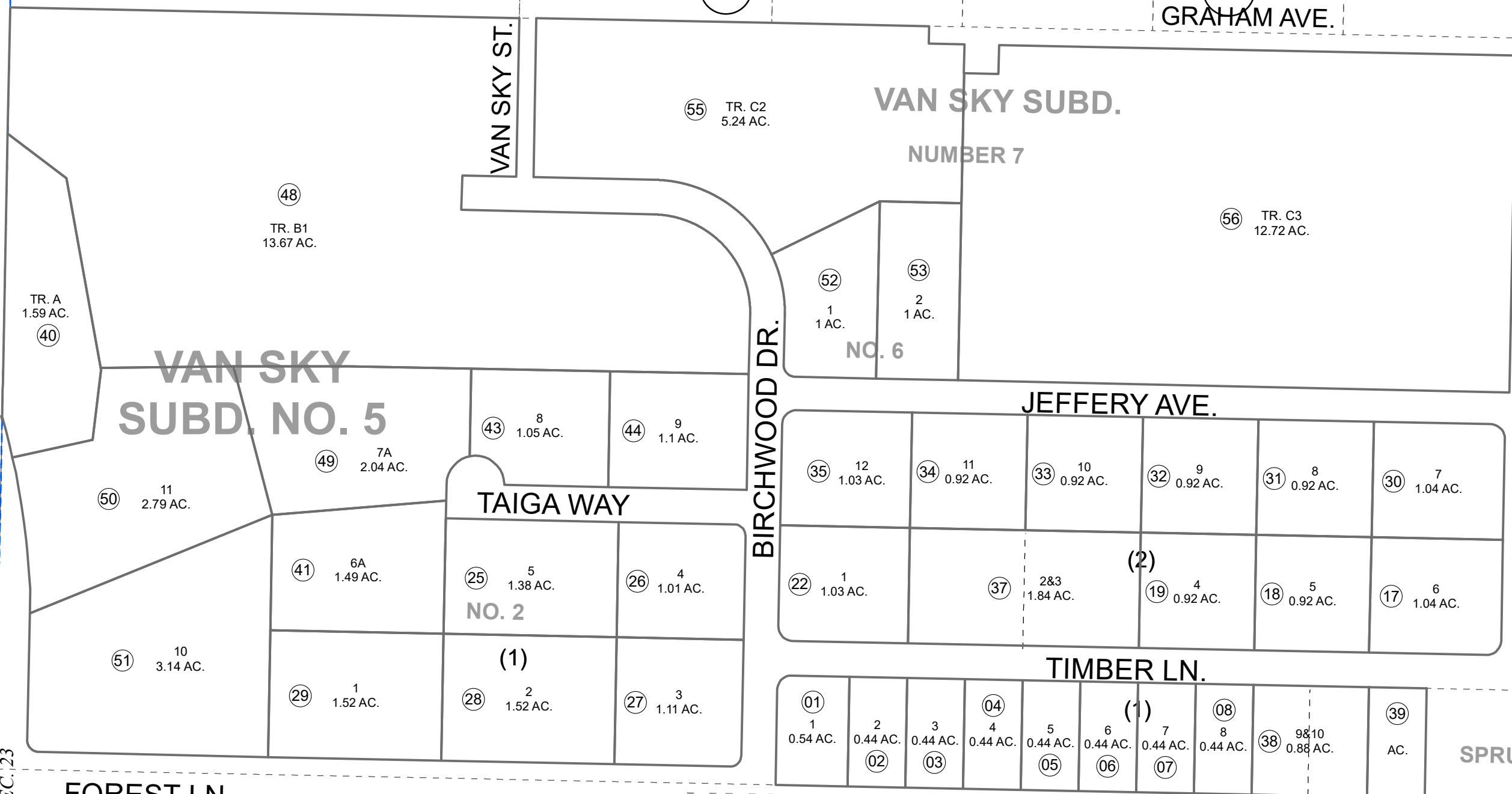


N1/2 SW1/4 SEC. 23, T07N, R12W, S.M.

014-160



150

150

170

1

280

150

SEC. 22
SEC. 23



0 100 200 Feet

SEPTEMBER 21, 2021

For 2022 assessment roll		
Delete	Add	Revise
	To	
54	55,56	

Assessor's Map
Kenai Peninsula Borough

- VAN SKY SUB □ KN0001593
- VAN SKY SUB □ KN0760020
- VAN SKY SUB NO 2 □ KN0770013
- VAN SKY SUB LOTS 7-12 BLOCK 2 □ KN0820127
- VAN SKY SUB □ KN0970101
- VAN SKY SUB NO 3 AMENDED □ KN2001009
- VAN SKY SUB NO 4 KN2009023
- VAN SKY SUB NO 5 KN2009060
- VAN SKY SUB NO 6 KN2012050
- VAN SKY SUB NUMBER 7 KN2021046

Note- Assessor's block Numbers Shown in Ellipses
Assessor's Parcel Numbers Shown in Circles

This map is prepared for Kenai Peninsula Borough Assessing Dept. use only and is not intended for conveyance nor is it a survey.