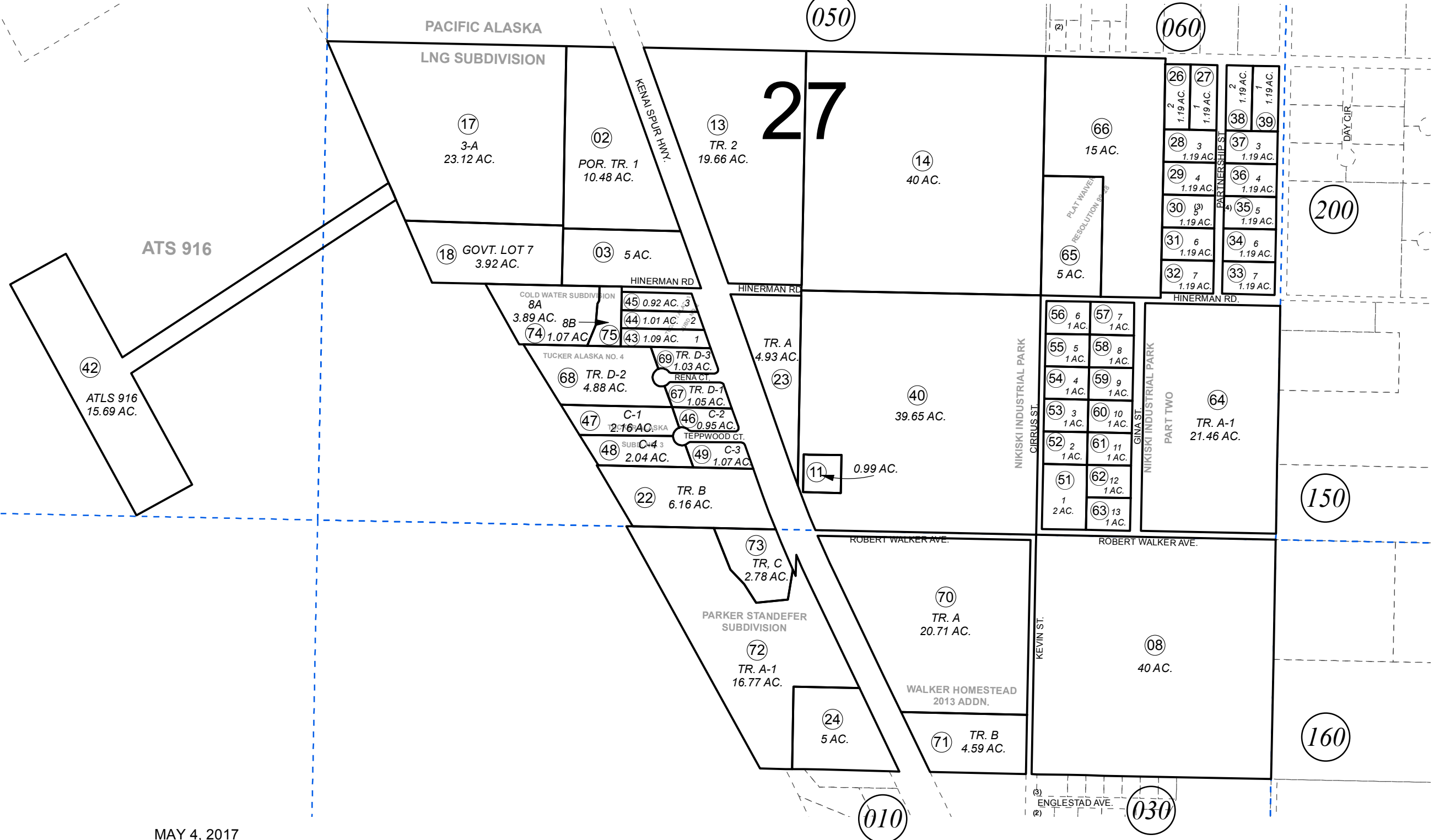


S1/2 SEC. 27 & N1/2 N1/2 SEC. 34, T07N, R12W, S.M.

015-040

3

27



ATS 916

ATLS 916  
15.69 AC.

MAY 4, 2017

For 2018 assessment roll		
Delete	Add	Revise
	To	
04	74,75	



0 125 250 500 Feet

Assessor's Map  
Kenai Peninsula Borough

JOHN A WARREN SUB RESUB OF LOT 27A KN0001528  
 JOHN A WARREN SUB NO 3 KN0960057  
 NORTH KENAI UDELHOVEN SUB KN2010004  
 WALKER HOMESTEAD 2013 ADDN KN2013065  
 RECORD OF SURVEY KN2013066  
 PARKER STANDEFER SUB KN2016061  
 COLD WATER SUB KN2017007

This map is prepared for Kenai Peninsula Borough Assessing Dept. use only and is not intended for conveyance nor is it a survey.

Note- Assessor's block Numbers Shown in Ellipses  
 Assessor's Parcel Numbers Shown in Circles