

POR. SEC. 16, T07N, R12W, S.M.

014-050

VRON RD.

NORTH KENAI RD.

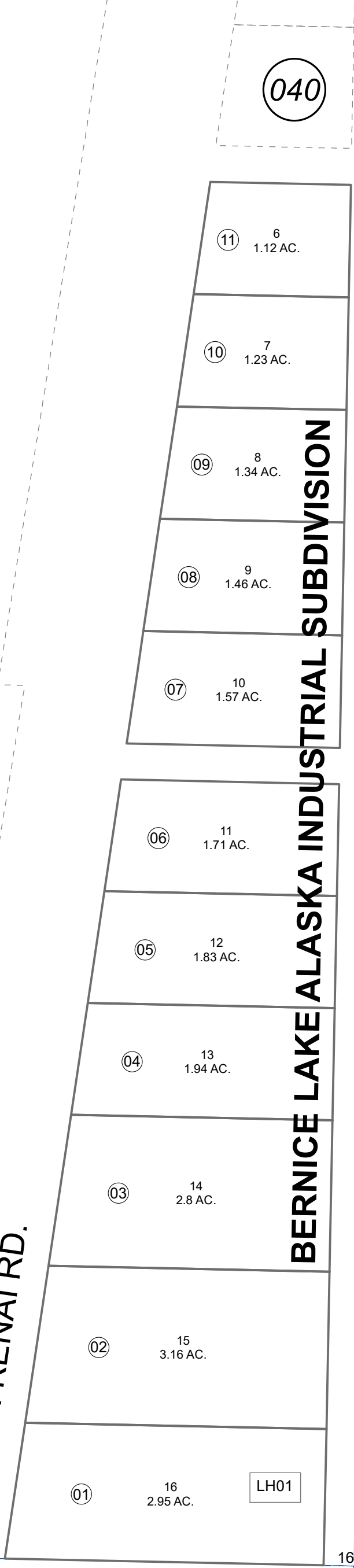
**BERNICE LAKE ALASKA INDUSTRIAL SUBDIVISION**

TIKOPIA ST.

BEAVER AV

GALEN AVE.

MALAITA AVE.



030

040

(3)

070

(4)

180

(5)

020



FEBRUARY 4, 2022

For 2022 assessment roll	
Delete	Add
To	01
	(ADDED LEASEHOLD)

This map is prepared for Kenai Peninsula Borough Assessing Dept. use only and is not intended for conveyance nor is it a survey.

Note- Assessor's block Numbers Shown in Ellipses Assessor's Parcel Numbers Shown in Circles

Assessor's Map Kenai Peninsula Borough BERNICE LAKE ALASKA INDUSTRIAL SUB KN0001560