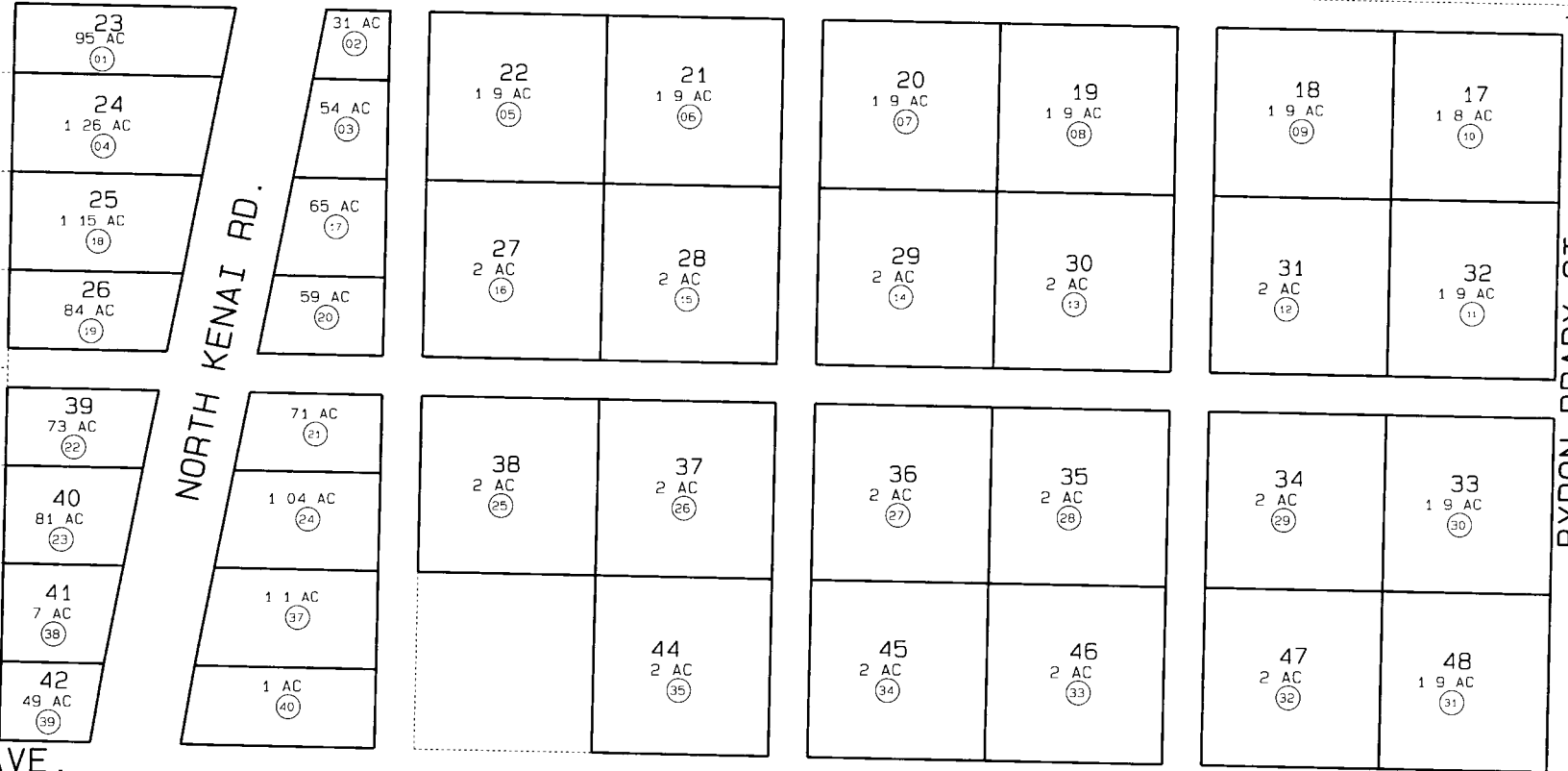


26

CHESTER AVE.

LEWIS LN.

11 12
14 13



10

NORTH KENAI RD.

BYRON BRADY ST.

20

SHARON AVE.

15



DATE SEPT. 26, 1996

FOR 19 97 ASSESSMENT ROLL		
DELETE	ADD	REVISED
TO		
36	01714199	

Assessor's Map
Kenai Peninsula Borough

THIS MAP IS PREPARED FOR KENAI PENINSULA BOROUGH ASSESSING DEPT USE ONLY AND IS NOT INTENDED FOR ANY OTHER USE OR REPRESENTATION

NOTE - Assessor's Block Numbers Shown In Ellipses
Assessor's Parcel Numbers Shown In Circles