

POR. SEC. 15, T07N, R12W, S.M.

014-070

BEAVER AVE.

060

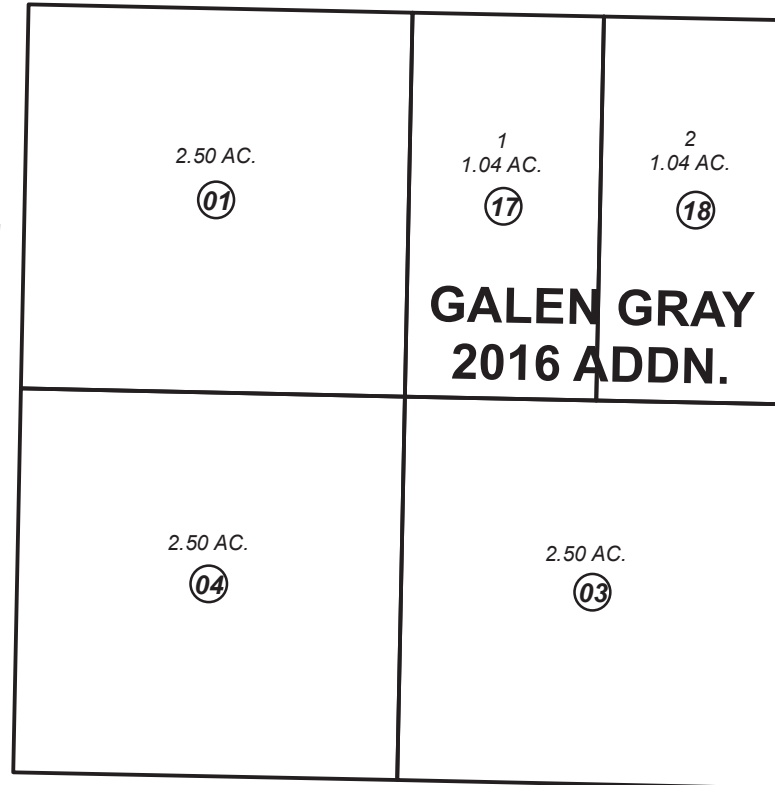
(2)

LAKE ALASKA SUBDIV

TIKOPIA ST.

050

SEC. 16  
SEC. 15

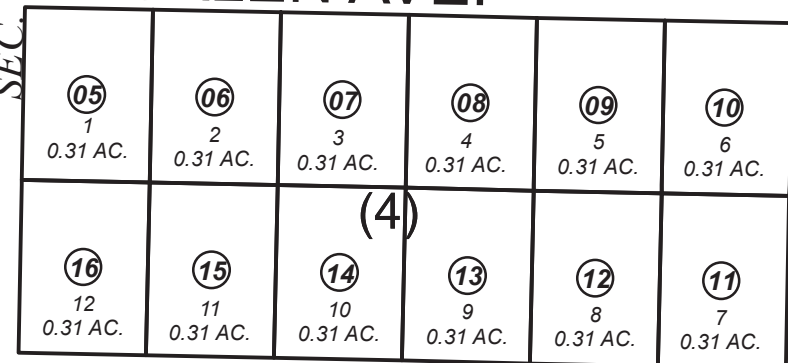


ERROMANGA AVE.

180

(3)

GALEN AVE.



TARAWA ST.

SUVA ST.

MALAITA AVE.

180

NOVEMBER 1, 2016

For 2017 assessment roll		
Delete	Add	Revise
To		
02	17,18	



0 25 50 100 Feet

Assessor's Map  
Kenai Peninsula Borough

GALEN GRAY SUB KN0000899  
GALEN GRAY SUB 2016 ADDN KN2016011

Note- Assessor's block Numbers Shown in Ellipses  
Assessor's Parcel Numbers Shown in Circles

This map is prepared  
for Kenai Peninsula  
Borough Assessing Dept.  
use only and is not  
intended for conveyance  
nor is it a survey.