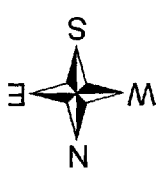
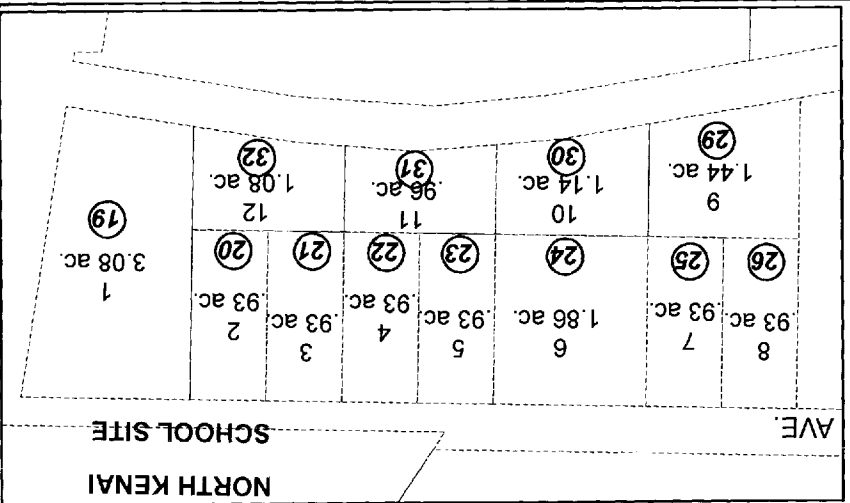
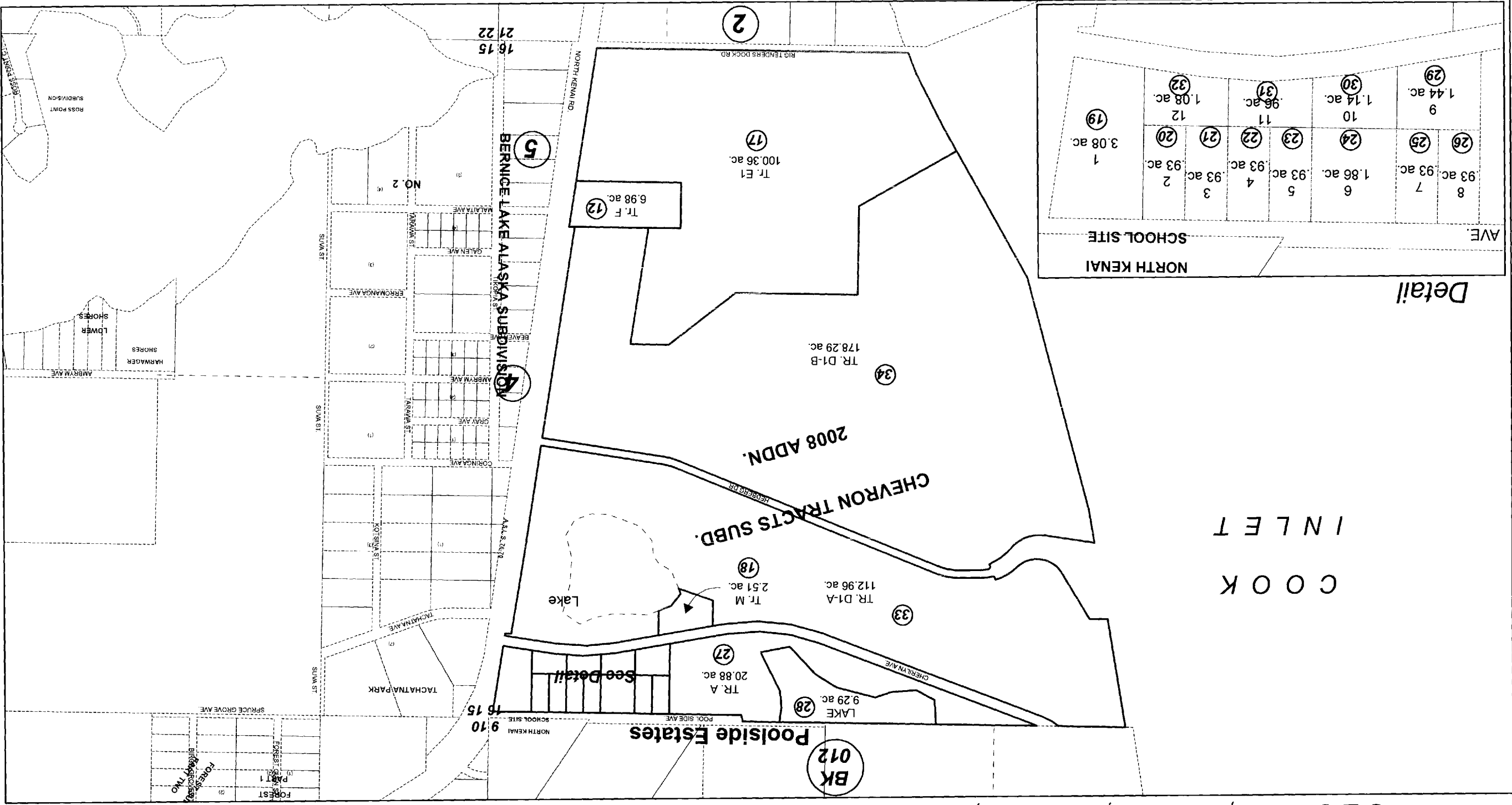


014-030

SEC. 16, T07N, R12W, S.M.



For 2009 assessment roll		
Delete	Add	Revise
16	To	33,34

JULY 10, 2008

Assessor's Map Kenai Peninsula Borough
 CHEVRON TRACTS KN0960090
 POOLSIDE ESTATES KN2001012
 CHEVRON TRACTS SUB 2008 ADDN KN2008065

This map is prepared for Kenai Peninsula Borough Assessing Dept. use only and is not intended for conveyance nor is it a survey.

Note- Assessor's block Numbers Shown in Ellipses
 Assessor's Parcel Numbers Shown in Circles