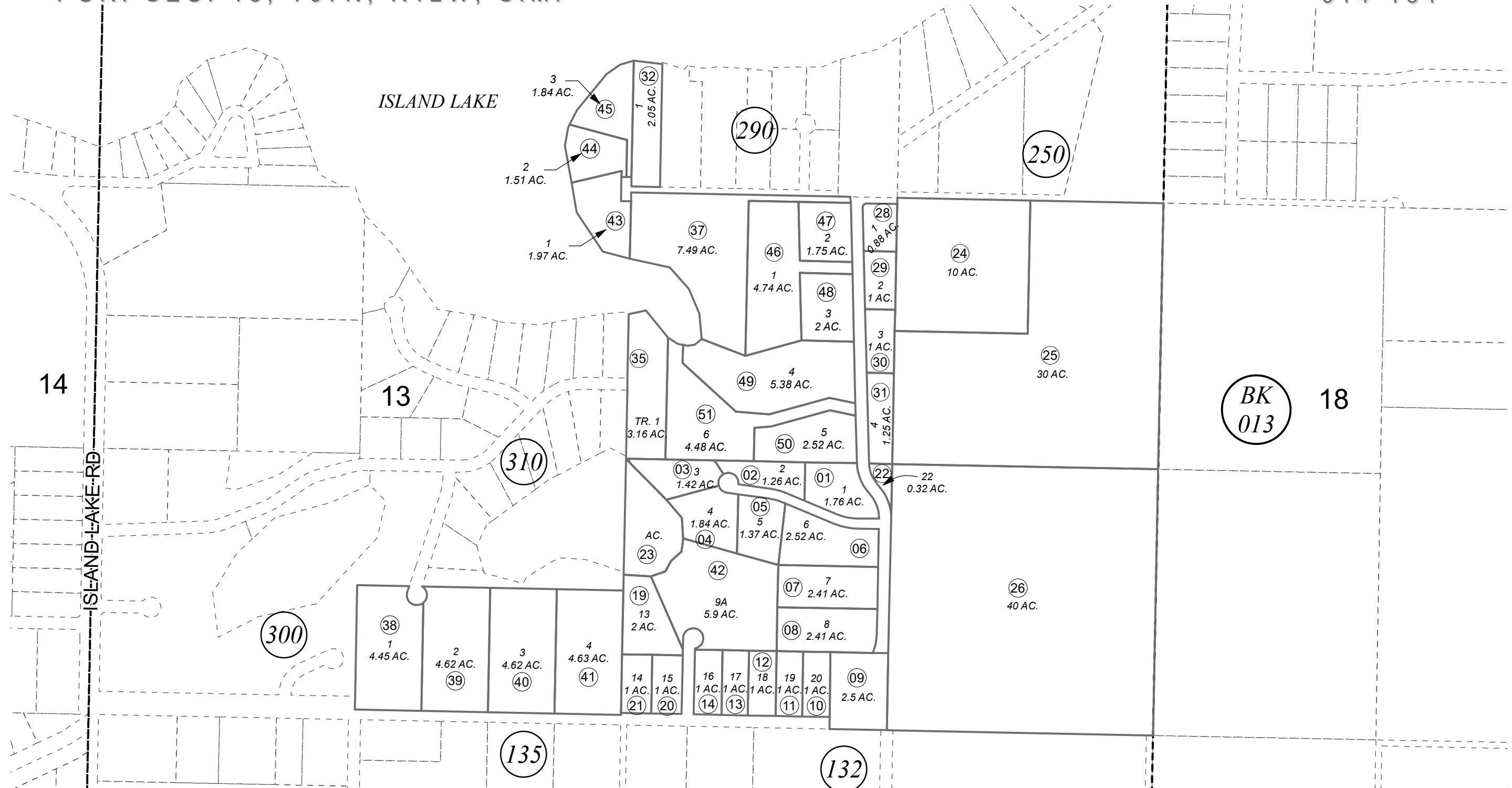


POR. SEC. 13, T07N, R12W, S.M.

014-134

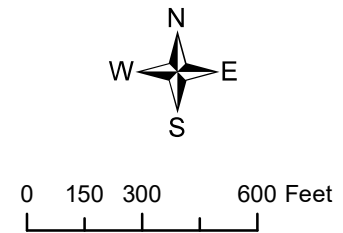


MAY 7, 2024

For 2025 assessment roll		
Delete	Add	Revise
	To	
36	46-51	

TEAL BAY SUB □ KN0001743
 CRABTREE SUB □ KN0830187
 TEAL BAY SUB NO 2 □ KN0840119
 CACHE SUB □ KN0840269
 TALL TIMBER SUB □ KN0840303
 CACHE SUB CHOAT REPLAT KN2009027
 TRUST LAND SURVEY 2012-01, ISLAND LAKE SUB KN2013019
 TEAL BAY SUB PATTISON ADDN KN2024009

Assessor's Map
 Kenai Peninsula Borough



This map is prepared for Kenai Peninsula Borough Assessing Dept. use only and is not intended for conveyance nor is it a survey.
 Note- Assessor's block Numbers Shown in Ellipses
 Assessor's Parcel Numbers Shown in Circles