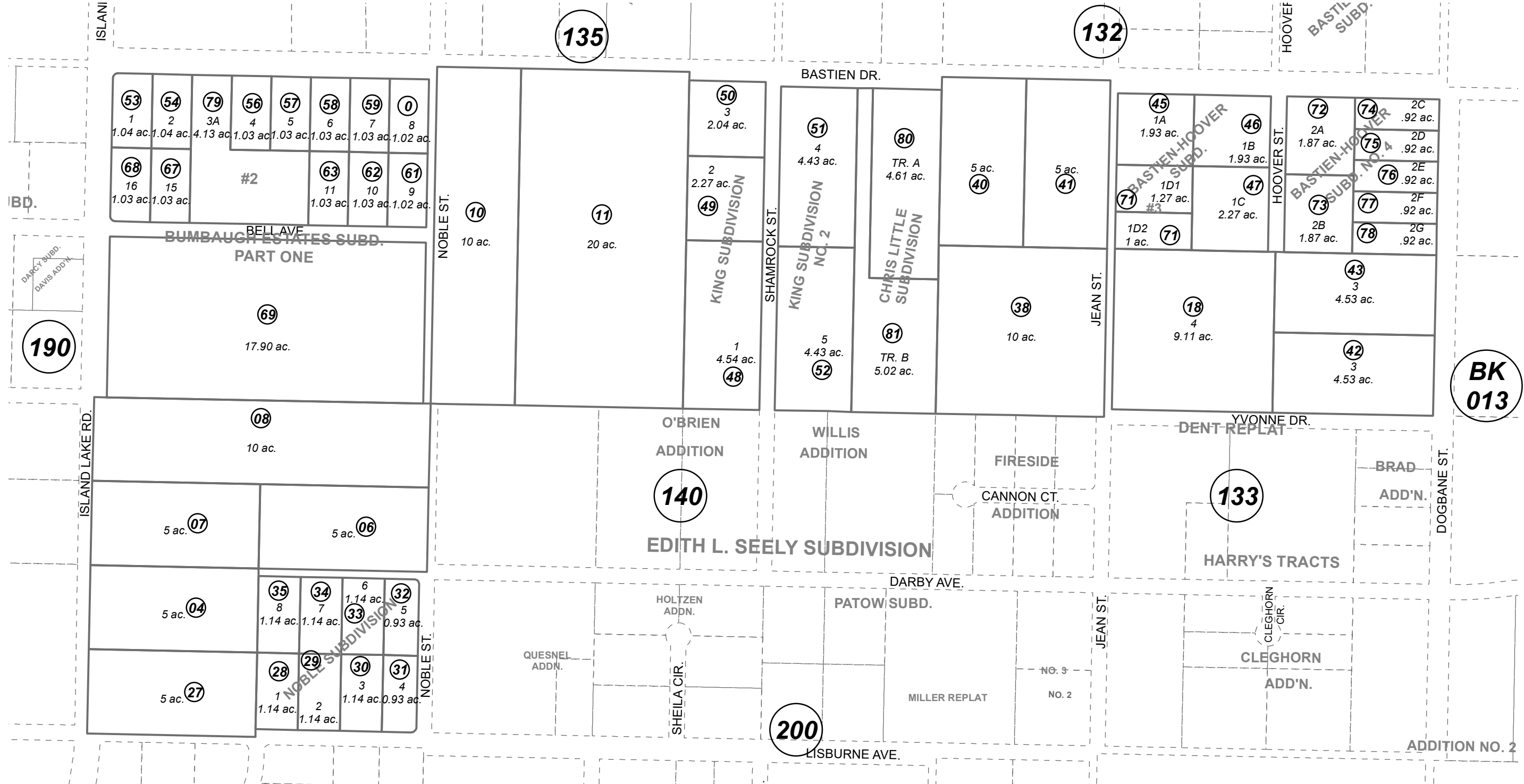


N1/2 SEC. 24, T07N, R12W, S.M.

014-131



0 200 400 Feet

320

NOVEMBER 20, 2020

For 2021 assessment roll		
Delete	Add	Revise
To		81
(ACREAGE CHANGE)		

Assessor's Map  
Kenai Peninsula Borough

- BASTIEN SUB NO 2 KN0001760
- NOBLE SUB KN0770019
- BASTIEN-HOOVER SUB KN0800100
- KING SUB KN0830130
- KING SUB NO 2 KN0920080
- BUMBAUGH ESTATES SUB PART ONE KN2006101
- BASTIEN-HOOVER SUB #3 KN2007082
- BASTIEN HOOVER SUB NO 4 KN2008091
- BUMBAUGH ESTATES #2 KN2017020
- CHRIS LITTLE SUB KN2020037
- CHRIS LITTLE SUB AMENDED KN2020062

133

Note- Assessor's block Numbers Shown in Ellipses  
Assessor's Parcel Numbers Shown in Circles

This map is prepared for Kenai Peninsula Borough Assessing Dept. use only and is not intended for conveyance nor is it a survey.