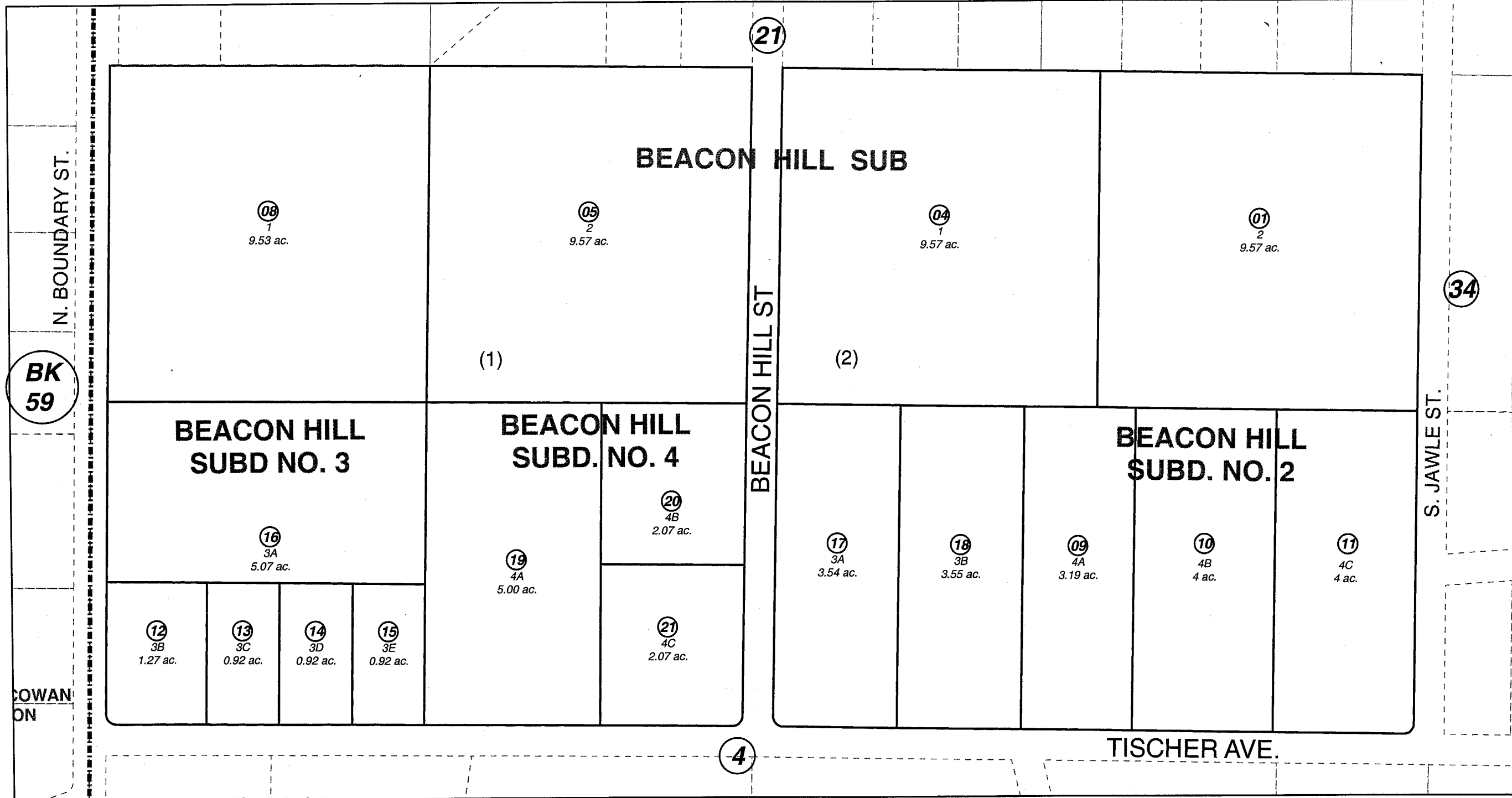


S1/2 NW1/4 SEC. 26, T05N, R10W, S.M.

058-211



BK 59

COWAN ON

DECEMBER 5, 2005

For 2006 assessment roll

Delete	Add	Revise
6	To 19-21	



Assessor's Map  
Kenai Peninsula Borough

BEACON HILL SUB □ KN0086017  
 BEACON HILL SUB □ KN0860171  
 BEACON HILL SUB NO 2 □ KN0920021  
 BEACON HILL SUB NO 3 □ KN0940012  
 BEACON HILL SUB ORLIN REPLAT □ KN2001036  
 BEACON HILL SUB #4 KN2005104

This map is prepared for Kenai Peninsula Borough Assessing Dept. use only and is not intended for conveyance nor is it a survey.

Note- Assessor's block Numbers Shown in Elipses  
 Assessor's Parcel Numbers Shown in Circles