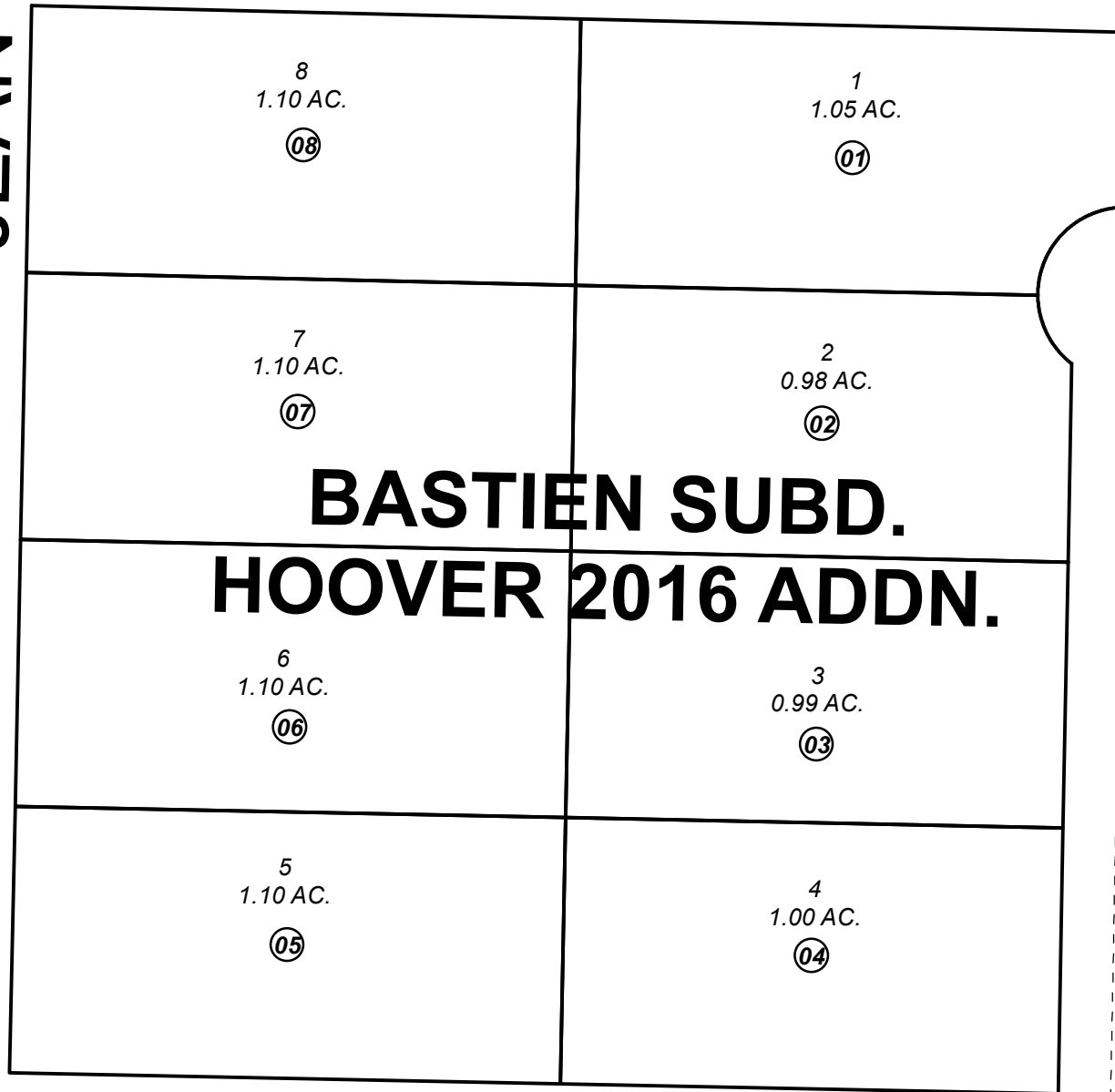


**U.B.D.  
NO. 2**

**JEAN ST.**

(132)



**BASTIEN SUBD.  
HOOVER 2016 ADDN.**

**HOOVER CIR.**

(132)

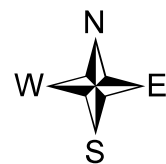
**BASTIEN-HOOVER  
SUBD. NO.**

(132)

*SEC. 13*  
*SEC. 24*

**BASTIEN DR.**

(131)



0 25 50 100 Feet

NOVEMBER 9, 2016

For 2017 assessment roll

Delete Add Revise

To

**NEW  
PAGE**

Assessor's Map  
Kenai Peninsula Borough

BASTIEN SUB HOOVER 2016 ADDN KN2016063

This map is prepared for Kenai Peninsula Borough Assessing Dept. use only and is not intended for conveyance nor is it a survey.

Note- Assessor's block Numbers Shown in Elipses  
Assessor's Parcel Numbers Shown in Circles