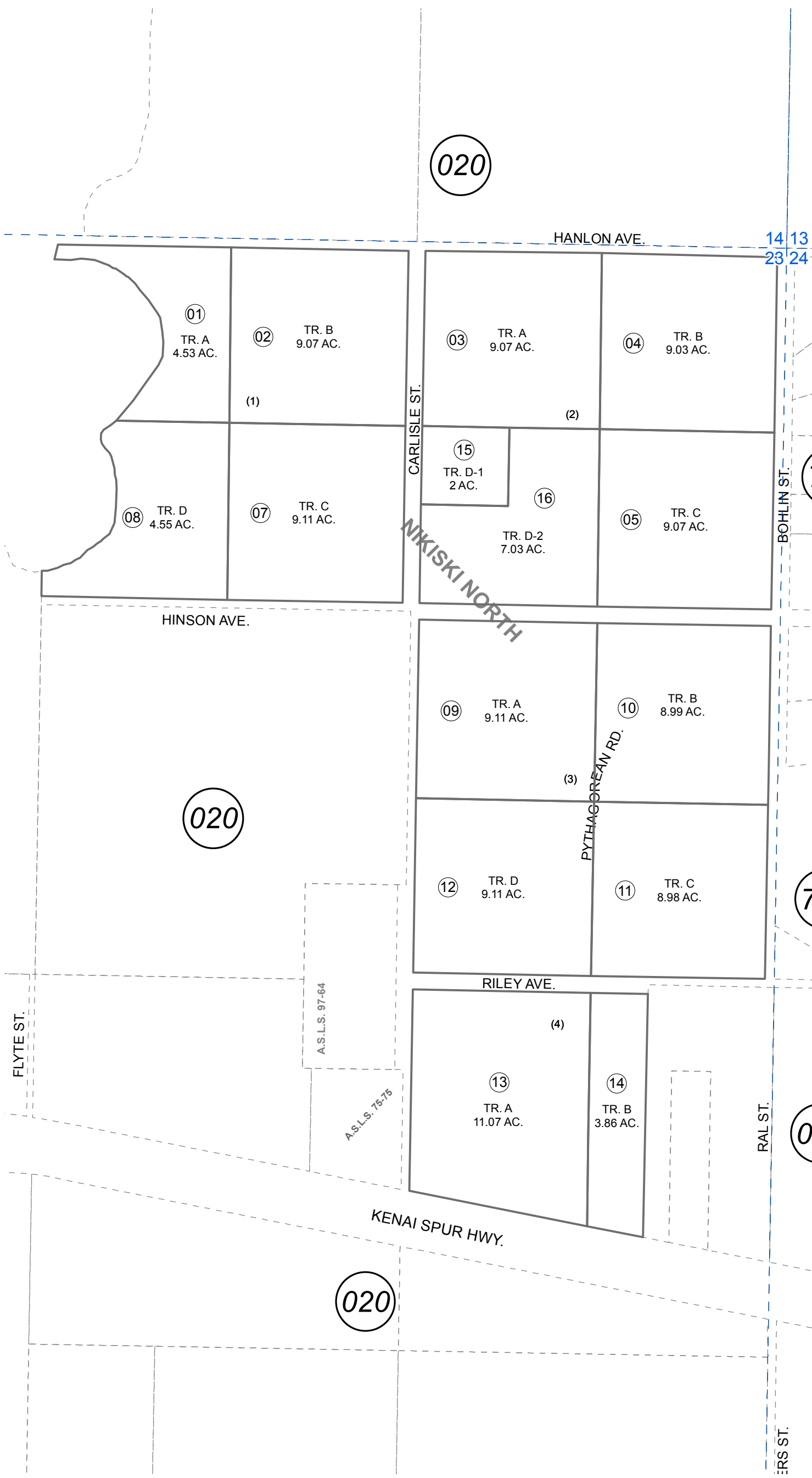


POR. SEC. 23, T08N, R11W, S.M.

013-350



NOVEMBER 30, 2016

For 2017 assessment roll	
Delete	Add
	Revise
To	11
(ACREAGE CHANGE)	



Assessor's Map  
Kenai Peninsula Borough

NIKISKI NORTH SUB KN0760121  
NIKISKI NORTH SUB TR D1 & D2 BLK 2 KN0830288

This map is prepared for Kenai Peninsula Borough Assessing Dept. use only and is not intended for conveyance nor is it a survey.

Note- Assessor's block Numbers Shown in Ellipses  
Assessor's Parcel Numbers Shown in Circles