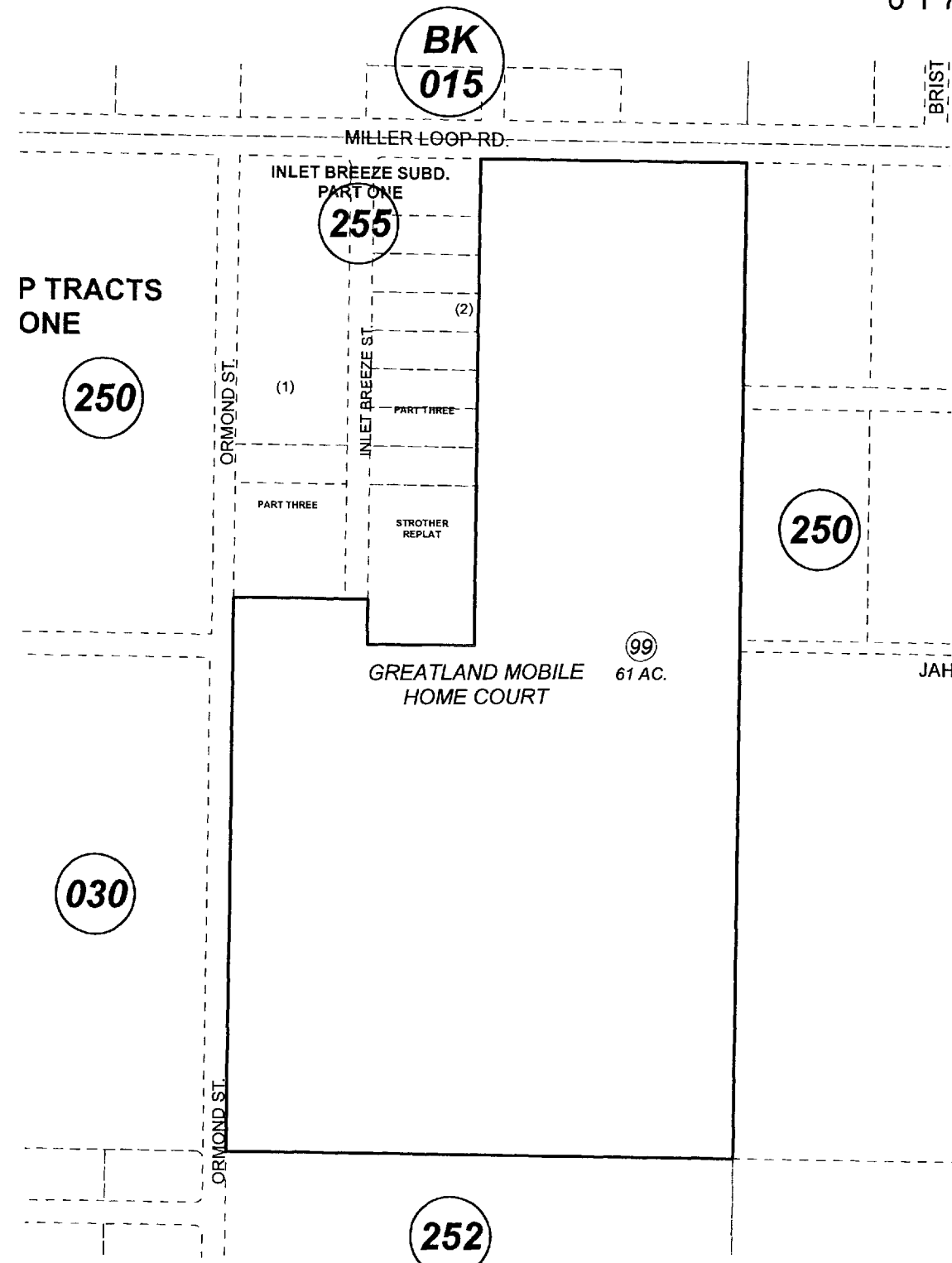


POR. SEC. 2, T06N, R12W, S.M.

017-253

GREATLAND MOBILE HOME COURT 800-200



JANUARY 11, 2010

For 2010 assessment roll

Delete	Add	Revise

To

99
(ACREAGE CHANGE)

Assessor's Map
Kenai Peninsula Borough

This map is prepared for Kenai Peninsula Borough Assessing Dept. use only and is not intended for conveyance nor is it a survey.

Note- Assessor's block Numbers Shown in Ellipses
Assessor's Parcel Numbers Shown in Circles