

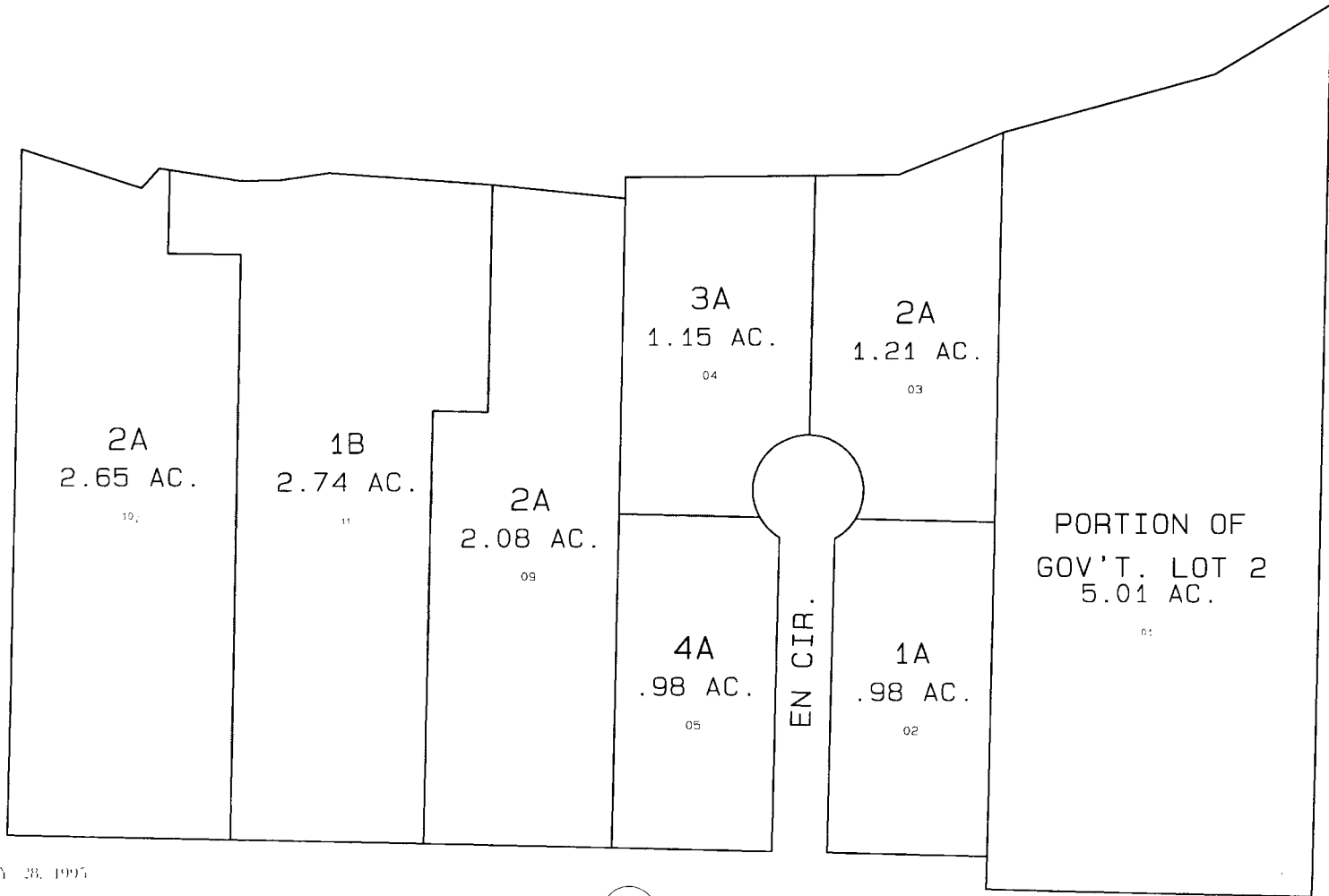
E1/2 GOV'T. LOT 2, SEC. 13, T7N, R12W, SEWARD MERIDIAN

014-290

ISLAND LAKE

134

25



JULY 28, 1995

96

TEAL ST.

134



0112100 0112900  
0112900 0112901

Assessor's Map  
Kenai Peninsula Borough

N.B. STATES KN79006  
N.B. STATES #2 KN80061  
MILLAGE KN91001B  
MILLAGE GRABER REPEAT KN750029