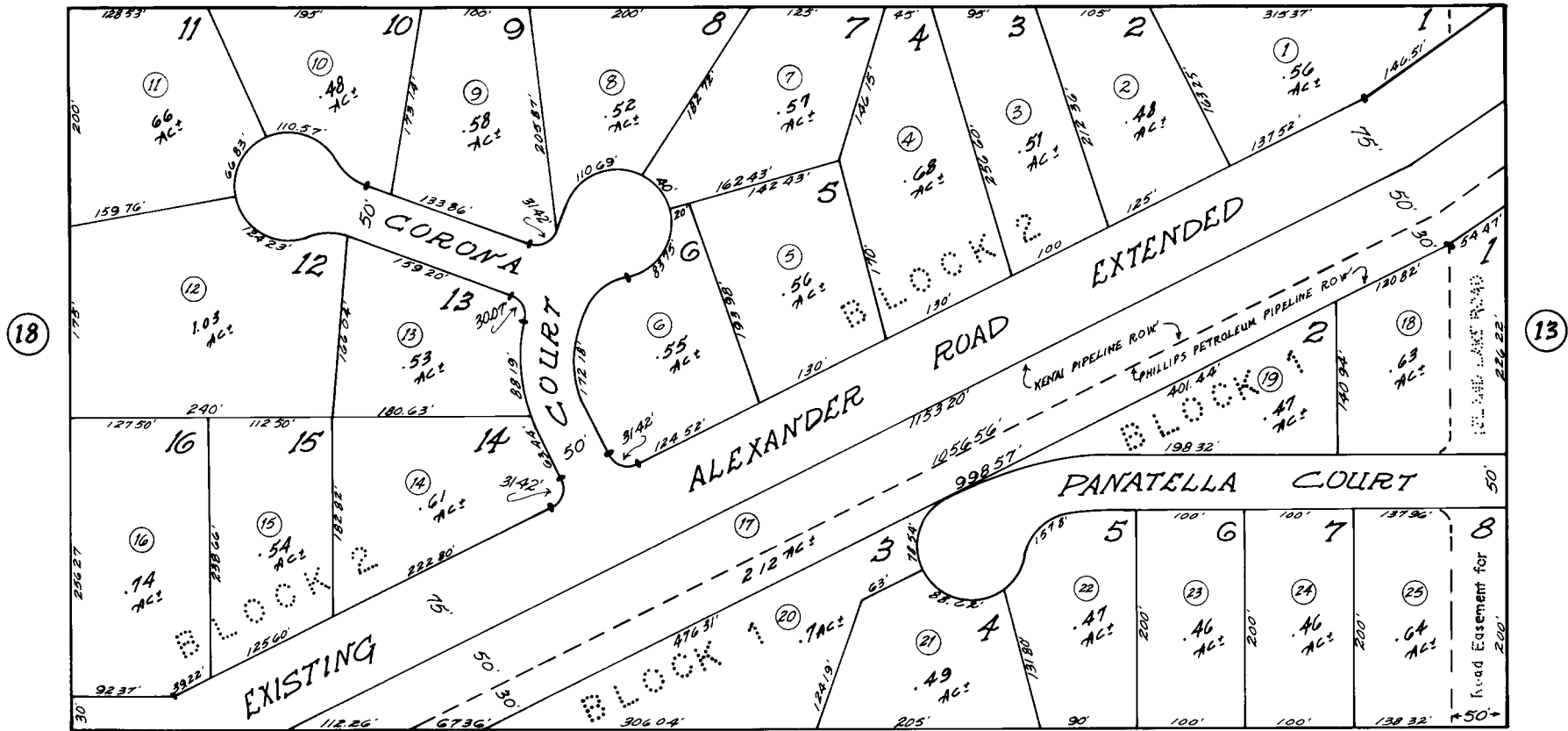


N 1/2 SE 1/4 SE 1/4 SEC. 14, T. 7N, R. 12W S.M.



STEPHENS'S SUB.

Assessor's Map 76-111

Kenai Peninsula Borough, Alaska

NOTE - Assessor's Block Numbers Shown in Ellipses
Assessor's Parcel Numbers Shown in Circles