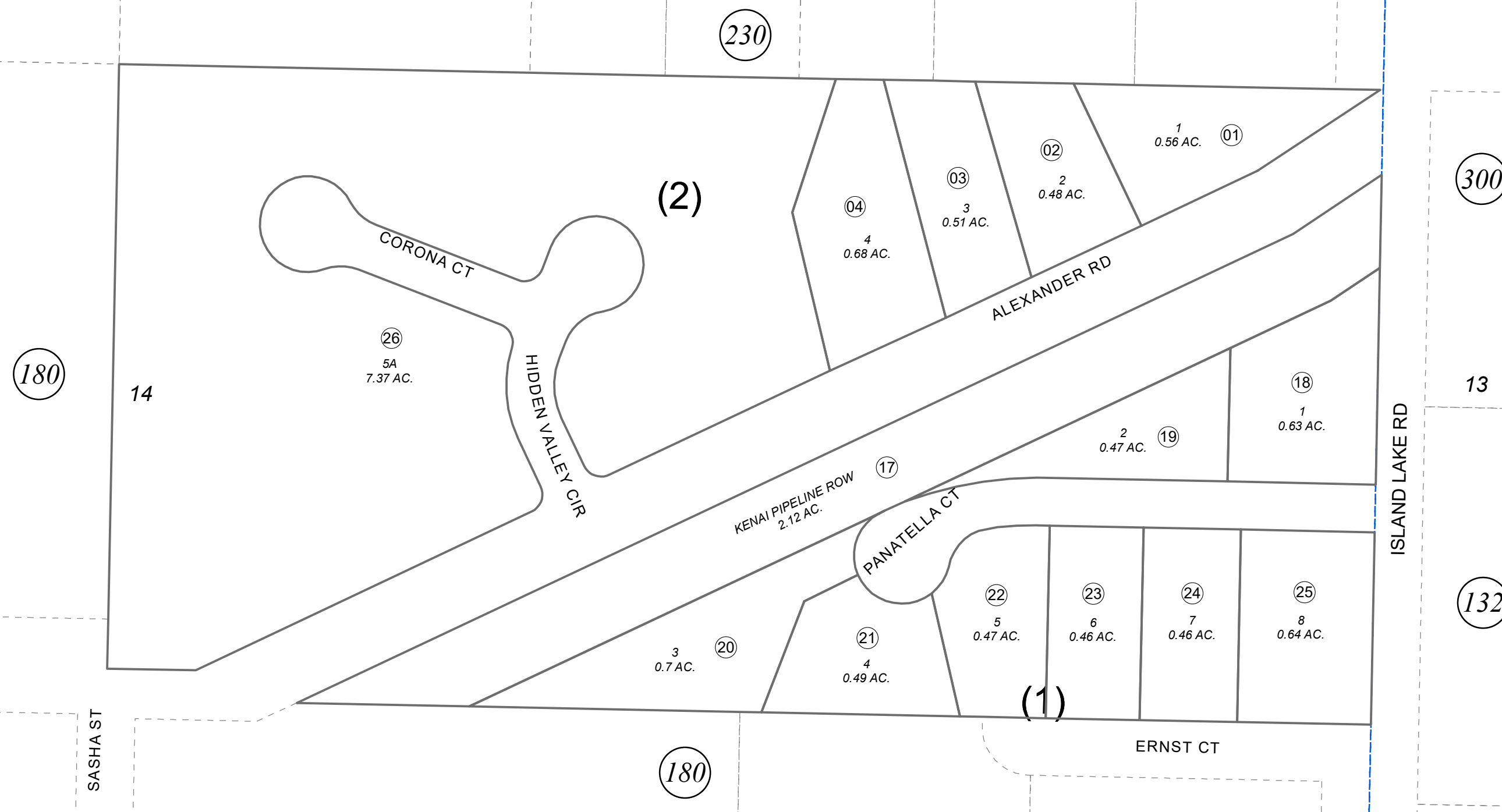


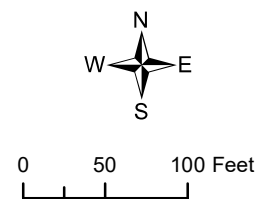
N1/2 SE1/4 SE1/4 SEC. 14, T07N, R12W, S.M.

014-220



DECEMBER 1, 2023

For 2024 assessment roll		
Delete	Add	Revise
To		
05-16	26	



Assessor's Map
Kenai Peninsula Borough

STEPHENS SUB KN07601111
STEPHENS SUB WHITCOMB REPLAT KN2023053

Note- Assessor's block Numbers Shown in Ellipses
Assessor's Parcel Numbers Shown in Circles

This map is prepared for Kenai Peninsula Borough Assessing Dept. use only and is not intended for conveyance nor is it a survey.