

017-270

POR. SEC. 11, T06N, R12W, S.M

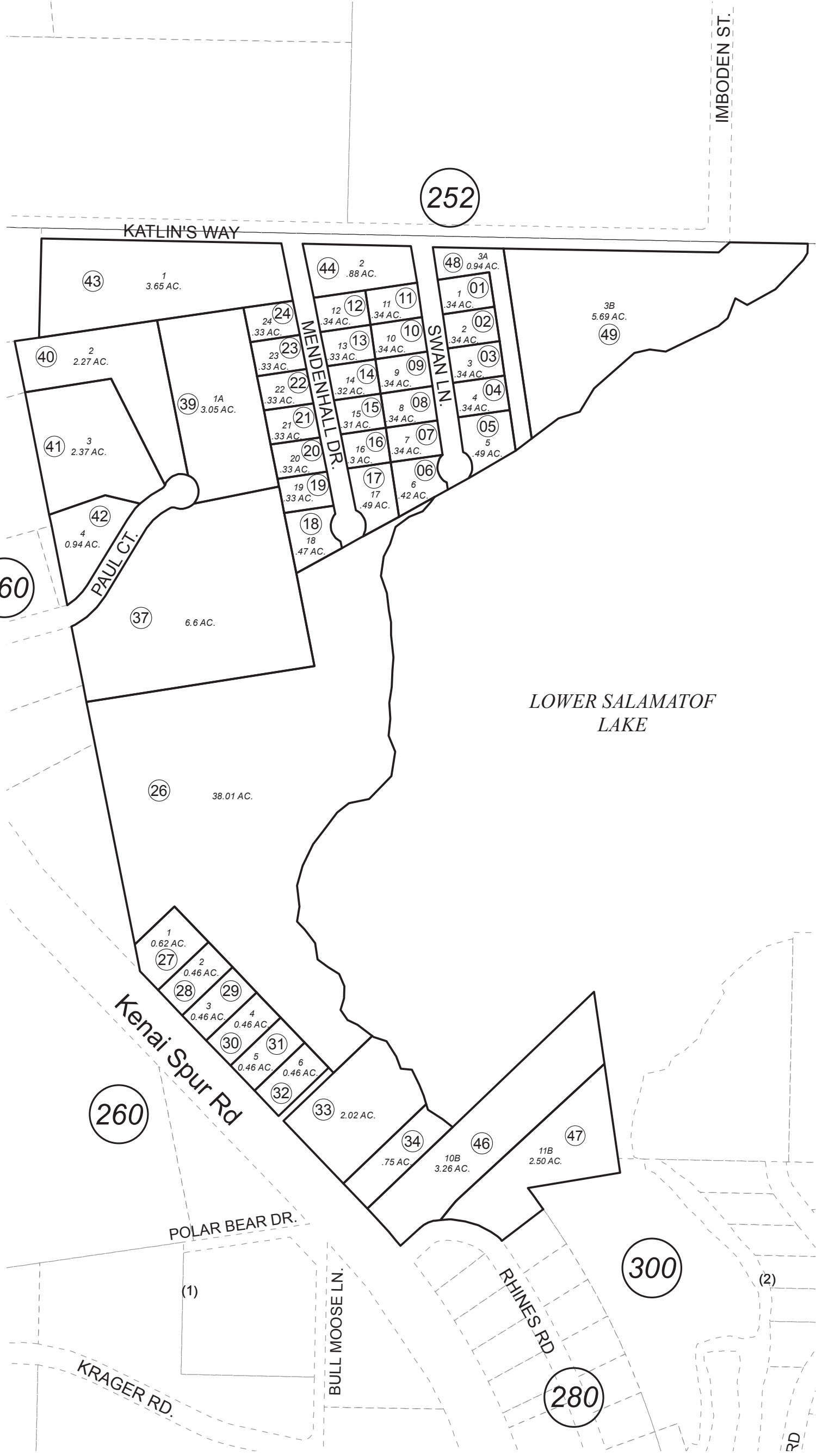
260

260

252

300

280



This map is prepared for Kenai Peninsula Borough Assessing Dept. use only and is not intended for conveyance nor is it a survey.

Note- Assessor's block Numbers Shown in Ellipses Assessor's Parcel Numbers Shown in Circles

WAGLEY SUB KN0001477
 LOWER SALAMATOF LAKE SUB KN0001532
 MONFOR SUB NO 2 KN0960088
 JOHNSONS LANDING SUB NO TWO KN2007142
 LAKE SALAMATOF CRESCENT RHINES REPLAT #2 KN2008101
 JOHNSONS LANDING SUB NO THREE KN2017068

Assessor's Map
 Kenai Peninsula Borough



JANUARY 3, 2018

For 2018 assessment roll	
Delete	Add
	Revise
To	
45	48,49