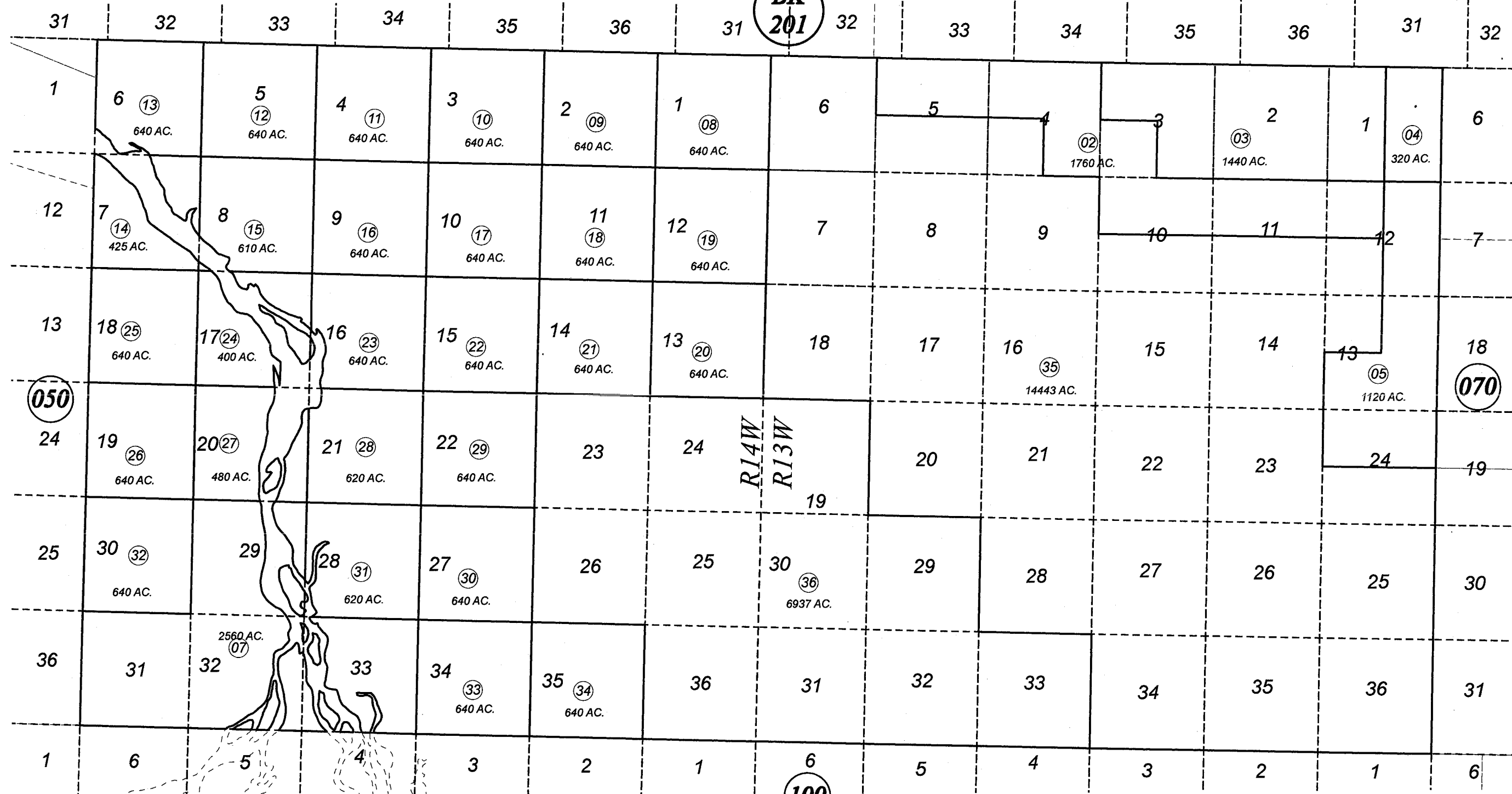


T12N R13W & T12N R14W, S.M.

211-060

BK
201



MARCH 6, 2007

For 2007 assessment roll		
Delete	Add	Revise
To		
6	35,36	



Assessor's Map
Kenai Peninsula Borough

This map is prepared for Kenai Peninsula Borough Assessing Dept. use only and is not intended for conveyance nor is it a survey.
Note- Assessor's block Numbers Shown in Ellipses
Assessor's Parcel Numbers Shown in Circles