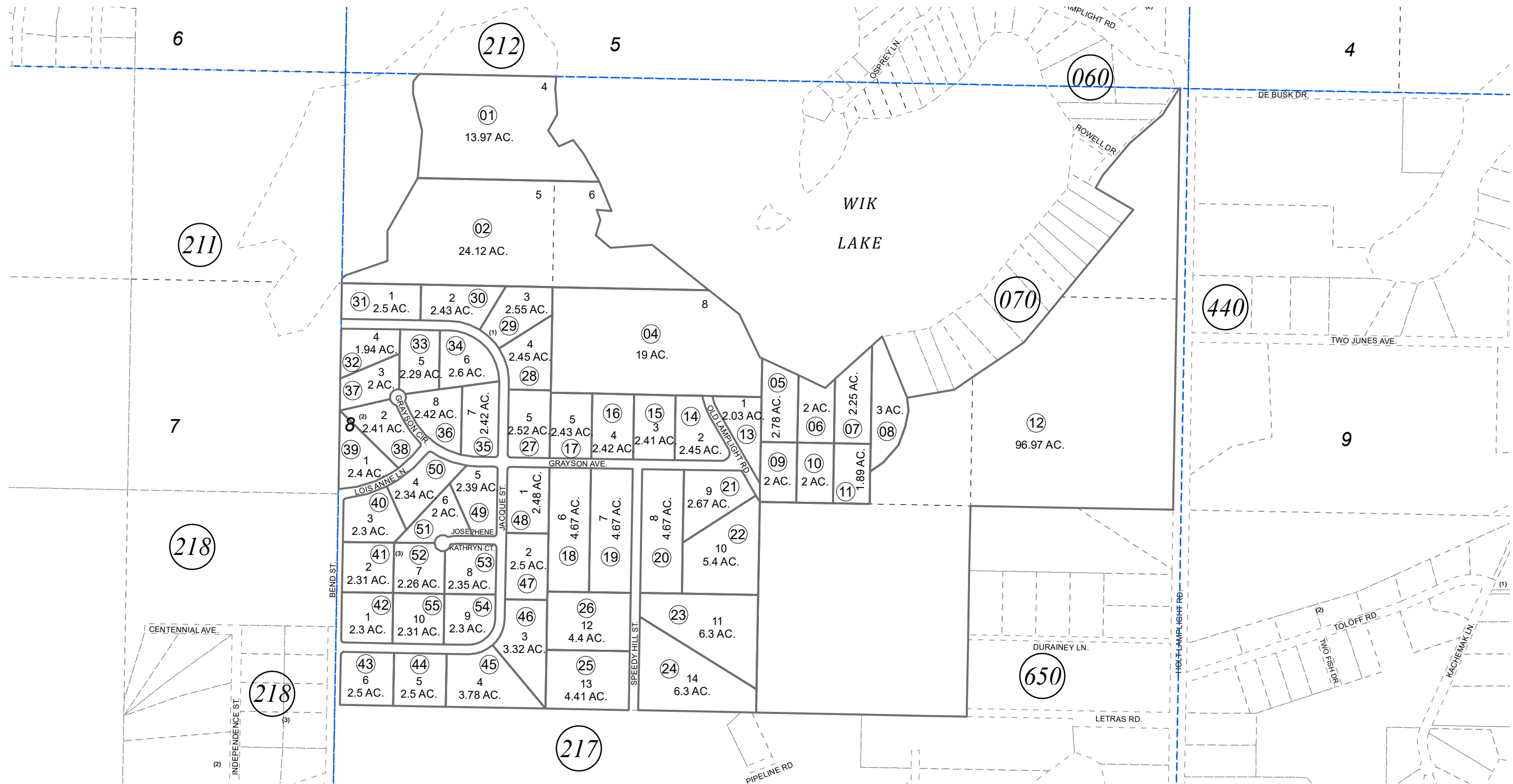


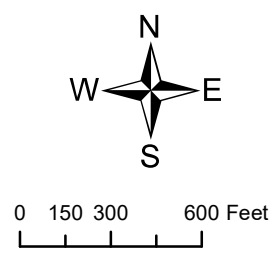
N3/4 SEC. 8, T07N, R11W, S.M.

013-216



JULY 8, 2021

For 2022 assessment roll		
Delete	Add	Revise
To		01
(ACREAGE CHANGE)		



Assessor's Map
Kenai Peninsula Borough

THOMPSON HOMESTEAD HAPPY HOLLOW ACRES KN0840274
RECORD OF SURVEY KN2021031

This map is prepared for Kenai Peninsula Borough Assessing Dept. use only and is not intended for conveyance nor is it a survey.
Note- Assessor's block Numbers Shown in Ellipses
Assessor's Parcel Numbers Shown in Circles