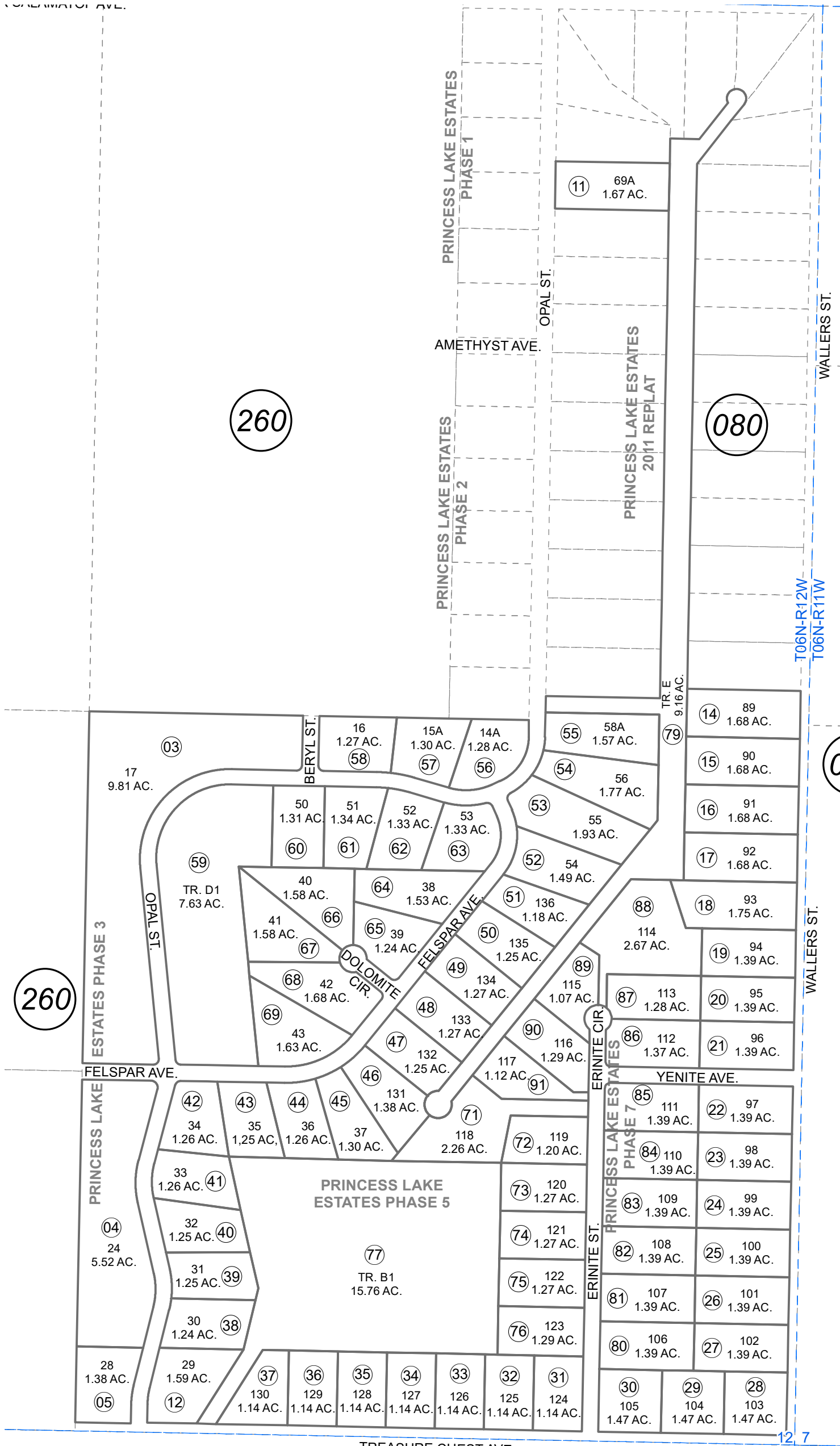


SE1/4 AND POR. NE1/4 SEC. 12, T06N, R12W, S.M.

017-265



This map is prepared for Kenai Peninsula Borough Assessing Dept. use only and is not intended for conveyance nor is it a survey.

Note- Assessor's block Numbers Shown in Ellipses Assessor's Parcel Numbers Shown in Circles

KN2014011 PRINCESS LAKE ESTATES PHASE 3
KN2014013 PRINCESS LAKE ESTATES PHASE 4
KN2016001 PRINCESS LAKE ESTATES PHASE 5
KN2020030 PRINCESS LAKE ESTATES PHASE 7

Assessor's Map
Kenai Peninsula Borough



0 200 400 Feet

JULY 24, 2020

For 2021 assessment roll	
Delete	Add
	Revise
To	
70,78	80-91

200

260

260

080

080

12 7
13 18