

N1/2 NE1/4, SEC. 11, T05N, R09W, S.M.

063-450

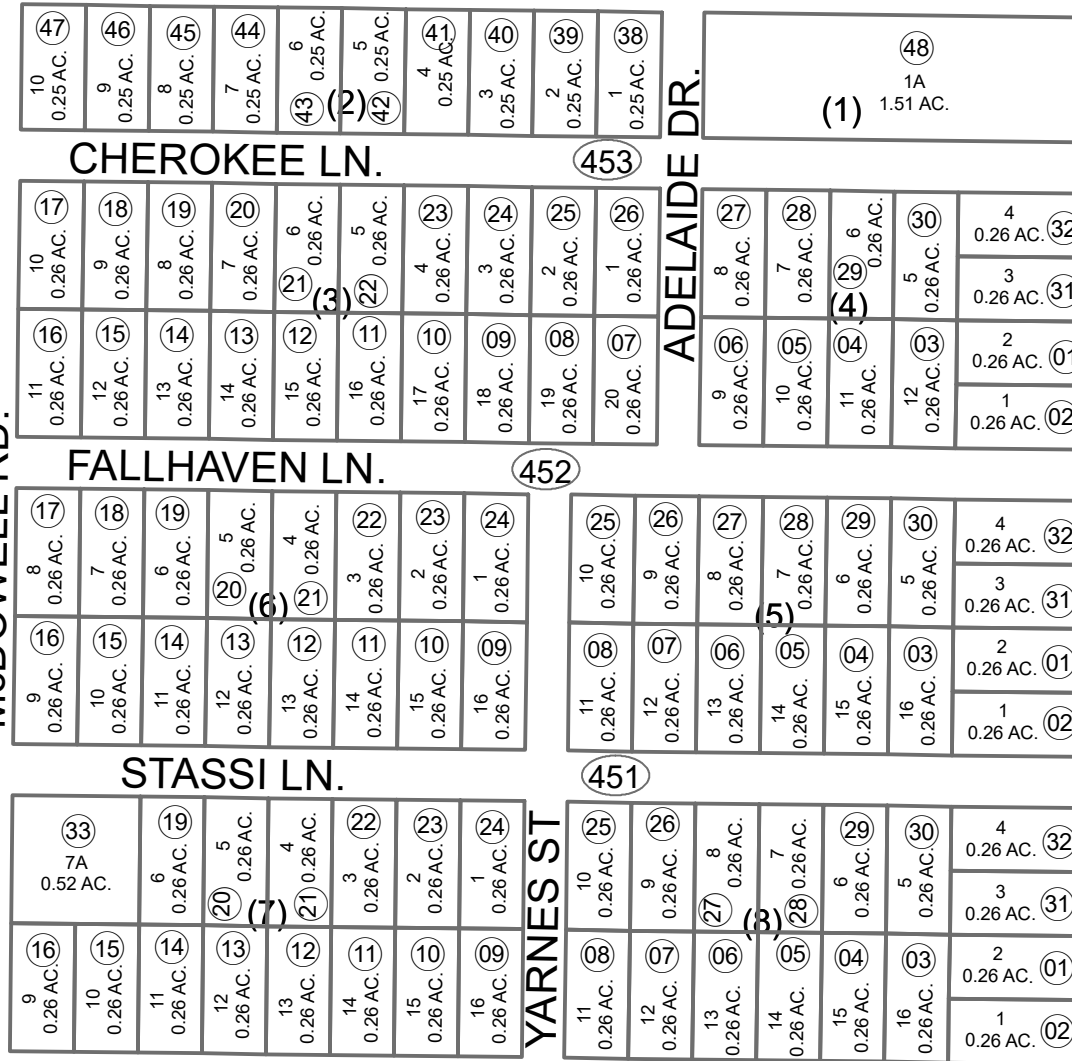
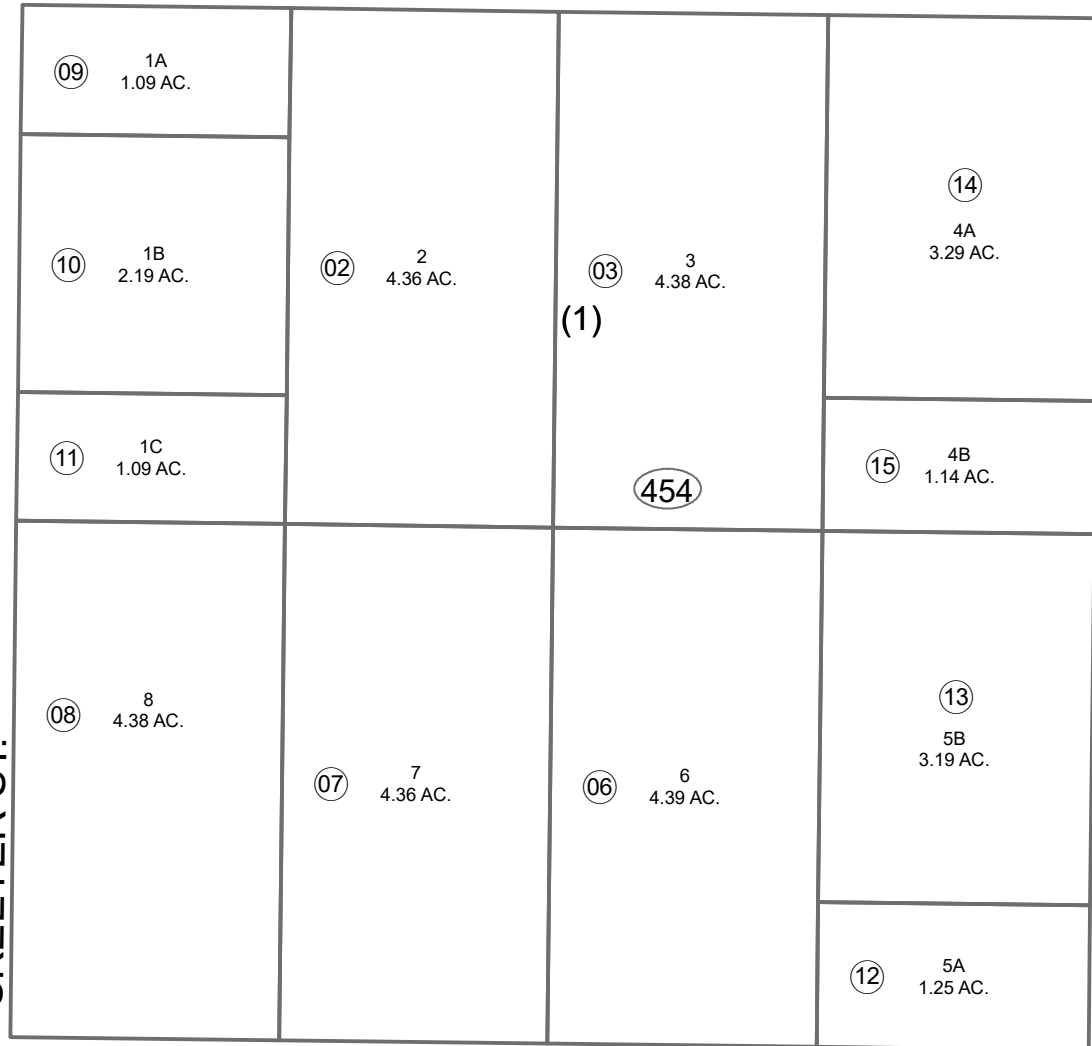
710

2

811

1

ROBINSON LOOP RD.



E LN.

11

800

SKEETER ST.

ENTRADA DR.

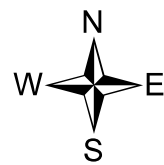
490

330

12

AUGUST 15, 2022

For 2023 assessment roll		
Delete	Add	Revise
To		
04	14,15	



0 50 100 200 Feet

Assessor's Map
Kenai Peninsula Borough

STERLING HEIGHTS SUB KN0000935
 STERLING HEIGHTS SUB ADDN NO 2 KN0760174
 STERLING HEIGHTS SUB KINCAID ADDN KN0920020
 STERLING HEIGHTS SUB SCOOTERS REPLAT KN0930087
 STERLING HEIGHTS SUB NO 2 PART 6 KN0930094
 STERLING HEIGHTS SUB 2020 ADDN KN2020059
 STERLING HEIGHTS SUB 2022 ADDN KN2022038

This map is prepared for Kenai Peninsula Borough Assessing Dept. use only and is not intended for conveyance nor is it a survey.

Note- Assessor's block Numbers Shown in Ellipses
 Assessor's Parcel Numbers Shown in Circles