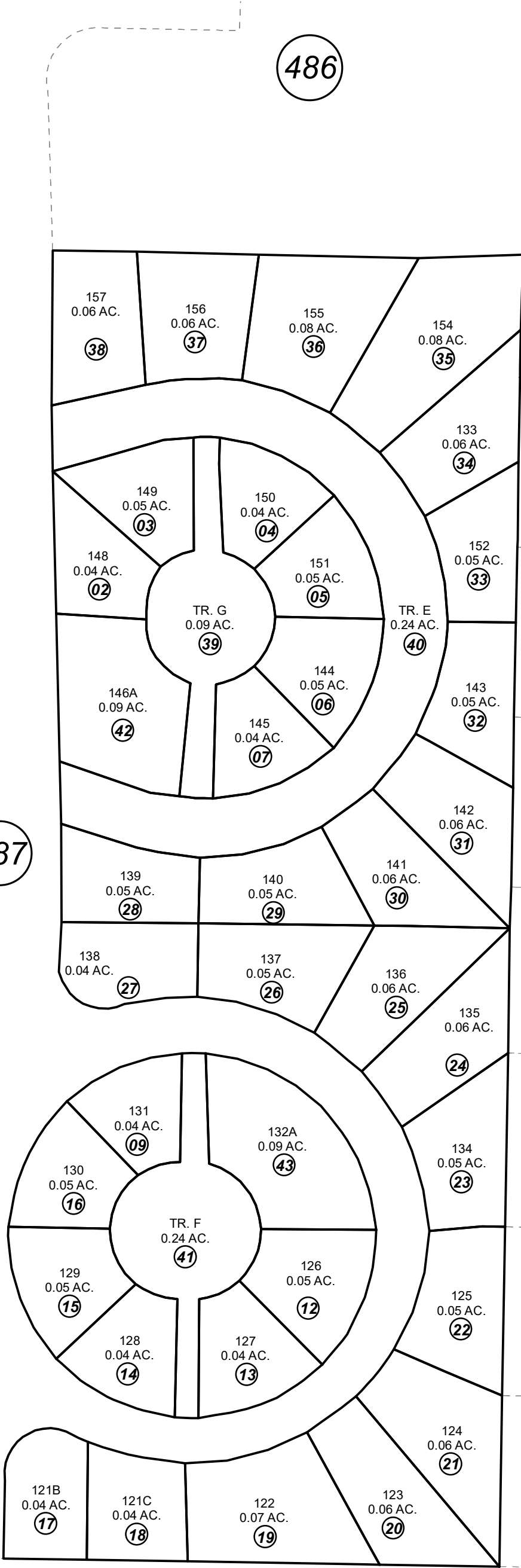


POR. SEC. 19, T05N, R10W, S.M.

057-488

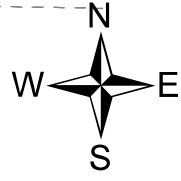


487

486

091

481



0 25 50 100 Feet

SEPTEMBER 6, 2019

For 2020 assessment roll	
Delete	Add
	Revise
To	43
10,11	

This map is prepared for Kenai Peninsula Borough Assessing Dept. use only and is not intended for conveyance nor is it a survey.

Note- Assessor's block Numbers Shown in Ellipses
Assessor's Parcel Numbers Shown in Circles

POACHER'S COVE SUB AMENDED KN0870069
POACHER'S COVE SUB DEINES REPLAT KN2017030
POACHER'S COVE SUB JOHN HENRY REPLAT KN2019033

Assessor's Map
Kenai Peninsula Borough