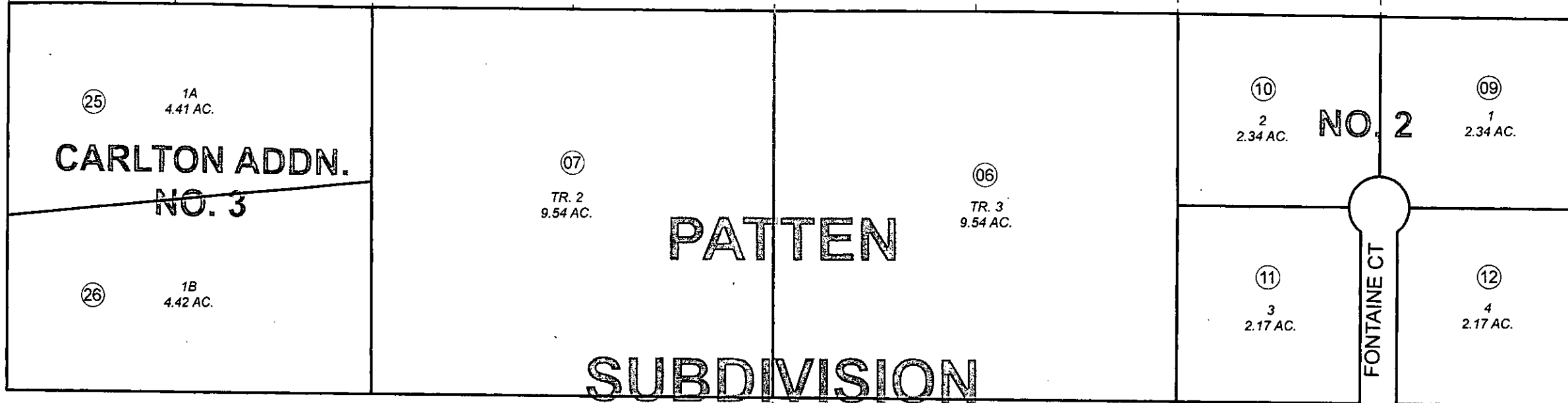


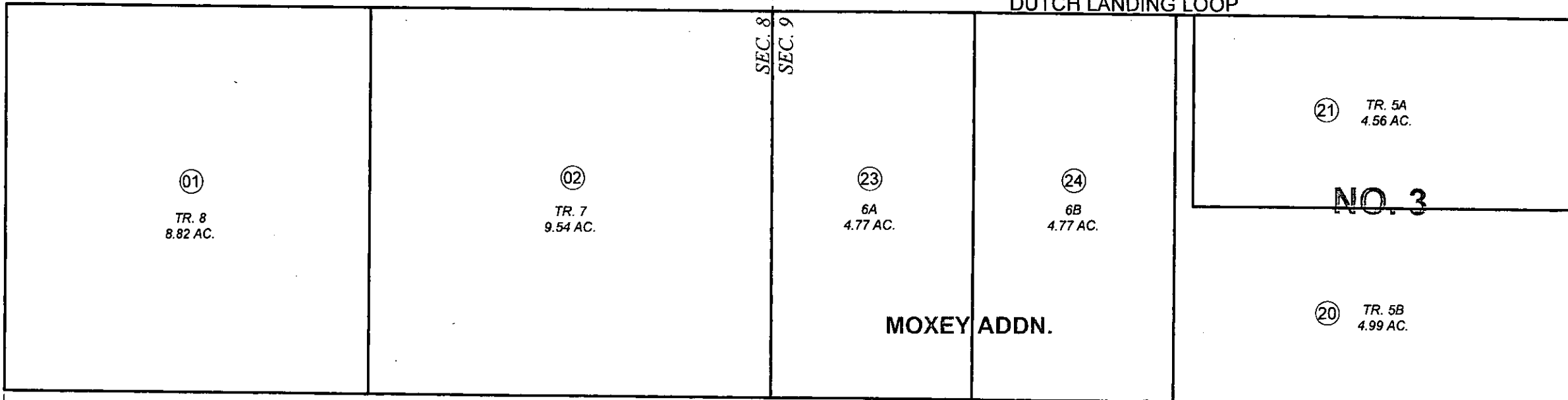
POR. SEC. 8 & 9, T05N, R09W

063-350

030



# PATTEN SUBDIVISION



# GERBER SUBDIVISION 012

020

JANUARY 3, 2012

For 2012 assessment roll		
Delete	Add	Revise
	To	
22	25,26	



0 50 100 200 Feet

Assessor's Map  
Kenai Peninsula Borough

PATTEN SUB KN0740067  
 PATTEN SUB NO 2 KN0840156  
 PATTEN SUB NO 3 KN0870112  
 PATTEN SUB REPLAT CARLTON ADDN KN0880018  
 PATTEN SUB CARLTON ADDN NO 3 KN2011095

This map is prepared for Kenai Peninsula Borough Assessing Dept. use only and is not intended for conveyance nor is it a survey.

Note- Assessor's block Numbers Shown in Elipses  
 Assessor's Parcel Numbers Shown in Circles