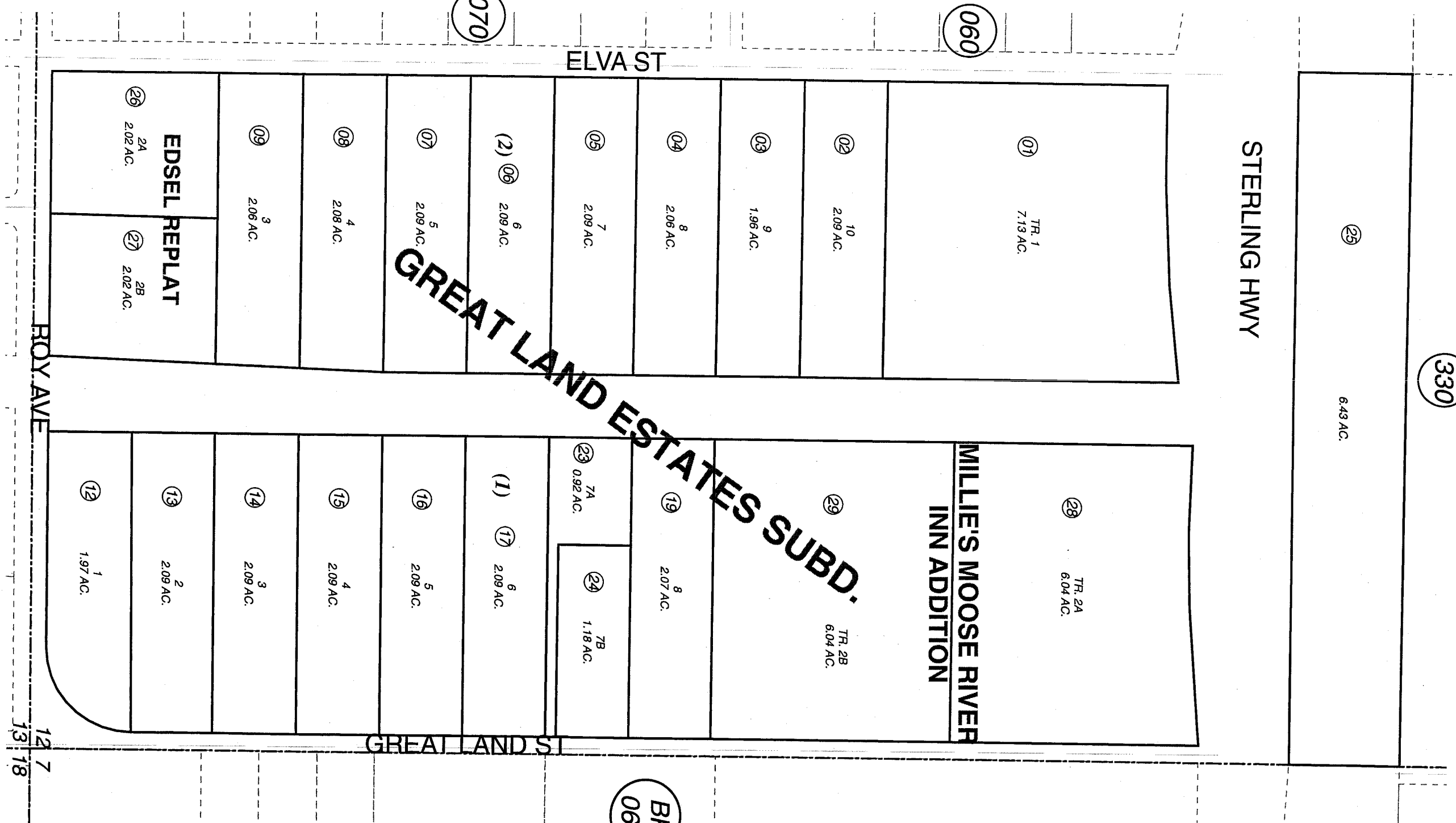


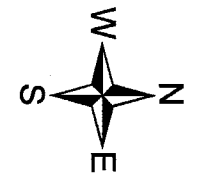
E 1/2 SE 1/4 SEC. 12, T05N, R09W, S.M.

063-530



JULY 23, 2004

For 2005 assessment roll		
Delete	Add	Revise
	To	
	28,29	



Assessor's Map
Kenai Peninsula Borough

GREAT LAND ESTATES SUB NO 2 KN0760172
 GREAT LAND ESTATES COLLINS REPLAT KN0900041
 GREAT LAND ESTATES KN2000072
 GREAT LAND ESTATES MILLIE'S MOOSE RIVER INN ADDN KN2004032

Note- Assessor's block Numbers Shown in Ellipses
 Assessor's Parcel Numbers Shown in Circles

This map is prepared for Kenai Peninsula Borough Assessing Dept. use only and is not intended for conveyance nor is it a survey.