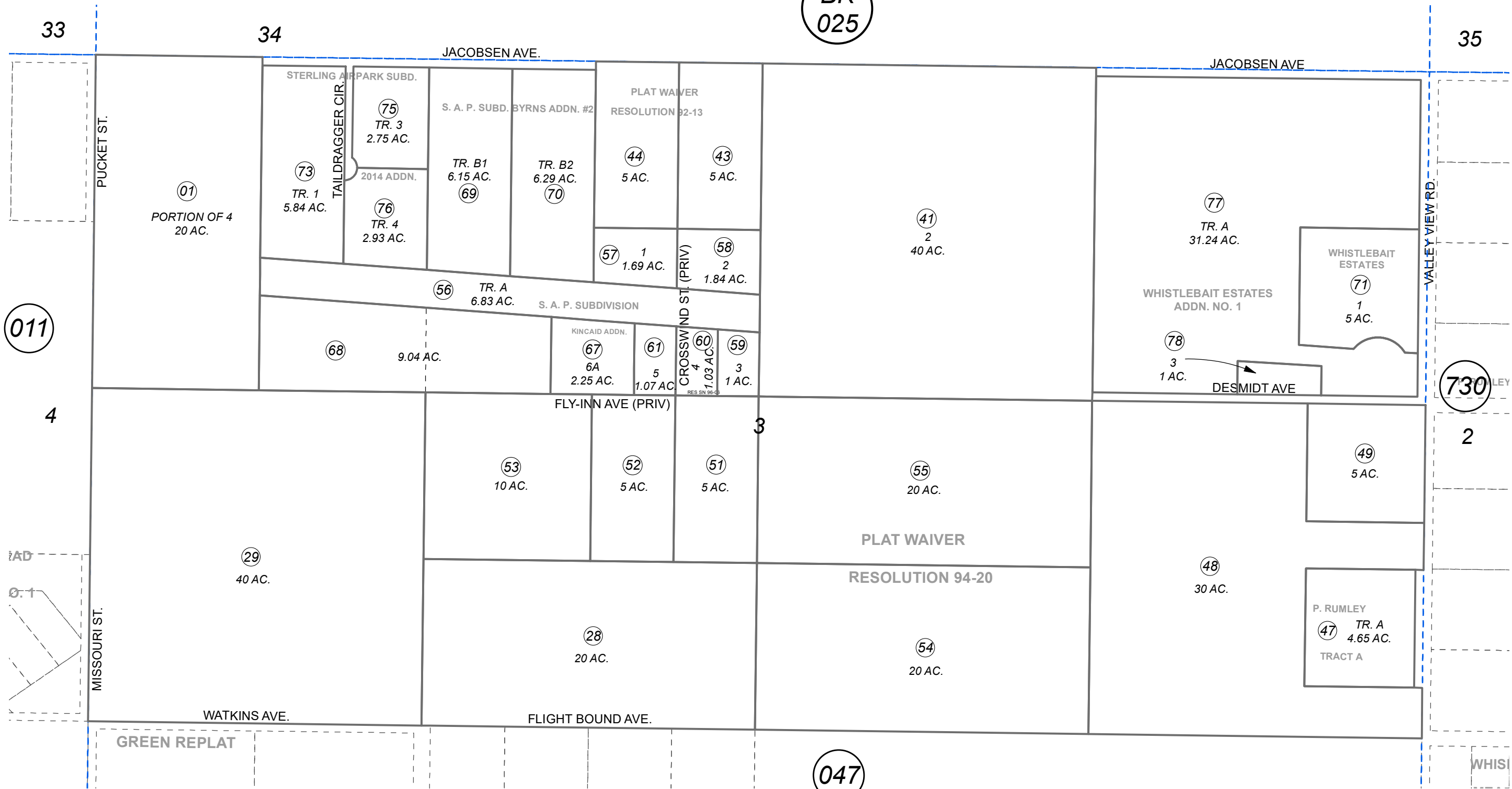


N1/2 SEC. 3, T05N, R09W, S.M.

BK  
025

063-043



011

047

730



0 200 400 Feet

FEBRUARY 1, 2022

For 2022 assessment roll		
Delete	Add	Revise
To		
72	77,78	

Assessor's Map  
Kenai Peninsula Borough

- P RUMLEY TRACT □ KN0840134
- S A P SUB □ KN0950043
- S A P SUB BYRNS ADDN □ KN0960034
- S A P SUB KINCAID ADDN □ KN0980009
- S A P SUB BYRNS ADDN #2 □ KN2006026
- WHISTLEBAIT ESTATES KN2011045
- STERLING AIRPARK SUB KN2013120
- STERLING AIRPARK SUB 2014 ADDN KN0214084
- WHISTLEBAIT ESTATES ADDN NO 1 KN2021005

Note- Assessor's block Numbers Shown in Ellipses  
Assessor's Parcel Numbers Shown in Circles

This map is prepared  
for Kenai Peninsula  
Borough Assessing Dept.  
use only and is not  
intended for conveyance  
nor is it a survey.