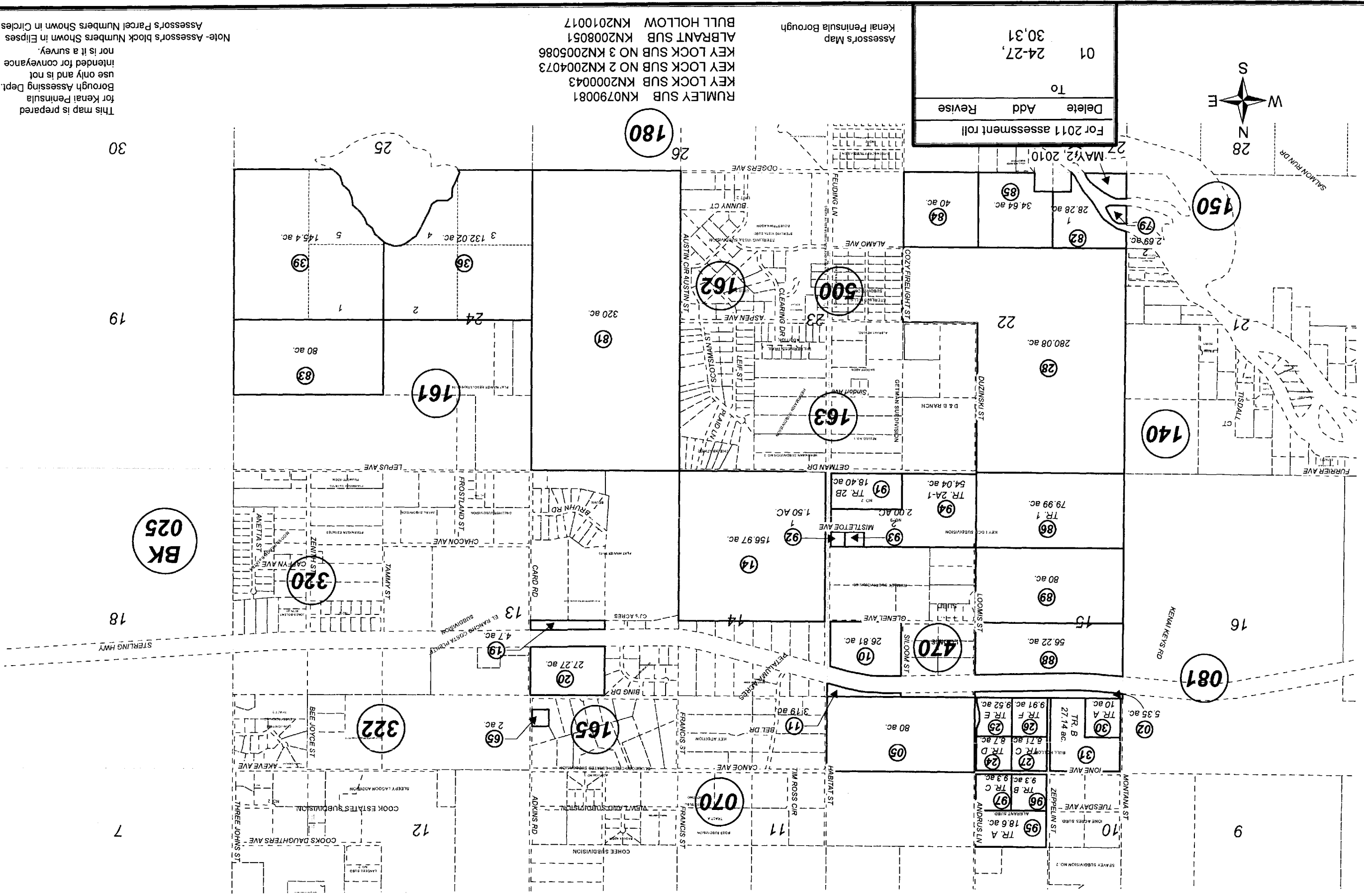


SEC. 13-15 & 22-24, T05N, R08W, S.M.

065-160



Delete		Add		Revise	
For 2011 assessment roll					
MAY 2, 2010					
01	24-27,	30,31			

Assessor's Map  
 Kenai Peninsula Borough  
 RUMLEY SUB KN0790081  
 KEY LOCK SUB NO 2 KN2004073  
 KEY LOCK SUB NO 3 KN2005086  
 ALBRANT SUB KN2008051  
 BULL HOLLOW KN2010017

This map is prepared for Kenai Peninsula Borough Assessing Dept. use only and is not intended for conveyance nor is it a survey.  
 Note- Assessor's block Numbers Shown in Ellipses  
 Assessor's Parcel Numbers Shown in Circles