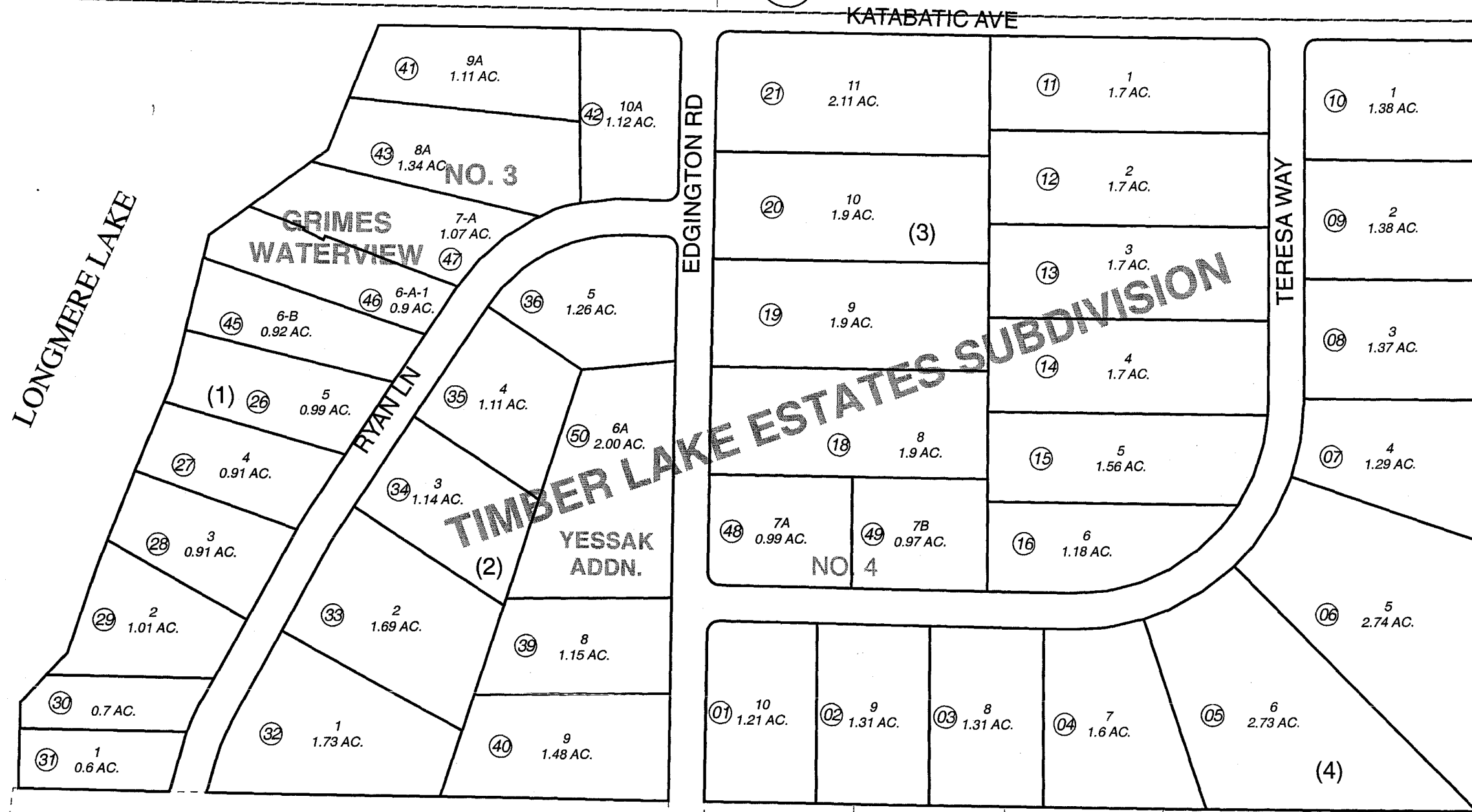


511

SEC. 20
SEC. 29



180

LONGMERE LAKE

KATABATIC AVE

EDGINGTON RD

TERESA WAY

NOVEMBER 6, 2006

For 2007 assessment roll		
Delete	Add	Revise
	To	
37,38	50	



Assessor's Map
Kenai Peninsula Borough

TIMBER LAKE ESTATES SUB KN0760164
 TIMBER LAKE ESTATES RESUB OF LOTS 8 & 9 KN0770083
 GRIMES WATERVIEW SUB AMENDED KN0830064
 TIMBER LAKE ESTATES NO 3 KN0840316
 TIMBER LAKE ESTATES SUB NO 4 KN2005067
 TIMBER LAKE ESTATES SUB YESAK ADDN KN2006085

This map is prepared for Kenai Peninsula Borough Assessing Dept. use only and is not intended for conveyance nor is it a survey.

Note- Assessor's block Numbers Shown in Elipses
Assessor's Parcel Numbers Shown in Circles

320

NO. 3