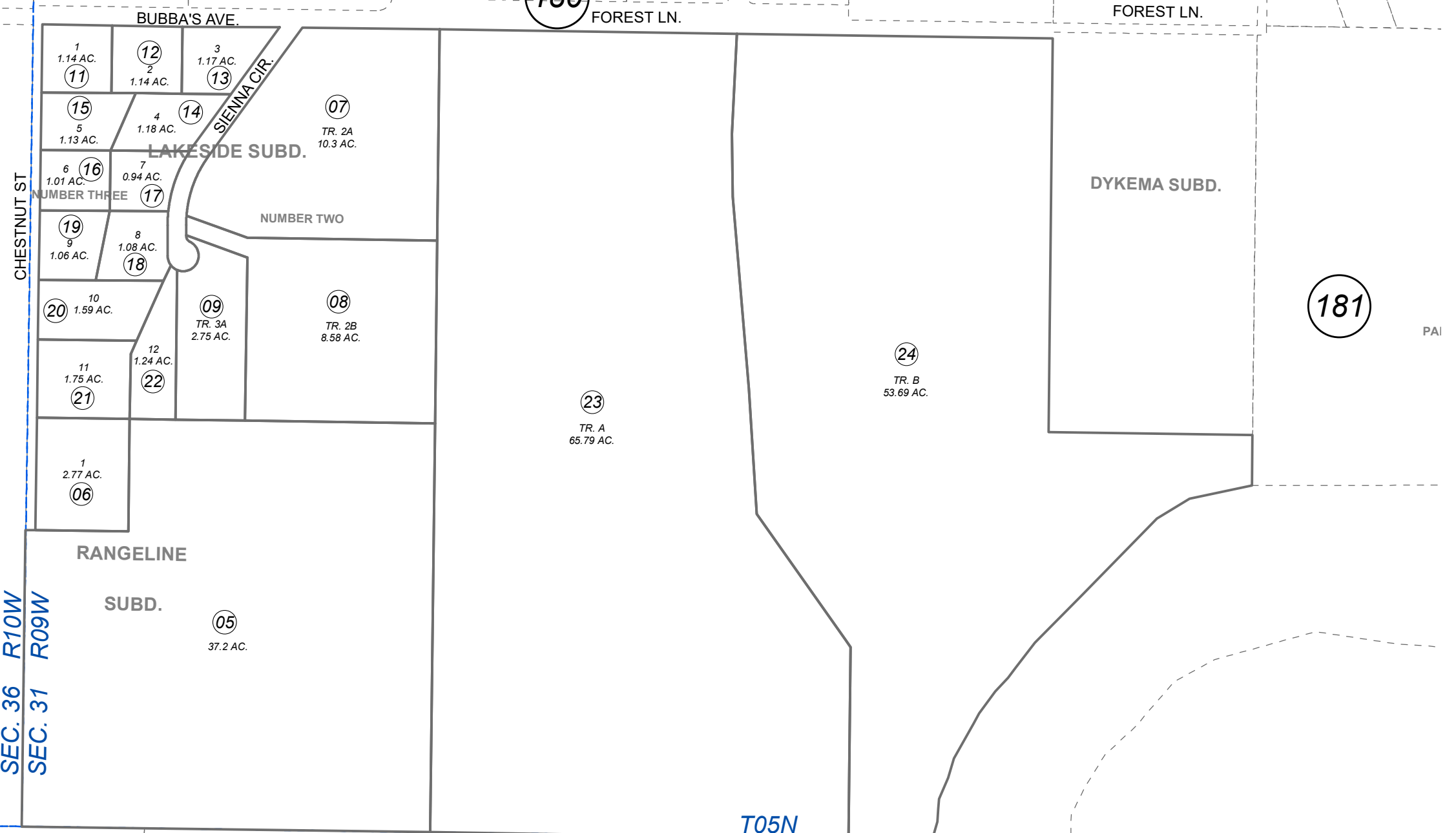


GOV'T. LOTS 4&5 & E1/2 SW1/4 SEC. 31, T05N, R09W, S.M.

063-850

180

PART THREE



BK 057

181

BK 135

JANUARY 17, 2023

For 2022 assessment roll		
Delete	Add	Revise
To		
04	23,24	



0 200 400 Feet

Assessor's Map
Kenai Peninsula Borough

RANGELINE SUB □ KN0830202
 LAKESIDE SUB □ KN0830224
 LAKESIDE SUB NO TWO □ KN0960058
 LAKESIDE SUB NO THREE □ KN2004040
 RIGHT OF WAY ACQUISITION PLAT FOREST LANE KN2014036
 CRANE-FRANCE SUB KN2022083

This map is prepared for Kenai Peninsula Borough Assessing Dept. use only and is not intended for conveyance nor is it a survey.
 Note- Assessor's block Numbers Shown in Elipses
 Assessor's Parcel Numbers Shown in Circles