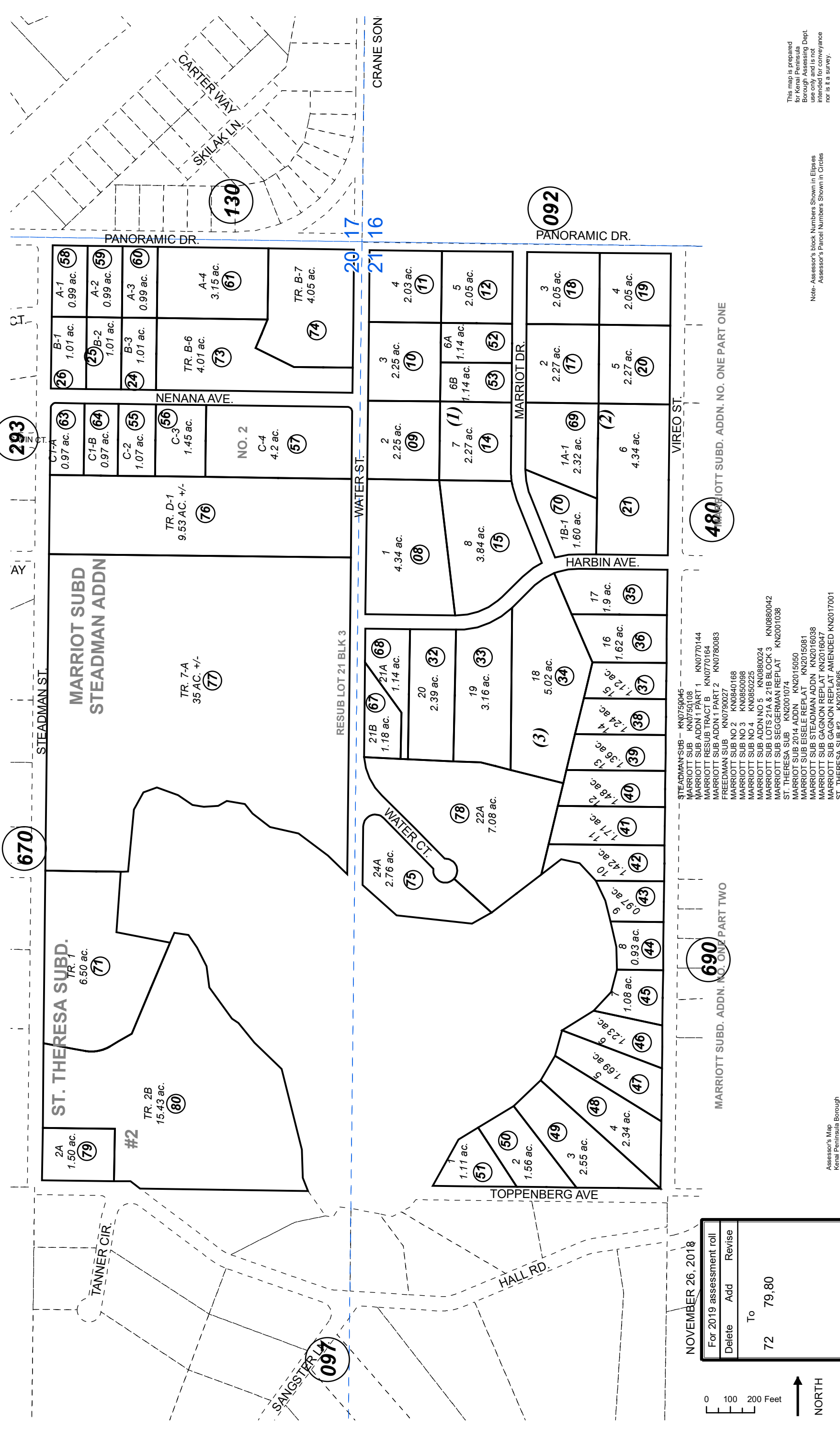


POR. SEC. 20 & SEC. 21, T05N, R09W, S.M.

063-580



293

670

097

17  
16

092

690

480

NOVEMBER 26, 2018

For 2019 assessment roll	
Delete	Revise
To	79.80
72	



- STEADMAN SUB - KN0759045
- MARRIOTT SUB ADDN 1 PART 1 - KN0770144
- MARRIOTT SUB ADDN 1 PART 2 - KN0770164
- MARRIOTT RESUB TRACT B - KN0780083
- FREEDMAN SUB - KN0790027
- MARRIOTT SUB NO 2 - KN0840168
- MARRIOTT SUB NO 3 - KN0850098
- MARRIOTT SUB NO 4 - KN0850225
- MARRIOTT SUB ADDN NO 5 - KN0880024
- MARRIOTT SUB LOTS 21A & 21B BLOCK 3 - KN0880042
- MARRIOTT SUB SEGGEMAN REPLAT - KN2001038
- ST. THERESA SUB - KN2001074
- MARRIOTT SUB 2014 ADDN - KN2015050
- MARRIOTT SUB EISELE REPLAT - KN2015081
- MARRIOTT SUB STEADMAN ADDN - KN2016038
- MARRIOTT SUB GAGNON REPLAT - KN2016047
- MARRIOTT SUB GAGNON REPLAT AMENDED - KN2017001
- ST. THERESA SUB #2 - KN2018065

MARRIOTT SUBD. ADDN. NO. ONE PART TWO

MARRIOTT SUBD. ADDN. NO. ONE PART ONE

This map is prepared for Kerala Peninsula Borough Assessing Dept. use only and is not intended for conveyance nor is it a survey.

Note: Assessor's block Numbers Shown in Ellipses Assessor's Parcel Numbers Shown in Circles

Assessor's Map  
Kerala Peninsula Borough