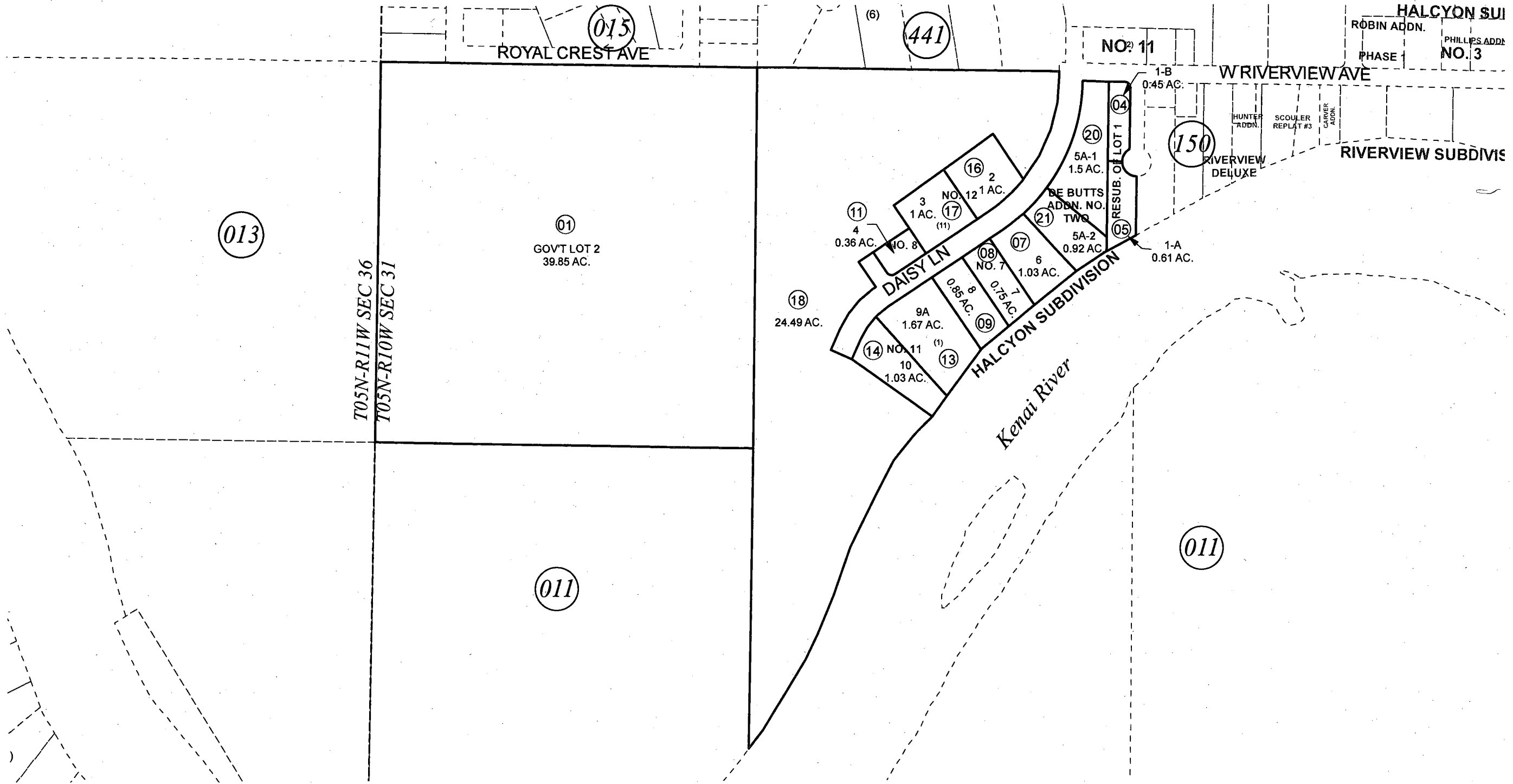


POR. S1/2 NW1/4 SEC. 31, T05N, R10W, S.M.

060-470



DECEMBER 20, 2012

For 2013 assessment roll		
Delete	Add	Revise
	To	
19	20,21	



Assessor's Map  
Kenai Peninsula Borough

- HALCYON SUB KN0730009
- HALCYON SUB RESUB OF LOT 1 BLOCK 1 KN0760075
- HALCYON SUB AMENDED PLAT OF LOT 1-B KN0780096
- HALCYON SUB NO 7 KN0790155
- HALCYON SUB NO 11 KN0920041
- HALCYON SUB NO 8 AMENDED KN0920072
- HALCYON SUB NO 12 KN0930008
- HALCYON SUB DE BUTTS ADDN KN2006077
- HALCYON SUB DE BUTTS ADDN NO TWO KN2012090

This map is prepared for Kenai Peninsula Borough Assessing Dept. use only and is not intended for conveyance nor is it a survey.  
Note- Assessor's block Numbers Shown in Ellipses  
Assessor's Parcel Numbers Shown in Circles