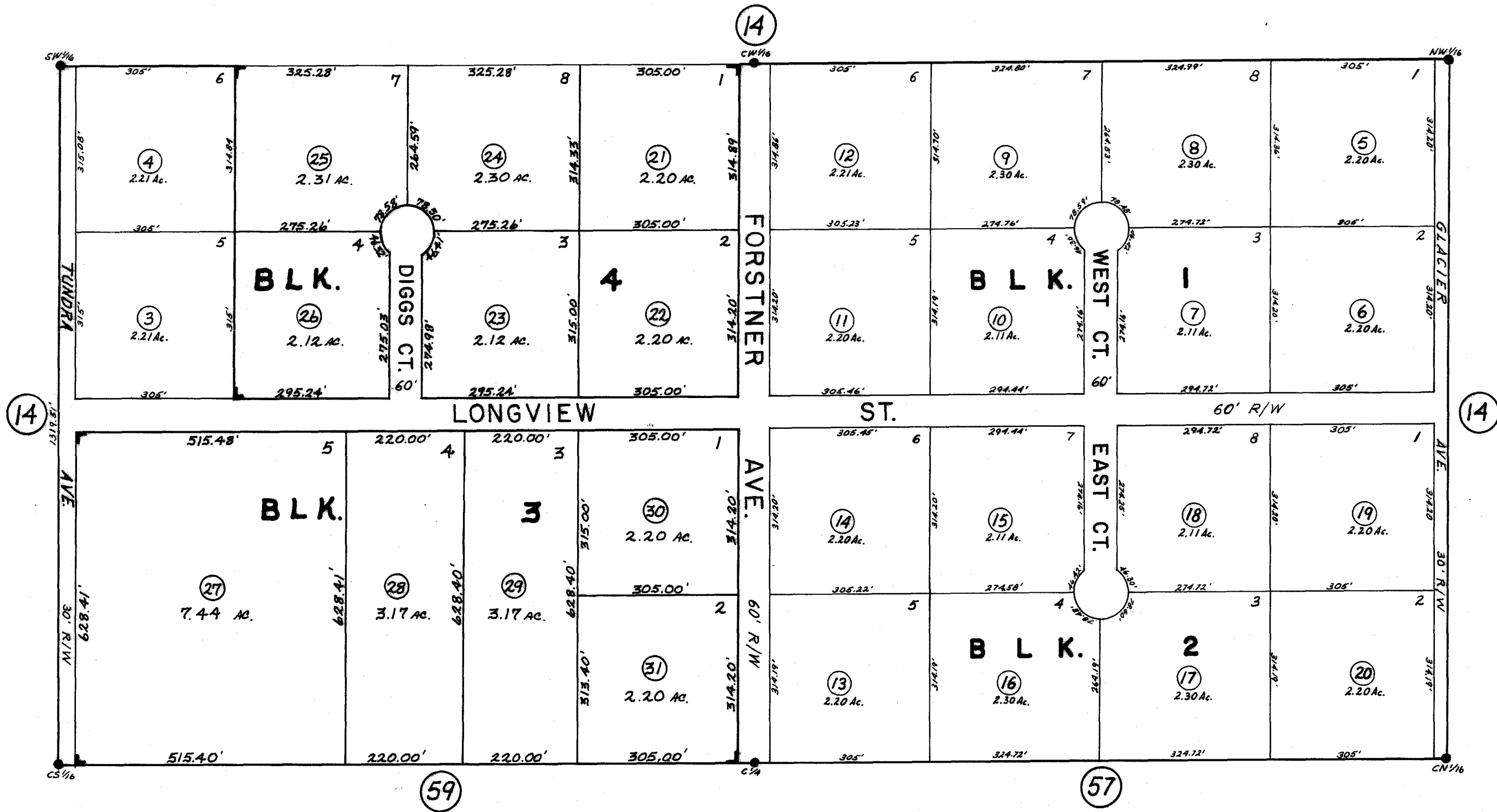


SE 1/4 NW 1/4, NE 1/4 SW 1/4, SEC. 14, T5N, R9W, S.M.

63-74



FORSTNER SUB. No. 3  
(K-81-34)

FORSTNER SUB. No. 2 K-79-149

Assessor's Map  
Kenai Peninsula Borough, Alaska

NOTE - Assessor's Block Numbers Shown in Ellipses