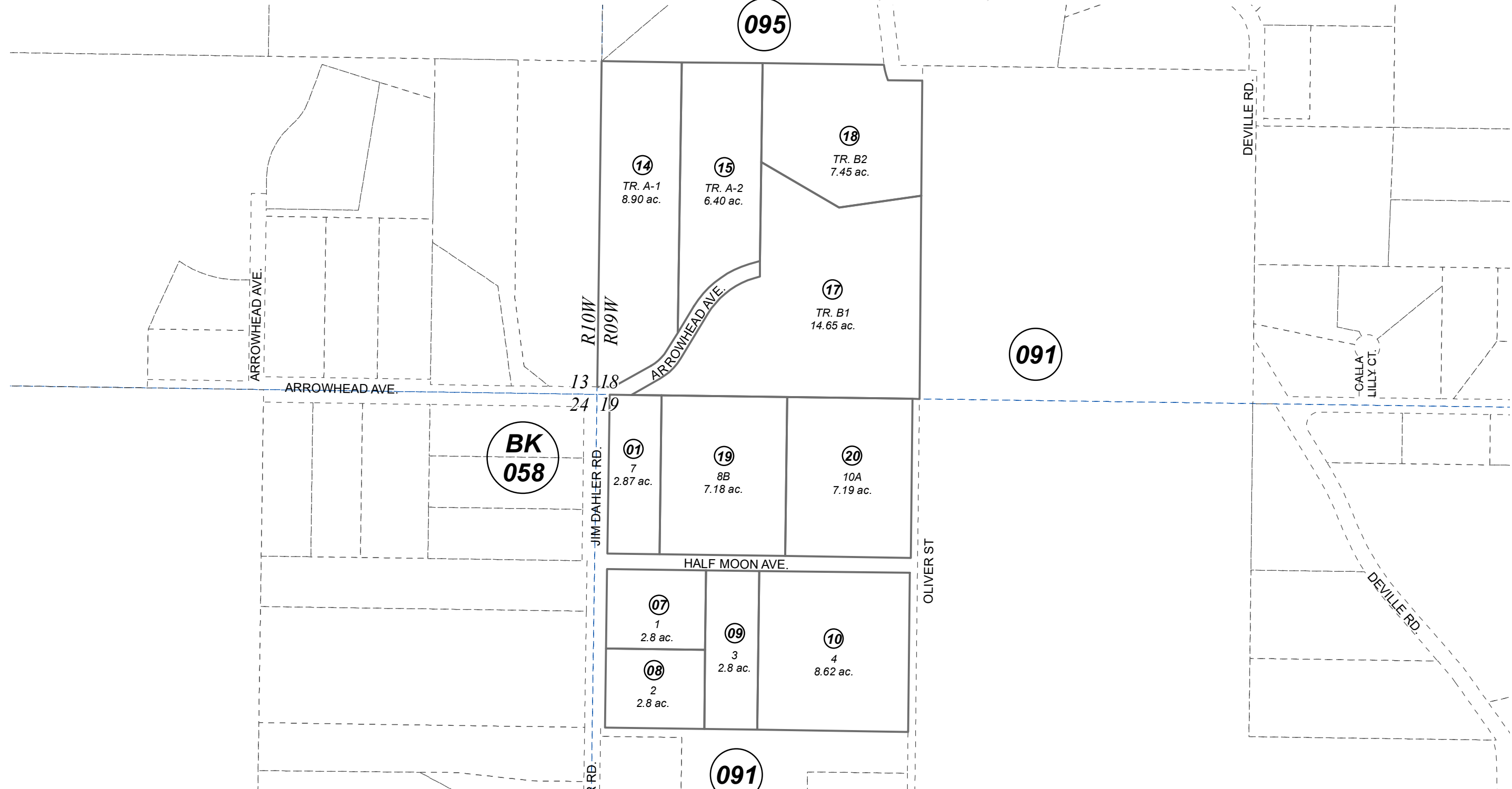


SW 1/4 SW 1/4 SEC. 18 & GOV'T. LOT 1 SEC. 19, T05N, R09W, S.M.

063-094

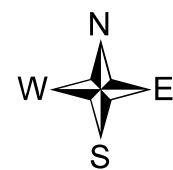


NOVEMBER 7, 2022

For 2023 assessment roll		
Delete	Add	Revise
To		
04,13, 16	19,20	

Assessor's Map  
Kenai Peninsula Borough

ARROWHEAD ESTATES PHASE 1 KN2000007  
 SUNSET HILL SUB KN2000023  
 BARKMAN SUB KN2002086  
 ARROWHEAD ESTATES DUSEK REPLAT KN2002079  
 BARKMAN SUB DUTCHER ADDN KN2004140  
 ARROWHEAD ESTATES MOORE REPLAT KN2010047  
 BARKMAN SUB 2014 ADDN KN2014063  
 ARROWHEAD ESTATES 2022 REPLAT KN2022063



0 200 400 Feet

This map is prepared for Kenai Peninsula Borough Assessing Dept. use only and is not intended for conveyance nor is it a survey.

Note- Assessor's block Numbers Shown in Ellipses  
Assessor's Parcel Numbers Shown in Circles