

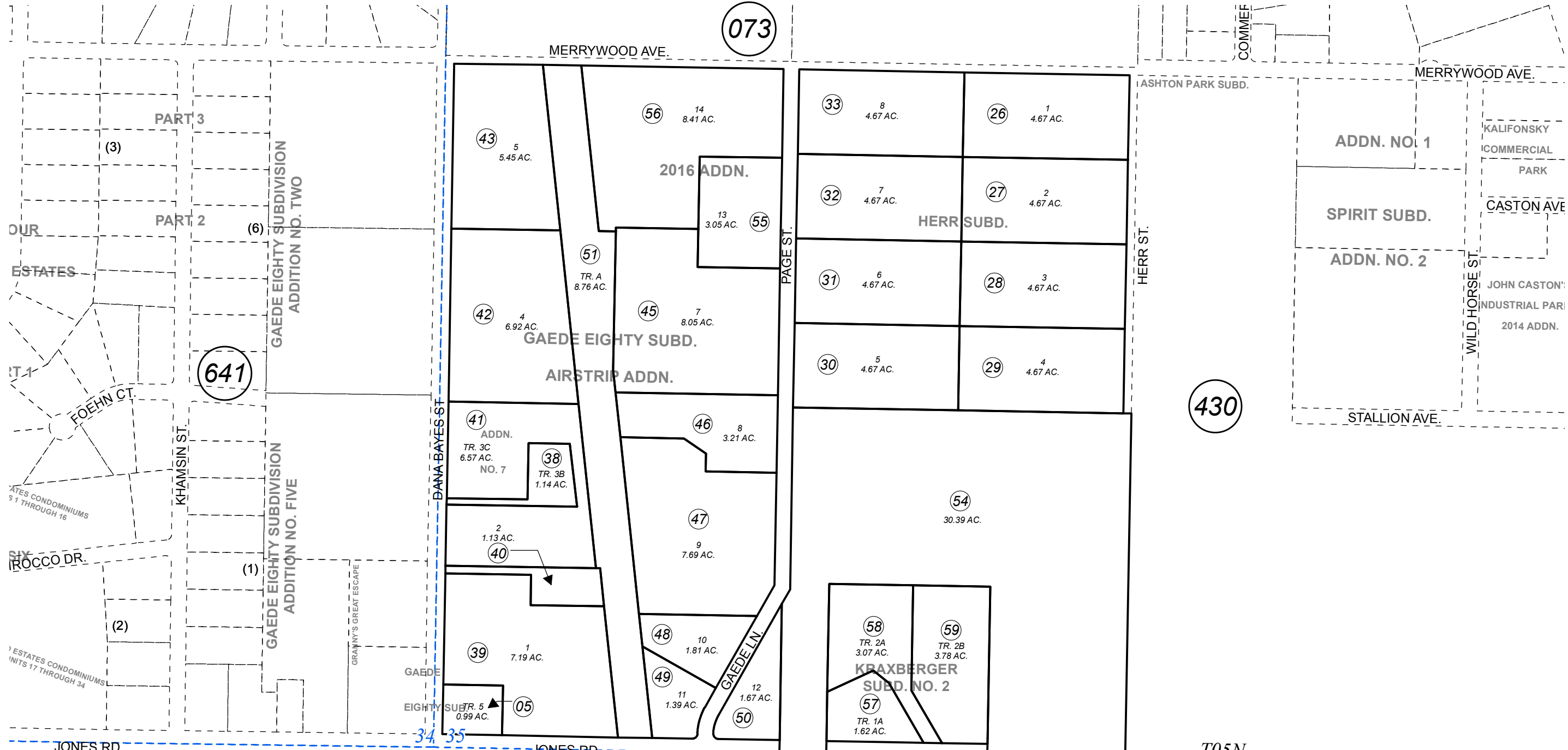
SW1/4 SEC. 35, T05N, R11W, S.M.

055-640

073

430

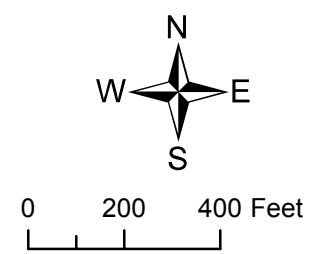
BK
131



DECEMBER 19, 2016

For 2017 assessment roll		
Delete	Add	Revise
To		
52,53	57-59	

- GAEDE EIGHTY SUB □ KN0830253
- GAEDE EIGHTY SUB ADDN NO 1 □ KN0930038
- GAEDE EIGHTY SUBD ADDN NO 2 □ KN0950070
- HERR SUB □ KN0970002
- GAEDE EIGHTY SUB ADDN NO 3 □ KN0970027
- GAEDE EIGHTY SUB ADDN NO FOUR □ KN2000059
- GAEDE EIGHTY SUB ADDN NO SIX □ KN2004078
- GAEDE EIGHTY SUB ADDN NO 7 KN2004119
- GAEDE EIGHTY SUB AIRSTRIP ADDN KN2008059
- KRAKBERGER SUB NO 1 KN2013093
- GAEDE EIGHTY SUB 2016 ADDN □ KN2016055
- KRAKBERGER SUB NO 2 KN2016074



Assessor's Map
Kenai Peninsula Borough

This map is prepared for Kenai Peninsula Borough Assessing Dept. use only and is not intended for conveyance nor is it a survey.
Note- Assessor's block Numbers Shown in Elipses
Assessor's Parcel Numbers Shown in Circles