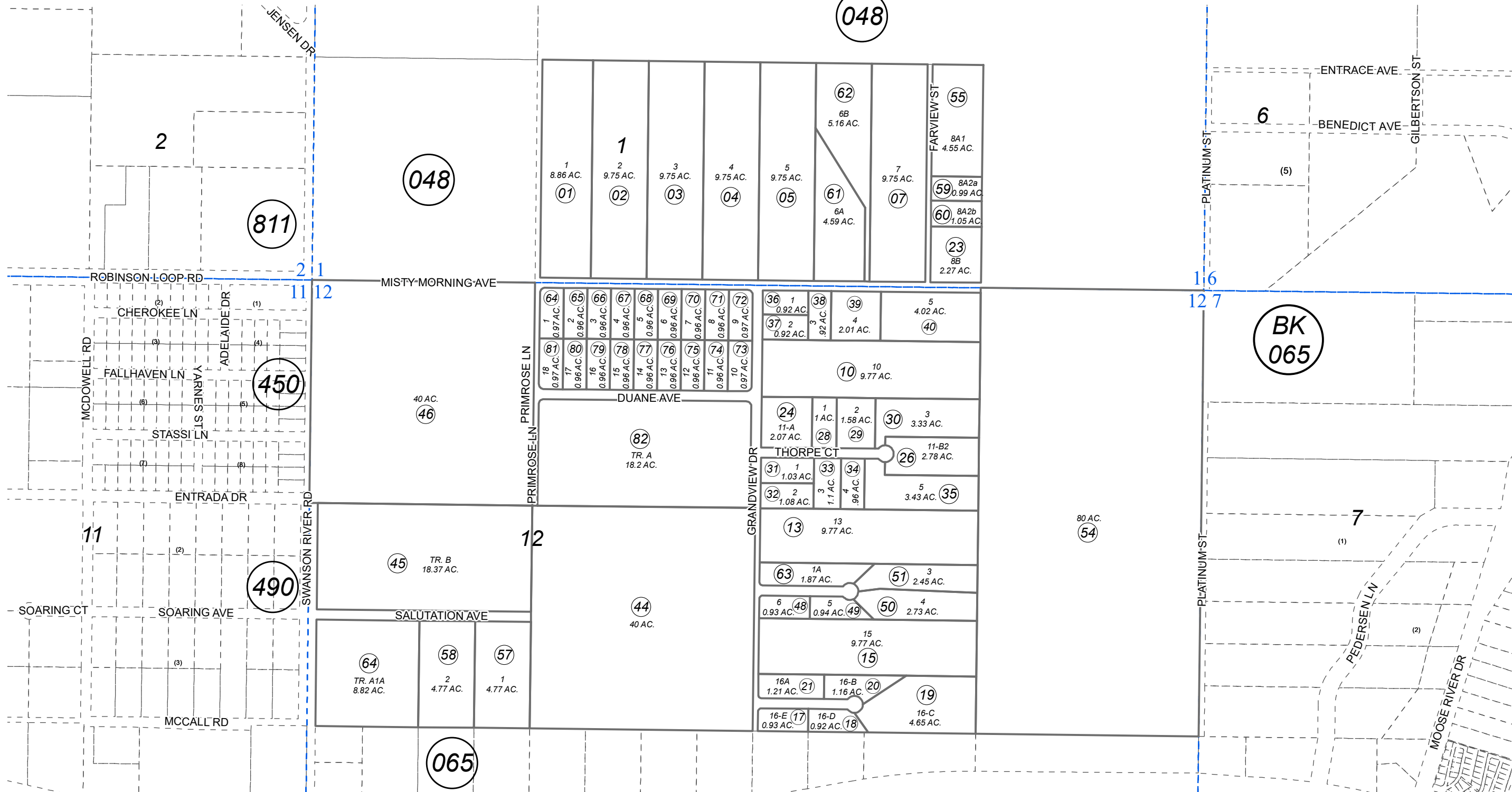


POR. SEC. 1 & 12, T05N, R09W, S.M.

063-330



AUGUST 18, 2023

For 2024 assessment roll

Delete	Add	Revise
To		
41,42	64	

GRANDVIEW SUB KN0730060  
 MCCALL SUB KN0760175  
 GRANDVIEW SUB RESUB LOT 16 KN0780144  
 GRANDVIEW SUB LOTS 8A & 8B KN0810153  
 GRANDVIEW SUB RESUB LOTS 11 & 12 KN0820035  
 GRANDVIEW SUB NO 4 KN0830094  
 GRANDVIEW SUB NO 5 KN0830217  
 GRANDVIEW SUB NO 3 AMENDED KN0830232  
 GRANDVIEW SUB NO 6 KN0840055  
 MCCALL SUB NO 2 KN0850109

MCCALL SUB NO 2 KN0850109  
 GRANDVIEW SUB WHITE 1986 SUB OF TRACT 14 KN0860162  
 GRANDVIEW SUB ADAMS ADDN KN2004114  
 MCCALL SUB NO 2 CRAVEN ADDN KN2008074  
 GRANDVIEW SUB ADAMS ADDN NO 2 KN2009021  
 GRANDVIEW SUB LARSON ADDN KN2015085  
 GRANDVIEW SUB RAMONDINO REPLAT KN2016066  
 LEVAN-STERLING SUB KN2023007  
 MCCALL SUB 2022 REPLAT KN2023036

Assessor's Map  
 Kenai Peninsula Borough

Note- Assessor's block Numbers Shown in Ellipses  
 Assessor's Parcel Numbers Shown in Circles



0 200 400 Feet